

2024 - 2025

EL DORADO

FARM TRAILS AND VISITORS GUIDE

California's First Road Trip

Rubicon Trail

Crown Jewel of All Off Highway Trails

Where To Find Fall Colors

in El Dorado County

Apple Hill™

Anytime Of Year

*Know your Farmer
Know your Food*

Maps

Wine Country

Lake Tahoe

Farm Trails



Boa Vista

PROUDLY NAMED
USA TODAY 10 BEST READERS' CHOICE
**#1 APPLE ORCHARD
IN CALIFORNIA**



OPEN 363 DAYS A YEAR 7:30AM – 6PM



boavista.com

2952 Carson Rd. Placerville, CA

(530) 622-5522



Shop 24/7 Online



WELCOME TO EL DORADO COUNTY

A diverse playground of stunning scenic beauty...

But don't take our word for it...Experience El Dorado for yourself!



PHOTO COURTESY: Menka Belgal

The El Dorado County Visitors Authority and the EDC Farm Trails Association invite you explore our bountiful back roads. You'll find a perfect blend of breathtaking scenery, rich and colorful history, exciting outdoor adventure and fun agricultural excursions year round.

FOLLOW US



@VisitElDorado



@VisitElDoradoCounty



@VisitElDoradoCounty

Visit El Dorado

El Dorado County Visitors Authority

542 Main Street
Placerville, CA 95667
530-621-5885

Visit-ElDorado.com

Visitors Authority Council Chair:
Christa Campbell
Executive Director of Tourism:
Jody Franklin



El Dorado County Farm Trails Association

P.O. Box 20
Placerville CA 95667
530-303-2285
edc-farmtrails.org
facebook.com/farmtrails

President: Mike Owen

Vice President:
Dan Hannig

Secretary: Gordon Helm

Treasurer: Jane Harris

Guide Committee:
Jane Harris, Seana Hartsell,
Mike Owen

A picture is worth a thousand words. Thanks to the following photographers we are better able to share the El Dorado Experience:

Cover Photo: Lynda Cortright

Paul Cockrell, First Track Productions, Apple Hill Growers™, Menka Belgal, @followtheshaddoe, Jody Franklin, @gojiragir13, Jane Harris, Jenn Gleckman, Mountain Democrat, Jill E. Nauman, Tricia V Photography, Dominic Payerchin, Visit El Dorado, @whereishanne, Golden State Family Adventures, @matthewpwalters, Tahoe Outdoor Adventures, @DMAC_photo, Mike Battey, John Flinn, El Dorado Winery Association, Betty Sederquist

Published by: **Mountain Democrat**
For advertising information call (530) 344-5048

Share your adventures...
#ElDoradoCounty
#Placerville

TABLE OF CONTENTS

El Dorado County Transportation Info 7
 California's First Road Trip 10-11
 Upcoming Events in El Dorado County..... 12-13
 Where the California Gold Rush Began16
 Fairplay Wineries 17-19
 2 Historic Towns – Placerville/Georgetown20
 Things To Do for the Young and the Young at Heart..... 22-23
 Lake Tahoe 24
 Where to Play on a Snow Day 26
 El Dorado National Forest & Desolation Wilderness 27
 El Dorado Trails28
 Gone Fishing..... 30
 Rubicon Trail31
 4 Unique Adventures on the road to Lake Tahoe 32-33
 Apple Hill™ Farms 54
 Where to find Fall Colors..... 55
 Where to Gold Pan in El Dorado County..... 56

Farmer's Market 49
 Quilt Trail Project 49
 Know Your Farmer, Know Your Food..... 50
 You Pick Family Adventures 51
 El Dorado Ale Trail 53
 El Dorado Stay and Play Shuttle..... 58
 Weddings in El Dorado County..... 58-59
 Wine Country..... 60

MAPS

El Dorado County Map..... 36-37
 Lake Tahoe Map 25
 Camino Map 38
 Placerville Map 38
 Fair Play Map 38
 East El Dorado County 40
 North/West El Dorado County 42
 South El Dorado County..... 44
 Wine Map..... 61

DIRECTORIES

Products & Activities..... 46-47
 Harvest Calendar 48
 Wine Directory..... 62-64
 Lodging Directory..... 66-69

EL DORADO COUNTY FARM TRAILS

East El Dorado County 40-41
 North/West El Dorado County 42-43
 El Dorado Hills – Georgetown
 South El Dorado County..... 44-45
 The Goals El Dorado County Farm Trails..... 48

Placerville's Gold Bug Park & Mine

Take A Walk Into Gold Rush History!

- ★ Explore a REAL underground GOLD MINE!
- ★ Strike it rich at our gem panning troughs
- ★ Tour the free Mining Museum and Historic Stamp Mill
- ★ Check out the working Blacksmith Shop
- ★ Shop for a unique memento in Hattie's Gift Shop
- ★ Enjoy our miles of dog friendly hiking trails
- ★ Have a fun family picnic under our covered pavilion
- ★ There's plenty of free parking




Only 1 mile from downtown Placerville
 Open year round. Hours of operation may vary.

Visit www.goldbugpark.org
 for current visitors information

2635 Gold Bug Lane, Placerville • 530-642-5207

Stop by on your way to Apple Hill, our local wineries and Lake Tahoe




*Listed on the National Register of Historic Places
 and as a California State Point of Historic Interest*

*Placerville Democrat
 Readers' Choice
 FOR BEST LOCAL ATTRACTION
 12 Weeks In A Row!*

It's a **GREAT DAY** in El Dorado County

Come live your **BEST LIFE** in the Foothills!



Sally Long Johns
Realtor
DRE#01308662

Starry nights, no city lights...area you are dreaming of living a country lifestyle with access to the nature and modern amenities?

Call Realtor, Sally Long Johns for guidance on
Selling Acreage • Homes • Commercial Referrals • Estate
• Equestrian • Probate • Divorce • Short Sales
or buying to Build

(530) 306-0821

SallyLongJohns@yahoo.com





SHOP, DINE, AND THRIVE

Placerville's hub for Beauty, Wellness, and More!

RESTAURANTS	SERVICES	RETAIL
 1234 Broadway Unit A (530) 625-2900	 <i>fit • convenient • affordable</i> 1246 Broadway (530) 621-2777	 1200 Broadway (530) 625-0801
LONDON BEST FISH & CHIPS 1215-C Broadway (530) 642-0777	 UMPQUA 1234-A Broadway (530) 626-1500	SOLE DESIRE shoes 1201-B Broadway (530) 344-6600
 1224-D Broadway • (530) 300-3008	 1234-G Broadway (530) 629-1774	 <i>in the pig up toy shop</i> A COUNTRY FARM MARKET STORE 1200-E Broadway
 1228 Broadway (530) 626-8024	 NORCAL WATER SYSTEMS 1224-G Broadway (530) 621-4800	 FARMERS INSURANCE 1234 Broadway Suite F 844-665-5678
 1200 Broadway (530) 626-1910	 FITZPATRICK PHYSICAL THERAPY 1252-B Broadway (530) 622-9410	 
 SHORTY'S GELATO 530-313-8852 1216 Broadway Unit A	 WELLS FARGO 1244 Broadway (530) 622-9200	

www.hangtownvillagesquare.com

1200-1252 Broadway Placerville

TRANSPORTATION IN EL DORADO COUNTY

Airport

Placerville Airport – (530) 622-0459
Georgetown Airport – (530) 622-0459
Cameron Park Airport – (530) 676-8316
Lake Tahoe Airport – (530) 542-6182

Taxi, Limousine & Shuttle Service

El Dorado Taxi – (530) 647-6767
Hangtown Taxi – (530) 748-TAXI (8294)
Coloma Shuttle – (530) 303-2404

Rental Cars

Enterprise Rent-A-Car, Placerville – (530) 621-0866
Enterprise Rent-A-Car, Shingle Springs –
(530) 672-8424
Enterprise Rent-A-Car, El Dorado Hills –
(916) 934-0783
Dave's Rent-A-Car, Cameron Park – (530) 676-9658
Hertz Rent A Car, Shingle Springs – (530) 676-1601

Public Transportation

El Dorado Transit – www.eldoradotransit.com
(530) 642-5383 / (888) 246-2877

LOCAL BUS ROUTES

Routes connecting the communities of Pollock Pines, Camino, Placerville, El Dorado, Diamond Springs, Cameron Park, Shingle Springs and Grizzly Flat.
(\$1.50 one way/\$6 day)

COMMUTER SERVICE

Commuter routes run Monday through Friday from El Dorado County into downtown Sacramento corridor.
(\$5 one way)

Amtrak Train & Connecting Bus Service

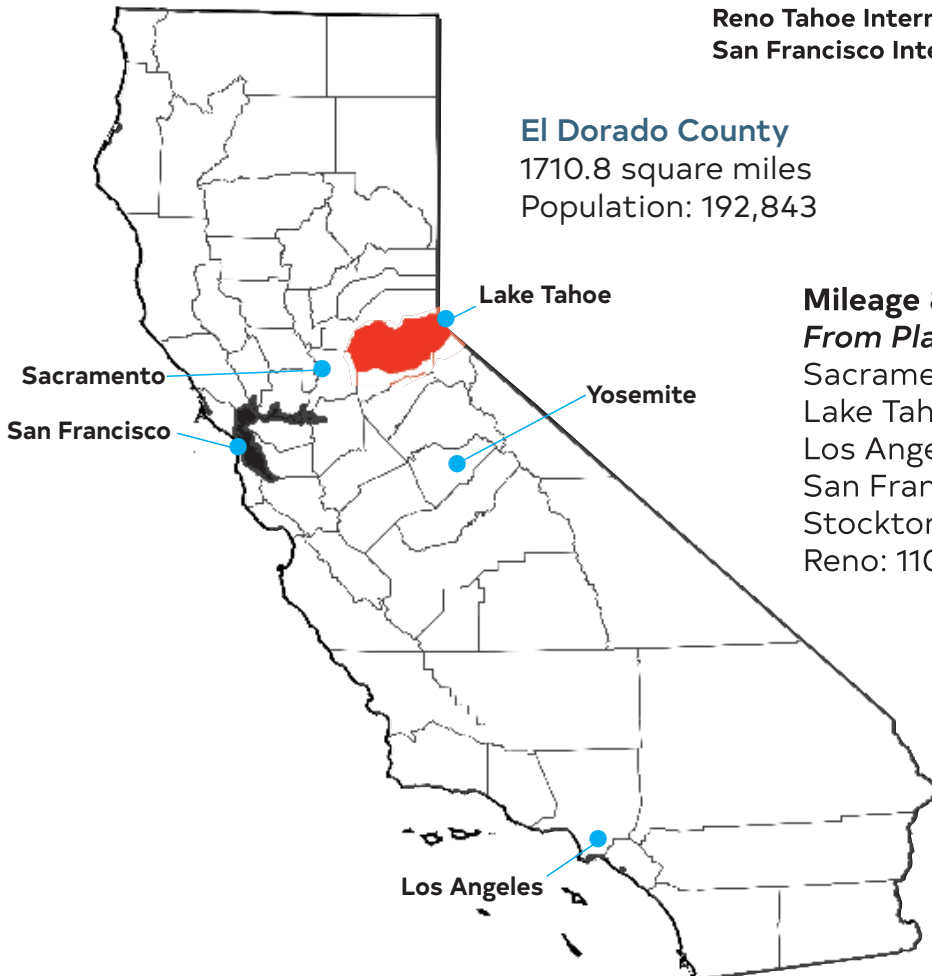
www.amtrakcalifornia.com (800) 872-7245

El Dorado Transit offers one daily motor coach round trip from the Amtrak Train Station in Sacramento to South Lake Tahoe making stops in Cameron Park, Placerville, South Lake Tahoe Wye and the Stateline Transit Center.
<https://eldoradotransit.com/sacramento-south-lake-tahoe-connecting-bus/>



Nearest International Airports

Sacramento International Airport (SMF) – 50 Miles
Reno Tahoe International Airport (RNO) – 115 miles
San Francisco International Airport (SFO) – 130 miles



Mileage & Drive Times From Placerville

Sacramento: 45 miles / 45 minutes
Lake Tahoe: 60 miles / 70 minutes
Los Angeles: 450 miles / 8 hours
San Francisco: 146 miles / 2.5 hours
Stockton: 69 miles / 75 minutes
Reno: 110 miles / 2.5 hours

Climate

Average Summer Temperature
75 – 95 degrees F
Average Winter Temperature
30 – 50 degrees F
Annual Rainfall: 39.50 inches



APPLE RIDGE FARMS

530-647-0613 • 1800 LARSEN DRIVE, CAMINO

OPEN DAILY!

AUG. 24 THRU DEC. 1

(CLOSED THANKSGIVING DAY)

BUS AND RV PARKING AVAILABLE

20

APPLERIDGEFARMS.COM

BAKERY

MADE FROM SCRATCH DAILY

FRESH BAKED PIES + STRUDELS
 CARAMEL APPLES + TURNOVERS
 APPLE CIDER DONUTS + FRUIT BLOSSOMS
 APPLE DUMPLINGS W/CARAMEL SAUCE
 CINNAMON ROLLS + CRUMB CAKES & MORE



FLOWER & BUTTERFLY TRAIL



SEPTEMBER IS THE PERFECT TIME TO VISIT OUR NEW FLOWER TRAIL. THOUSANDS OF FLOWERS WILL BE IN FULL BLOOM FOR THAT PERFECT PHOTO. DON'T FORGET TO TAKE A PICTURE WITH OUR GIANT BUTTERFLY WINGS.

ATTRACTIONS

KIDS MAZE WITH PHOTO OPS* OPEN DAILY
 NATURE TRAIL (WEAR YOUR WALKING SHOES)
 COVERED SEATING + PICNIC AREA
 PHOTO OPS THROUGHOUT THE FARM
PUMPKIN PATCH
 OPENING SATURDAY, SEPTEMBER 28TH
ARTISAN CRAFTERS
 VISIT OUR WEBSITE FOR SCHEDULE



APPLE RIDGE BBQ

RIBEYE STEAK SANDWICH
 SMOKED PULLED PORK SANDWICHES
 GOURMET SAUSAGE SANDWICH WITH ONIONS/PEPPERS + ALL BEEF HOT DOGS
 HAMBURGERS + VEGGIE BURGERS
 GRILLED CHICKEN SANDWICHES
 HOMEMADE CHILI + SALADS
 FRENCH FRIES + KIDS MEALS



FULL MENU DAILY

COUNTRY STORE & FUDGE SHOP

HOMEMADE JAMS + FIVE PEPPER JELLY
 APPLE BUTTER + PUMPKIN BUTTER
 FRESH MADE FUDGE AND CHOCOLATES
 FRESH POPPED KETTLE CORN
 FROZEN PIES AND PASTRIES
 KITCHEN/HOME DECOR + APPLE PEELERS



GEM MINING

CHOOSE FROM A VARIETY OF MINING BAGS FILLED WITH GEMS, FOSSILS AND ARROWHEADS. USE THE RUNNING SLUICEBOX TO PAN YOUR ORE AND TAKE HOME ALL YOUR FOUND TREASURES



FAMILY FUN

APPLE BARN

FRESH PICKED APPLES -ROTATING VARIETIES
 FROZEN PIES, STRUDELS AND CRUMB CAKES
 FRESH PRESSED APPLE CIDER
 FARMHOUSE PICKLES, BBQ SAUCES
CHRISTMAS BOUTIQUE FILLED WITH UNIQUE HOLIDAY AND GIFT ITEMS
VISIT SANTA FRI, NOV. 29 - SUN., DEC 1, 10AM-3PM



U-PICK APPLES

NEW

PLEASE CHECK OUR SOCIAL MEDIA FOR DAYS/TIME AND VARIETIES AVAILABLE



CARY HOUSE

HISTORIC HOTEL • SINCE 1857

Experience a Historic stay in the heart of Historic Main Street!



Perfect for Gatherings:
Meetings. Weddings.
Reunions. Celebrations.

(530) 622-4271

300 Main Street • Placerville

www.caryhouse.com

Mention Code:

Farm Trails 24

**for \$15 off
per night**

Some restrictions may apply

Gold Country

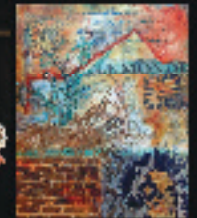
Artists Gallery



OVER 45 AWARD WINNING LOCAL ARTISTS



Open Daily from 10.00am to 6.00pm



www.goldcountryartistsgallery.com

379 Main St, Placerville, CA 95667 Call: (530) 647-7944

El Dorado County CHRISTMAS TREE GROWERS

Where your family memories begin!



Scan to Find
a Farm



Visit one of our family owned
Christmas Tree Farms
for your perfect tree
ChooseandCut.com

Visit beautiful SLY PARK RECREATION AREA

Black Oak equestrian trail and campground



Leisure lake



Here's a few things
you can enjoy.

- Day use and overnight camping — individual sites and large group areas, separate key facilities, swimming area with picnic.
- 640 acres of ponds and water
- 8.5 miles of equestrian
- 2 boat ramps for personal use (no trail)
- Boat rentals available (see website for hours and online reservation)
- Multi-use trails for hiking, mountain biking, and equestrian trails
- Licensed by the LE (donor available for rent)

Recreation for the whole family!

4771 Sly Park Road, Pollock Pines, CA
(530) 295-6810 – www.eid.org/recreation



Owned and operated by El Dorado Irrigation District

California's First Road Trip

Gold! The cry went up from Sutter's Mill and brought tens of thousands stampeding into California from the four corners of the world. These '49ers established hundreds of instant mining towns along the western foothills of the Sierra Nevada. Many of these historic and picturesque towns still exist, linked by California Highway 49, and retain their early architecture and charm, living reminders of the rich history of the Mother Lode.

ALL PHOTOS COURTESY: Visit El Dorado



- 1 Placerville Hardware Store** — Don't miss Placerville Hardware Store, "the oldest hardware Store West of the Mississippi."

- 2 Learn the History of Hangtown** – Stop by Fountain-Tallman Museum to find out more about the history of "Old Hangtown" or schedule a guided tour.



- 3 Stock Up for a Picnic** – Pick up some house-made sausages and charcuterie and picnic provisions to take on the road at Dedrick's Cheese.
- 4 Explore the Gold Mine** – At the Gold Bug Park & Mine, a self-guided audio tour takes you on an exploration 352 feet into a real gold mine.

Trace the steps of the pioneers driving north on Highway 49 to Coloma.



- 5 The site of gold discovery** – It was here, on January 24, 1848, that James Marshall discovered gold, touching off the most enormous gold rush in history. Marshall Gold State Discovery State Park.
- 6 Grab a Bite** – Argonaut Farm to Fork Cafe – Grab a bite at a cozy café where you'll find organic and seasonal foods from the area.



7 Take a Scenic Hike – Dave Moore Nature Area.

Stretch your legs on this one-mile loop trail that leads to the South Fork of the American River.

Once you reach the town of Cool, take a right on Highway 193.



8 Historic Georgetown Main Street – Georgetown

Main Street looks much as it did long ago, with wide streets and historic buildings. Take a self-guided stroll of the main street and check out the eateries, the Art on the Divide Art Gallery, and unique shops with their trinkets and treasures. One can't-miss here is the iconic Georgetown Hotel & Saloon, rumored to be home to several ghosts!



Once sated, continue back to Placerville on scenic Highway 193 following the magnificent ridgeline, crossing over the American River.



UPCOMING EVENTS IN EL DORADO COUNTY



PHOTO COURTESY: Paul Cockrell

JUNE 8, 2024

Golden History Days and Wagon Train

Celebrate Placerville's diverse history with food trucks, antique street fair, cultural music, living history performers, booths, and the much-loved Wagon Train!

JUNE 13 - 16, 2024

El Dorado County Fair

The theme for this year's event is Barrows, Boots & Bling and promises all the family fun and excitement you know and love. Think mutton bustin', live interactive exhibits, musical performances, clown college, free train rides, and even a funnel cake eating contest!



PHOTO COURTESY: Paul Cockrell

JUNE 22, 2024

Placerville Block Party

Join us for the Block Party on Placerville's Historic Main Street! The FREE event will feature live music, food from Main Street restaurants, scavenger hunt in Main Street stores, a kid zone, local beer and wine, and specials from Main Street merchants.



PHOTO COURTESY: Apple Hill Growers™

JUNE 22 - 23 & 29 - 30, 2024

Lavender Blue Festival

More than a dozen Apple Hill Growers their farms for two weekends to celebrate the blueberry and lavender harvest. Pick your own lavender bouquet or make lavender wreaths, buy local berry jams & blueberries, lavender donuts and blackberry hard cider.

JULY 4, 2024

Annual 4th of July Family Blast

Inflatable Fun, Corn Hole, Games, Face Painters, food, fun and more. Gates open at 3pm and live music starts at 6pm. Fireworks show starts between 9:30pm and 10:00pm

JULY 25 - 28, 2024

72nd Annual Jeepers' Jamboree

This is considered the oldest, toughest and largest organized event of this type in the world on the Rubicon Trail over the Sierra Nevada Mountain Range. Experienced guides, catered meals, live entertainment, drawings, fun games and relaxation.



PHOTO COURTESY: First Track Productions

PHOTO COURTESY: Apple Hill Growers™



JULY 20, 2024

Apple Hill Farm to Fork Dinner

The Apple Hill Growers invite you to enjoy a night on the farm with beautiful orchard and vineyard views and delicious wine paired meal. Guests will enjoy a 5-course meal and endless Apple Hill Grower hard cider and wine.

SEPTEMBER 21, 2024

Placerville Oktoberfest

This is a family friendly, free event! We're bringing a little bit of Bavaria to Main Street! Great beer, wine and German foods and snacks, and live music at the Bell Tower. The dogs are back too with the Dachshund Dash and Costume Contest!

OCTOBER 11 – 13, 2024

Coloma Gold Rush Live

During this three day event we turn the park into an 1850's tent town. Hundreds of docents and volunteers are dressed in period clothing, and have set up their demonstrations in a camp like feel to show what life was like during the gold rush. There are wagon rides, food, music, cannon firings and more. Event runs 10:00am-4:00pm each day. \$20.00 event fee per vehicle.

OCTOBER 19, 2024

Save the Graves Living History Cemetery Tours

This year's theme is Law & Order: A Historical Perspective. Throughout the day, skilled actors in period attire tell their character's story from beyond the grave. Each depiction is scripted and historically accurate. Between the brief performances, guests can wander the grand Victorian garden cemetery and discover the featured characters and other wonders of this century-and-a-half-old place.

NOVEMBER 2 – 3, 2024

Fair Play Harvest Festival 2024

Celebrate the wine harvest at 23 Fair Play wineries. Enjoy food, music, games, artisanal market vendors and most importantly, taste some of the best wines in the world as you explore Fair Play's beautiful wineries.

NOVEMBER

Holiday Festivities

The Festival of Lights on Historic Main Street and the El Dorado Hills Tree Lighting kicks off the holiday season. Get in the spirit with music, entertainment, carriage rides and a visit with Santa.

DECEMBER 1, 2024

Hangtown Christmas Parade

A local favorite for more than 40 years, this big parade is full of small town fun. You'll find marching bands, motorcycles, horses, ponies & mules, dogs and dancers, fire engines and floats, 4-H and 4 wheel drives. The parade starts on upper Broadway and winds its way to downtown Main street in Placerville, Rain or Shine.

DECEMBER 14 & 15, 2024

Christmas In Coloma

Many of the houses in town are decorated for the holidays and opened to the public for tours. Docents in the houses tell about the house and the people that lived there. This house tour is \$5.00 per person to participate in. Also join us for a vender craft fair, wreath making, carriage rides, music, kids games and a visit from Santa! Event runs from 10:00am-4:00pm each day.

JANUARY 25, 2025

Gold Discovery Day

Come celebrate the day that gold was discovered. Gold was discovered in Coloma by James Marshall on January 24, 1848. This is a larger than usual living history event with speakers telling stories of the gold discovery. Event is 11:00am-3:00pm.



PHOTO COURTESY: Menka Belgal

Relocating?
Looking for Open Space, Hiking,
Rafting, Trails & History?
Call Sol Nisbet Today!



Sol
Nisbet

Sol Nisbet

HOME LOANS

sol@homeloansbysol.com

*El Dorado County Chamber
of Commerce - Board member
Divide Chamber of Commerce - Treasurer
Long Time El Dorado County Resident*



Mortgage Loan Officer

530-401-5605

sol@homeloansbysol.com • www.homeloansbysol.com

NMLS 703009

DRE 02107713



El Dorado Brewing Company
Fine Ales & Lagers

6051 Enterprise Drive, Suite 102
Diamond Springs, CA 95619

(530) 558-4188
www.eldobrewing.com

Originally established in 1853, we specialize in Traditional Brews. We use only the finest Malt & Hops, and mountain water. Stop on by for a pint!

El Dorado Savings Bank

Come visit your community
bank, a trusted source for
over 65 years!

Experience superior customer service
at any of our
35 convenient branch offices
or visit us on-line at:
www.eldoradosavingsbank.com

**"Quality Makes
A Difference"**

SAFE—STRONG—SECURE



**EL DORADO
SAVINGS BANK**

65 Years of Service to our Community

Se habla Español

We thank our valued customers for
your continued support

800-874-9779

Member
FDIC
NMLS ID #71254

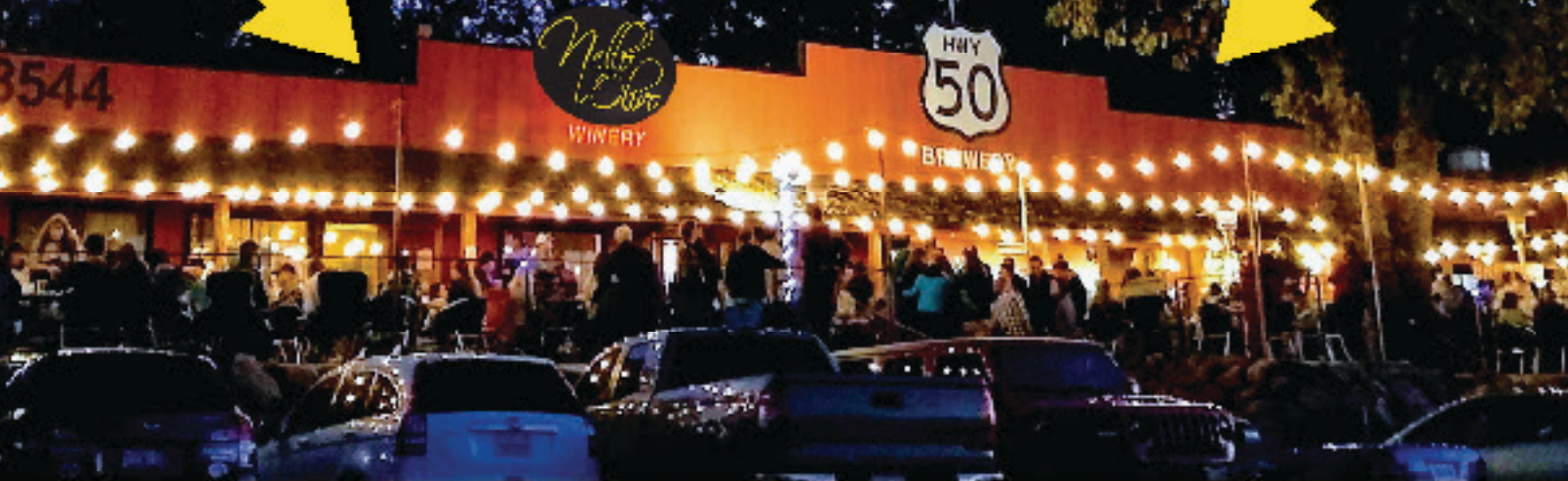


"Best Winery" VOTED **"Best Brewery"**

5 years running, Mt. Democrat Reader's Choice



TOGETHER ON APPLE HILL



A local FAVORITE DESTINATION for great drinks and relaxed fun!

**OPEN
DAILY**

*FAMILIES
and DOGS
WELCOME*

Award-winning BOUTIQUE WINE and CRAFT BEER

Hand-crafted PIZZA, SALADS & PUB FOODS

Large PATIO with VIEWS of APPLE HILL

Non-alcoholic Drink Choices

FREE Live Music Weekends



**SCAN FOR
LIVE MUSIC
CALENDAR**

530-303-3617
NelloOlivo.com

3544 CARSON ROAD
Camino, California

530-556-5060
Hwy50Brewery.com

WHERE THE CALIFORNIA GOLD RUSH BEGAN

This is where it all began. It was here, on January 24, 1848, that James W. Marshall discovered gold on the South Fork of the American River in the valley the Nisenan Indians knew as Cullumah (beautiful valley), touching off the largest gold rush in history. This singular event not only changed the fate of California but the entire nation.

The population of California and what would become El Dorado County exploded with miners hoping to strike it rich.

Today, Marshall Gold Discovery State Historic Park is home to the gold discovery site, located in the still visible tailrace of Sutter's sawmill in present day Coloma, is one of the most significant historic sites in the nation. See a replica of the original sawmill and over 20 historic buildings including a mining exhibit, Chinese store exhibits and schoolhouse exhibit. The park offers beginning panning lessons, Gold Discovery Tours, operating blacksmith shop, Gold Discovery museum, visitors center and mercantile. Visitors have the opportunity to pan for gold in the American River and enjoy hikes and picnics under the riparian oak woodlands. If it is true that history repeats itself, you've come to the right place!

PHOTO COURTESY: followtheshaddoe

PHOTO COURTESY: Jody Franklin

PHOTO COURTESY: Menka Belgal

PHOTO COURTESY: Menka Belgal

Finding Gold in Fair Play

Welcome to the Fair Play wine region, where every sip tells a story of passion and perfection. Nestled in the heart of the picturesque Sierra Foothills, this hidden gem boasts an array of amazing wines crafted with care and expertise. Fair Play offers more than just exquisite vintages. Immerse yourself in the warmth of the local community, where friendly faces welcome you with open arms. Beyond the vineyards, boundless adventures await, from lively events to leisurely games, horseback rides, and scenic hikes through our lush vineyards. Fair Play AVA (American Viticulture Area) is often described as a hidden gem or best kept secret by first time visitors. There is a sense of discovery when newcomers ask, "How did we not know about this beautiful wine region?"

The Fair Play AVA, located in the heart of El Dorado County, is one of the fastest growing wine regions in Northern California. What makes the Fair Play AVA so special is the altitude, climate and unique granite soil conditions that make it perfect for growing Mediterranean and Southern European varietals such as Rhone (Syrah), Bordeaux (Cabernet) and Italian (Barbera) style wines. The wine region is rich in history, where veteran winemakers built their wineries offering small lots of hand-crafted wines.

Reminiscent of Tuscany, Fair Play has 27 wineries nestled in a beautiful vista surrounded by rolling vineyard hills and mountain scape. In the last three years, six new wineries opened their doors energizing the area by producing high-quality award-winning wines. Recently, Wine Enthusiast, Wine Spectator and Spirit Magazines have awarded 90+ ratings to Fair Play wineries. Fair Play wineries have also won many, gold and double gold medals including top awards in prestigious national and international wine competitions for decades.

You will be immersed in breathtaking views, amazing wines, great food, fun events, and friendly people. The local vintners in Fair Play make your visit authentic and welcoming. If you haven't visited Fair Play, put this up and coming wine region on the top of your list. You will be glad you discovered Fair Play, the hidden gem of the Sierra Foothills.

Fair Play and its wineries are located just 40 minutes from Folsom on the southwest side of El Dorado County bordering Amador County. The wineries of Fair Play invite you to uncork, unwind, and experience the harmony of wine, food and endless possibilities!

Turn the page to discover all the Fair Play Wineries waiting for you!



WINERIES OF
★ ★ ★ ★ ★

FAIR PLAY
— AVA —
EST. 2001
EL DORADO COUNTY, CA
fairplaywine.com

Discover Gold in Fair Play

BUMGARNER WINERY



BUMGARNER
WINE & SPIRITS

7380 Vineyard View Drive
Thurs-Sun
12pm-4pm
or by appointment

Atop the ridge at 2750' elevation, experience the beauty of Fair Play while tasting all your favorite Bumgarner wines. Outdoor seated, table-side service personalized for your palate; whites, reds, sweets, & hard cider. Extraordinary views, quietude, and hospitality for your tasting pleasure. Truly where beauty and bounty meet. Swing, Bocce, & Cornhole available.

BUSBY CELLARS

BUSBY CELLARS

6375 Grizzly Flat Road
Sat 11am-5pm
Fri 1pm-5pm

Daily appointments always welcome.

Busby Cellars is a family-owned vineyard and winery specializing in small lots of estate-grown varietals. Enjoy panoramic vineyard views and incredible sunsets from the picturesque picnic grounds. Our limited production, award-winning wines are only available at the tasting room and always sell out quickly, so please be sure to visit! We also offer an on-site rental cottage, so why not turn your wine-tasting adventure into a luxurious weekend getaway?

530-344-9119
info@busbycellars.com
busbycellars.com

CANTIGA WINEWORKS



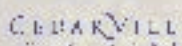
5980 Meyers Lane

Fri - Sun 11am-5pm or by appt
Cantiga's Gothic-style winery sits on a stunning knoll top, overlooking estate vineyards and gardens. Our classic,

handcrafted wines align well with food, age beautifully, and are very low in sulfites and easy on allergies. We specialize in wine and food pairing flights. Families and picnickers welcome!

530-621-1696
cantigawine.com

CEDARVILLE VINEYARD



6320 Maretail Road

Tasting by Appointment Only
Each wine is hand crafted by

Jonathan Lachs from our sustainably farmed estate vineyard at 2500 feet elevation. Everything we do in our energy efficient winery building is designed to reflect the unique character of our hillside vineyard, beginning with hand sorting grape clusters before crushing through to aging our wines in our underground caves. We are a true estate vineyard and winery. We look forward to meeting you!

530-620-9463
info@cedarvillevineyard.com
cedarvillevineyard.com

CHANEY FAMILY WINERY



8175 Fairplay Road

Tasting By Appointment Only
Escape to Chaney Family Winery for a truly exclusive experience.

We invite you to indulge in our award-winning double gold wines while soaking in breathtaking views of the FairPlay wine country valley from our elevated location at 2300 ft. Immerse yourself in the art and romance of winemaking as we share our unique craft, offering insights into what makes our region truly world-class. Let us create unforgettable memories together. Book your appointment today.

530-663-6065
info@chaneyfamilywinery.com
www.chaneyfamilywinery.com

CHATEAU D' ESTIENNE



2700 Omo Ranch Road
Fri & Sun 11am-4pm
Sat 11am-5pm

Château d'Estienne is a family owned winery and vineyard. It sits on top of a hill in California's Fair Play AVA with incredible views of the Sierra Nevada Mountain Range. Our new tasting room and grand outdoor seating offers you the perfect setting to make unforgettable memories while enjoying our award-winning wines.

530-620-7960
www.chateaudestienne.com

CIELO SULLA TERRA ESTATE VINEYARDS & WINERY



8061 Perry Creek Road
Fri - Sun 11am-5pm

Italian for "Heaven on Earth", this property is truly divine. Visit for a relaxed experience in the pet friendly tasting room and patio. Locally famous for their flavored sparkling wines, the estate grown reds are truly second to none. Enjoy picture worthy views of the Sierra foothills, estate vineyards and pastures while sampling the featured Iverson wines.

530-620-7474
cielosullaterra.com

E-16 WINERY



8085 Perry Creek Road

Fri - Sun 11am-5pm or by appt
A hillside vineyard offering unique visitor experiences in our tasting room and a subterranean cavern, offering critically acclaimed Pinot

Noir and Rhone Varietals.
530-620-6200
e16winery.com



ELEMENT 79 VINEYARDS



7350 Fairplay Road

Open 7 days a week 11am-5pm
We are not just a winery, we are a country club for wine drinkers.
• Highly rated premium hand crafted small production wines.

Rose, whites, reds and blends.
• 5 Star Service and experience
• Wine Country Tapas - Fri, Sat, Sun.
• Great Views
• EV Charging Station

At our winery, we don't just treat you like a customer, we treat you like family. Sit back and relax with our seated flights as we take you on a journey through the world of wine. So why settle for ordinary when you can experience the extraordinary? Come join us and uncork the magic!

530-497-0750
element79vineyards.com

FLEUR DE LYS WINERY



7696 Perry Creek Road
Wed - Thur 11am-4pm

Fri - Sun 11am-5pm

Nestled in the gentle hills of Fair Play, our family-owned winery specializes in Old World style wines that are aged to perfection.

530-620-2246
fleurdelyswinery.com

GOLDEN LEAVES VINEYARD & WINERY



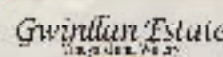
3625 Omo Ranch Road

Daily 10am to 5pm or by appt
If the gate is open com on in! Small family-owned winery invites you to explore their sustainably farmed vineyard, award winning wines and fabulous food. Ideal venue for

intimate weddings and private parties. Walk in for tastings & small plates. Lunch/Dinner 11am-6pm by reservation.

530-620-1888
GoldenLeavesWines.com

GWINLLAN ESTATE VINEYARD & WINERY

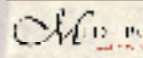


7060 Fairplay Road
Fri - Sun 11am-5pm

Enjoy our award-winning Estate wines and Champagne with spectacular views stretching over 60 miles. Meet the owners, winemaker and winery dogs.

530-723-2879
gwinllanestate.com

MEDEIROS WINERY



7480 Fairplay Road
Fri - Sun 11am-5pm
or by appointment

Producing quality wines by utilizing modern and traditional techniques in the processing and cellaring while embracing sustainable farming practices in the vineyards through proper vine, canopy and soil management.

408-427-7536
medeirosfamilywines.com

Fair Play – Your New Favorite Wine Tasting Destination

MELLOWOOD VINEYARD



2979 Mellowood Drive
Saturday 12pm to 5pm
Sunday 12pm to 4pm

Mellowood offers estate-grown award-winning wines with altitude and outstanding taste. A friendly, relaxed and laid back experience awaits you when you visit us. Our tasting room allows you to explore wines that express Fairplay's unique terroir. Take a bottle with you on a hike up Zin Hill and enhance your experience of this gold country with stunning views of the Sierras. For a full wine hospitality experience reserve our three-bedroom farmhouse through Airbnb.

530-599-0313
Info@mellowoodvineyard.com
mellowoodvineyard.com

MIRADOR WINERY



2501 Ormo
Ranch Road
Spring/Summer:
Fri – Sun 12-5pm

Fall/Winter: Sat - Sun 11am-4pm

Our limited production winery focuses on delivering some of the finest wines in the appellation from our estate vineyard. By keeping yields low, harvesting fruit at optimal ripeness and applying handcrafted techniques in the cellar, we are able to produce high-quality artisanal wines.

MV WINERY



7261 Fairplay Road
Fri – Sun 11am-5pm

A boutique winery that has received numerous medals and awards. MV has chosen a path of high quality and limited production wines. Visit our quaint and charming country setting, meet the winemaker and experience our big delicious and elegant wines. A taste that will leave you wanting more.

530-620-1067

OAKSTONE



6470
Irish
Acres
Road
Wed –
Sun 11am-5pm

A family-owned winery nestled in beautiful Fair Play. Known for quality, our wines are approachable and ready to drink now. Guests have a chance to meet the family and the winemaker behind our award-winning wines. We're ready to offer you a relaxing and intimate tasting experience.

PERRY CREEK WINERY



7400 Perry
Creek
Road

Thurs-Sun 11am-5pm

Perry Creek Winery is known for its gracious hospitality and small-production, handcrafted wines. We are the home of the legendary ZinMan Zinfandel, Cobra Reserves and the Altitude Series wines. Pack a picnic and relax in our beautiful park. We can't wait to see you!

POLYNESIAN GIRL

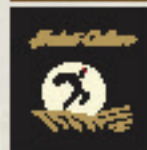


POLYNESIAN
GIRL

6020 Grizzly
Flat Road
Fri – Sun 11am-5pm

Beautiful small lot wines produced using techniques such as cold soaking, extended maceration, whole cluster fermentation and estate grapes grown with no herbicides or pesticides. You can also shop rare Tahitian Pearl jewelry, direct from Tahiti.

530-344-4788
polynesiangirlwine.com
SALUTI CELLARS



7505 Grizzly
Flat Road
Sat – Sun 11am-5pm

Located in a private canyon, SALUTI CELLARS offers distinctive, award-winning estate wines in a friendly, relaxed and picturesque atmosphere. Private cave tours, hiking trails, picnic grounds, bocce ball and guided horse trail rides are also available to our guests.

SENTIVO VINEYARDS & WINERY



7460 Fairplay Road
Friday-Sunday
11am-5pm

Escape to Sentivo Winery and Vineyard, nestled in El Dorado's Fairplay AVA. Savor our award-winning wines and enjoy stunning Sierra Foothill Views. Proud Partners of the Sacramento Kings.

916-936-3306
info@sentivovineyards.com



SHADOW RANCH



SHADOW
RANCH

7050 Fairplay
Road
Fri – Sun 11am
to 5pm

At Shadow Ranch we believe you deserve to drink great wine every night. We therefore specialize in creating high quality, small batch, single vineyard wines at an affordable price. We are family owned and operated, nestled in the heart of the high elevation Fair Play AVA. Here you can enjoy the expansive views from our beautiful tasting room, receive top notch customer service, and taste some truly fantastic wines. Let us show you the best of what this amazing region can offer.

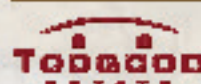
530-620-2785
SKINNER VINEYARDS

SKINNER

8054
Fair-
play
Road
Fri-Sun 11am-5pm

Perched at 2,700' we welcome visitors to an unhurried and peaceful experience surrounded by the incredible views of the Sierras. Our Rhone-style wines weave together our passion, vineyards, and the bounty of El Dorado that we are so proud to be a

TOOGOOD ESTATE WINERY



7280
Fairplay
Road
Daily
11am-6pm

Set on 40 acres of rolling hills, discover the wines of the Toogood Estate Winery. Experience wine tasting in our 5000sf Cave or relax on our Waterfall Patio.

WINDWALKER VINEYARD



7360 Perry
Creek Road
Daily 11am-5pm

Open daily with no tasting fee or appointment needed. Our estate vineyard produces Sauvignon Blanc, Chardonnay, Cabernet Sauvignon, Petit Verdot, Cab Franc, Malbec and Merlot. We offer many other varietals too, such as Zinfandel and Barbera. Our beautiful picnic area is perfect for a day out in Fair Play.

530-620-4054
Info@WindwalkerVineyard.com

2 Historic Towns that will *take you back in time*

Placerville is a charming California Gold Rush town named after the placer gold deposits found in its riverbeds and hills in the late 1840s. Located at the crossroad of Highway 49 & Highway 50, this is a perfect stop on the popular route to Lake Tahoe. Placerville's treasured heritage can be seen in the historical, 19th century architecture of its downtown core. An important historic landmark on Main Street is the Bell Tower, which still stands as a monument to the city's volunteer firemen. Stroll the street or shop till you drop at one of the more than 50 unique shops, fine art galleries, and restaurants.



PHOTO COURTESY: Paul Cockrell



PHOTO COURTESY: @gojiragir13

Georgetown

Main Street in Georgetown looks much as it did long ago with its wide streets and historic buildings. A young man named Hudson is credited with discovering the rich diggings in Georgetown in the summer of 1849. Soon after, a company of sailors lead by George Phipps began working the stream at a spot below the present townsite where they uncovered rich placers and took out a fortune in gold. Located off of Highway 193, this hidden gem is definitely worth the road trip. Today you will find quaint shops, eateries and antiques. Don't miss the impressive Art on the Divide Gallery or take in a tall tale or two at the Georgetown Hotel & Saloon.



This off the beaten path winery is doing things *different*



TO BOOK

Visit explorerevel.com/wadhiwines

HELP & TRAVEL RECOMMENDATIONS

Email wines@sandhiwines.com

Visit Sandhi Wines in Santa Barbara County for a unique wine tasting experience right in the wine cellar. Take a tour of the winery, taste through the best sites on California's Central Coast, and finish with a barista-level cup of locally roasted espresso.



Things to Do

for the young, and the young at heart

If you only have a few hours...

Gold Bug Mine – 2635 Gold Bug Lane Placerville. The 362-foot hard rock mine, gift shop, stamp mill, blacksmith shop, Hattie's museum, hiking trails and gold panning. Park is situated on over 62 acres.



PHOTO COURTESY: Golden State Family Adventures

Marshall Gold Discovery State Historic Park on the South Fork of the American River in Coloma. It was here in 1848 that gold was first discovered touching off the largest human migration in history, the California Gold Rush.



Stroll down **Placerville's Historic Main Street** and enjoy a variety of shops that include fabulous art galleries, unique antiques, museum, the oldest hardware store west of the Mississippi. Sip some of the El Dorado County's award winning wines and savor the

flavor of locally grown products.

Visit A Museum Fountain & Tallman Museum

524 Main Street
Friday – Sunday, 12pm to 4pm
Exhibits cover early history of Placerville from Native Americans, Miners and Merchants to an be arranged
<http://edchs.org/fountain-tallman-museum>



PHOTO COURTESY: Mountain Democrat

El Dorado County Historical Museum
104 Placerville Drive, Placerville
Artifacts from the County's past reflect the people, activities and events that occurred here. Native American people, and the Gold Rush, the logging and

lumber industry, transportation, and some of the historical figures such as Snowshoe Thompson, the Goat Doctor and John Studebaker, famous for his gold-rush era wheelbarrows. Group Tours can be arranged
Wednesday – Sunday, 12pm - 4pm (Admission is free)

Take a tour at Wakamatsu/ Gold Hill Walk & Historic Tours. Learn about the rich history of the Wakamatsu Tea and Silk Farm, the first Japanese Colony site established in America. (Gold Hill area). Wakamatsu@ARConservancy.org.



PHOTO COURTESY: Mountain Democrat

Ride the Rails – The El Dorado Western Railroad is the oldest railroad line west of the Mississippi River. Rides leave at 10am, 11am, 12pm, 1pm



PHOTO COURTESY: Mountain Democrat

Boarding at **the El Dorado Station** on 1st and 3rd Sundays – 4650 Oriental Street, El Dorado, CA
Boarding at **the Shingle Springs Depot** on 2nd and 4th Sundays – 4241 Mother Lode Drive, Shingle Springs, CA
Call (530) 663-3581 on Sundays for the time of the last ride or to see if space is available.

Tickets: Ages 9 and up: \$8 | Ages 3-8: \$3 | Under age 3: Free
Space is limited, and tickets are sold “first come, first served.”

The Community Observatory. The Community Observatory is your window to the night sky! See the stars through the 17-inch and 14-inch reflecting telescopes on a clear, dark night. Follow planets or the moon as they travel across the sky. Bring the whole family for an unforgettable experience in the foothills of El Dorado County.
Friday & Saturday
9pm – 11pm



PHOTO COURTESY: Mountain Democrat

Stay for more than a day

Go whitewater rafting – one of the most popular activities in the summer. El Dorado County has more than 30 outfitters ready to guide visitors down the South Fork of the American River. Also great for kayaking, canoeing, camping and fishing.



Go wine tasting at one of nearly 70 wineries sprinkled throughout El Dorado Wine Country. El Dorado's wineries have a wide diversity of award winning wines, friendly tasting room staffs and idyllic views of snow-capped mountains and oak-studded foothills.

Come to the Apple Hill® and find a day filled with old-fashioned fun. Over 50 farms and ranches provide farm fresh fruit and vegetables, baked and canned goods, crafts and entertainment.

Enjoy the Sly Park Recreation Area, offering camping, hiking, boating, fishing, equestrian trails and campgrounds.

Explore Desolation Wilderness. Enjoy spectacular scenery, hike, cross-country ski, ride horseback, or enjoy other outdoor activities. Travel in the wilderness is restricted to hikers and packstock. No motorized vehicles allowed. Permit required.

Visit the El Dorado National Forest/Crystal Basin Recreation Area

– provides diverse recreational opportunities to the public. Fishing, hiking, camping, kayaking, swimming, boating, horseback riding and cycling.



KAYAKING, SUP, & RAFTING EQUIPMENT
SALES & RENTALS, ONLINE & IN STORE.



THE RIVER STORE

530-626-3435 • 1032 Lotus Rd
TheRiverStore.com
Tuesday - Monday 9am to 5pm 

SLY PARK PADDLE RENTALS
Kayak, Canoe & SUP rentals



RESERVE NOW!
Online:
currentadventures.com 

530-333-9115
4771 Sly Park Road, Pallock Pines
Open Fri, Sat & Sun 9-5pm thru Sept

LAKE NATOMA PADDLE RENTALS
Black Miner's Bar
Rentals, Classes, Event Hosting
for SUP, Canoe and Kayak



RESERVE NOW!
Online:
LakeNatomaPaddleRentals.com

Lake Natoma, Folsom
(530) 626-3363
info@CurrentAdventures.com
Open May-September 

LAKE TAHOE

Lake Tahoe is a world-class year around vacation destination located along the eastern edge of El Dorado County. While hotels and ski resorts draw millions of guests each year, the area's main attraction continues to be the restful silence of the wilderness and the awe-inspiring beauty of the Lake. As the Washoe Indians realized centuries ago, the "edge of the lake" is a unique and special place.

Elevation: The average surface of Lake Tahoe is 6,229 feet above sea level. The highest peak rising directly from the shoreline is Mt. Tallac at 9,735 feet. The highest point in the Tahoe Basin is Freel Peak at 10,881 feet.

Volume: Lake Tahoe contains an estimated 39.75 trillion gallons or 122 million acre-feet of water. That's enough water to cover the entire state of California to a depth of 14.5".

Purity: The water in Lake Tahoe is 99.7% pure, about the same as distilled water. A white dinner plate can be seen at 78' below the surface.

THINGS TO DO

Skiing	Fishing
Snowboarding	Beaches
Snowshoeing	Golfing
Sledding	Camping
Tubing	Spas
Hiking	Shopping
Biking	Emerald Bay
Boating	

PHOTO COURTESY: Getty Images

LAKE TAHOE



**Helping you Navigate
Your Next Step to
Wellness**
YOUR CANNABIS & HOLISTIC
WELLNESS CENTER

Come in for a **FREE CONSULTATION** with our knowledgeable staff to discuss how cannabis may assist you in finding relief from

- Pain
- Anxiety
- Insomnia
- PTSD
- Cancer
- Arthritis

Scan for Menu



Come **CHUCK** out our Daily Special! 5% off purchase with this ad.



CHUCKS WELLNESS CENTER AND CANNABIS DISPENSARY

530-303-3120 • 1318 Broadway, Placerville
chuckswellnesscenter.com



ART ON THE DIVIDE GALLERY

Paintings
Photography
Pottery
Woodcraft
Jewelry
Glass
Stamps
Leather
Art Supplies

Art thrives ON THE DIVIDE

6295 Main St
Georgetown
530-333-2787
Thursday - Monday

Check Website for hours
www.ArtOnTheDivide.com

Where to Play on a snow day...

Winter in El Dorado County means snow...in some cases, lots of it. If you're looking for places to build snowmen, sled in fresh snow, or have a snowball fight, you're in luck. There are numerous locations throughout the region which are set up specifically for that.

California SNO-PARKs

There are 19 SNO-PARK sites throughout the Sierra Nevada. Each has a distinctive brown highway sign identifying its location. SNO-PARKs are open seasonally between November 1st and May 30th. Day use permits may be purchased for \$15.00 or a season permit for \$40.00 from various vendors throughout California and Nevada. Check the website http://ohv.parks.ca.gov/?page_id=1233 for a current list of where you can purchase a permit, or call the OHMVR Division at (916) 324-4442.

Taylor Creek

Taylor Creek Parking Lot. West side of Highway 89, just north of Camp Richardson in El Dorado County. Cross-country skiing to Fallen Leaf Lake. Limited snowmobiling and snow play. Call USFS at 530-543-2600.

Iron Mountain

Iron Mountain Parking Lot. North side of Highway 88, at the Mormon-Emigrant Trail Road, 40 miles east of Jackson in El Dorado County. Extensive snowmobile trails. Cross-country trails and snow play areas. Call USFS at 209-295-4251.

Carson Pass

Ranger Station Carson Pass. South side of Highway 88 at Carson Pass 60 miles east of Jackson in Alpine County. Very popular cross-country ski area with limited snow play. No snowmobiles. Call USFS at 209-295-4251

Echo Lake

North side of Highway 50 at Echo Lake Road half mile west of Echo Summit. Popular cross-country ski area with limited snow play. No snowmobiles. No parking on entry road. Call Lake Tahoe Basin Management Unit at (530) 644-2324

Hope Valley

Hope Valley Parking Lot. South side of Highway 88 at Blue Lakes Road 5 miles east of Carson Pass and 2 miles west of Picketts Junction (Hwy. 88 and 89) in Alpine County. Snowmobile trails, cross country skiing, dog sledding and limited snow play. No overnight parking allowed. Call USFS at (775) 882-2766



PHOTO COURTESY: Tahoe Outdoor Adventures

Tube Tahoe

Tube Tahoe is the home of winter fun for the whole family. At over 500 feet in length, their machine groomed tubing lanes are some of the longest in the area. They're located in Meyers, next to the Holiday Market. <https://tubetahoe.com/>

Adventure Mountain Lake Tahoe

This privately owned snow play area features groomed and managed sledding hills, restrooms, and parking. User fees are \$40 – \$45 per vehicle, and there's an extra parking fee for larger vehicles such as motor homes and vehicles with trailers. Currently, there are no season passes and no overnight parking. Adventure Mountain is not part of the SNO-PARK system; therefore, they do not accept SNO-PARK tickets. <http://adventuremountaintahoe.com/> Hours: Monday – Friday 10 am to 4 pm, Saturdays, Sundays and Holidays 9 am to 4:30 pm, from late November to April, weather and snow permitting.

Please help us keep these special places open for years to come. Pack out your trash, including broken sleds. Park in designated areas. Thank You!

ELDORADO NATIONAL FOREST & DESOLATION WILDERNESS

PLACERVILLE RANGER DISTRICT

4260 Eight Mile Road, Camino, CA 95709
530-644-2324
TTY 530-647-5314
FAX 530-647-5311
Office Hours: 8:00 AM - 4:30 PM
Winter : Monday - Friday. Closed Holidays.

GEORGETOWN RANGER DISTRICT

7600 Wentworth Springs Road
Georgetown, CA 95634
530-333-4312
TTY 530-333-5511
FAX 530-333-5522
Office Hours: 8:00 AM - 4:30 PM
Winter: Monday - Friday. Closed Holidays.
Summer: 7 Days/Week.

PACIFIC RANGER DISTRICT

7887 Highway 50
Pollock Pines, CA 95726-9602
530-644-2349
TTY 530-647-5407
FAX 530-647-5405
Office Hours: 8:00 AM - 4:30 PM
Fall: 6 days a week (after Labor Day)
Winter: Monday – Friday
Summer: Monday - Saturday from
May 24th through Labor Day Weekend.

Eldorado National Forest

The Eldorado National Forest offers amazing places for hiking, biking, fishing, camping, skiing, nature viewing and scenic drives.

Desolation Wilderness

Desolation Wilderness, located west of Lake Tahoe in El Dorado County, may be considered small for a wilderness area at nearly 64,000 acres, but it compensates with dramatic scenery ranging from starkly beautiful granite to cerulean blue alpine lakes. Visitor permits are required year-round for both overnight and day hikes. Its many glacially formed lakes and streams make it one of the most scenic stretches of the Pacific Crest Trail and Tahoe Rim Trail.

PHOTO COURTESY: Visit El Dorado

EL DORADO TRAIL

The El Dorado Trail runs more than 35 miles from Camino west to the line between El Dorado and Sacramento counties, just south of Folsom. It follows two former rail lines, the Southern Pacific Railroad and Michigan-California Railroad, and is designed to accommodate hikers, mountain bikers, and equestrians.

The rail-trail is a work in progress. Between Camino and Diamond Springs, where the trail winds through the Sierra Nevada foothills, it is largely paved. For the remainder—from El Dorado westward—the trail has a natural dirt surface, often with the original tracks and ties still intact.

A small section of those tracks are still in use. The El Dorado County Historical Museum operates excursion trains on the El Dorado Western Railroad on Sundays between the Shingle Springs Depot (4241 Mother Lode Drive) and the El Dorado Station (6000 Oriental Street).

In Placerville, one can easily hop off the trail to enter downtown and enjoy the historical buildings and charms of an old gold-rush town. Between Placerville and Diamond Springs, a highlight of the trail is the breathtaking Weber Creek trestle that dates back to 1903 and towers about 100 feet above the creek.

Farther west, trail-goers can shore up in Shingle Springs, where amenities can be found along Mother

Lode Drive with several restaurants within a few blocks. On the south side of the street is Bradford Park, which offers restrooms and covered picnic areas.

From Shingle Springs to the county line, the views are pure wild west, where goats and cattle roam alongside the trail.

PARKING AND TRAIL ACCESS

On the east end of trail, parking is available in the Placerville area:

- In Smith flat, a large parking lot is available near intersection of Jacquier Road and Camelia Lane.
- Parking is also available at the Placerville Station (2970 Mosquito Road) at the intersection of Mosquito Road and Clay Road. To reach it, take the Broadway exit from US 50. Restrooms are also available in the building, which serves as a trailhead and bus station.
- In Diamond Springs, parking is available off Missouri Flat Road. (Do not park in the adjacent Sierra Door & Supply lot as it is private property.)

On the west side of the trail, parking is available in Shingle Springs. There is a gravel parking lot in Bradford Park (4300 Motherlode Drive).



PHOTO COURTESY: Paul Cockrell



PHOTO COURTESY: Paul Cockrell



PHOTO COURTESY: @DMAC_photo



"Discover history brought to life at the El Dorado County Historical Society's Fountain & Tallman Museum! Step into the oldest surviving structure on Placerville's Main Street, the original 1852 Soda Works building, and journey through time. Explore specially curated artifacts and exhibits showcasing El Dorado County's rich heritage, from the Gold Rush era to the timber, agriculture, and transportation industries. Delve into the opulent Victorian-era lifestyle of Stella Ralston Tracy, a prominent Placerville resident.



Visit our website for the latest hours and visitor information:

<https://edchs.org/fountain-tallman-museum>

Don't miss out—experience the excitement of history with us!



EL DORADO COUNTY
HISTORICAL
SOCIETY



Fountain & Tallman Building
524 Main Street, Placerville, Ca 95667
530-626-0773

CRYSTAL BASIN CELLARS

SINCE 2000!

Winery & Tasting Room

Open 7 Days

(530) 647-1767
3550 Carson Road
Camino, CA 95709

Bringing the Wine to the People!

CRYSTAL BASIN
STATION

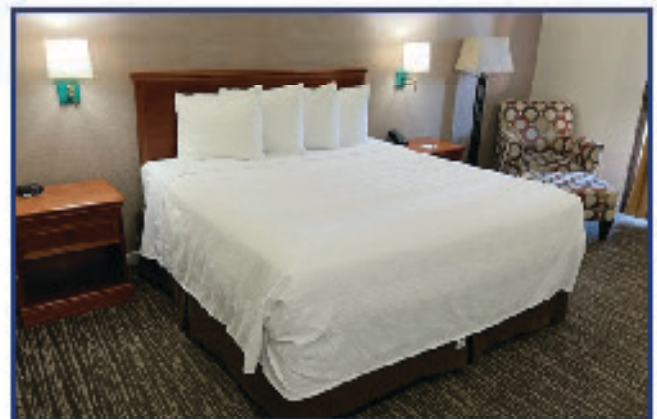
WINE TASTING
SUTTER ST | FOLSOM

Open Thursday thru Monday

(916) 672-9440 • 813A Sutter Street • Folsom, CA 95630
crystalbasin.com

Rest in Comfort!

Rest in comfort in our newly remodeled rooms!



Visit Nature's Wonderland!

Best Western Stagecoach Inn
5940 Pony Express Trail
Folsom, CA 95726
530-644-2029



GOING FISHING

This is an angler's paradise!

The various streams and creeks in El Dorado County hold more trout than most people think. You can find a map showing all of the named streams and creeks on the west slope of El Dorado County simply by visiting eldoradotu.org. Once there you can select your favorite stream, then check the fish index attached which shows you the type of trout you can expect to find on the end of your line when fishing that water. All streams that drain into the American River watershed are open year round with certain restrictions.



PHOTO COURTESY: Mountain Democrat

Legend:

RB – Rainbow Trout, BT – Brook Trout, BN – Brown Trout, CT – Cutthroat Trout, L – Lahontan, LK – Lake Trout, K – Kokanee.

STREAMS & RIVERS

South Fork: RB, BT, BN
Middle Fork American: RB, BT, BN
Silver Fork American: RB, BT, BN
Rubicon River: RB, BT, BN
Caples Creek: RB, BT, BN
Consumnes River: RB, BT, BN
Gerle Creek: RB, BN
Camp Creek: RB, BN

LAKES

Jenkinson (Sly Park): RB, BN, LT, Bass
Union Valley: RB, BN, LT, BT, K, Bass
Ice House: RB, BT, BN
Loon Lake: RB, BT, BN
Echo Lake: RB, BT, CT (L), K
Wrights Lake: RB, BT, BN
Finnon Lake: Bass
Georgetown Lake: Bass
Folsom Lake: Bass
Cameron Park Lake: Bass

Source data: Ralph Cutter, Sierra Trout Guide and USDA Forest Service, ENF.

Mother Lode Motel

Placerville, California

The Mother Lode Motel is located in Placerville in the heart of Gold Country.
 It is 45 miles east of downtown Sacramento,
 55 miles west of South Lake Tahoe and close to Apple Hill.

Enjoy our newly renovated rooms and relax in our pool. We provide many of the amenities found in larger hotel chains, but at the budget rates you're looking for.

Point View Dr. Exit off Hwy 50
 1940 Broadway, Placerville, CA 95667
530-622-0895 www.placervillmotherlodemotel.com



Share your adventures...
#EldoradoCounty
#Placerville

RUBICON TRAIL

CROWN JEWEL OF ALL OFF HIGHWAY TRAILS



PHOTOS COURTESY: First Track Productions

THE RUBICON TRAIL is a 22-mile off-road adventure that cuts across the Sierra Nevada, between the gold rush town of Georgetown and the pristine Lake Tahoe. It boasts stunning, panoramic views of the Sierra Nevada, fields of boulders and interlocking flat stone, and sweet-smelling pine and fir trees.

This is an off-road experience of a lifetime that will test your mental and physical limits as well as your technical skills and preparation. It offers the courageous motorist a chance to travel a historical path through one of the nation's most treasured natural landscapes. It is widely recognized as the premiere OHV route in the United States and has been called the "crown jewel of all off highway trails." At one time, it was revered as the most difficult, rated 10 on a scale of one to 10, due to its narrow passages, rocky climbs, and occasional mud hole.

In 1953, the Rubicon Trail hosted the first Jeepers Jamboree, which continues every year to this day on the last weekend of July.

The Rubicon Trail Foundation, Friends of the Rubicon, El Dorado County, and the Eldorado National Forest are the trusted stewards of the Rubicon Trail, ensuring sustainability for this special place. Their continued efforts and collaboration are vital to keep this "crown jewel" of OHV routes open and dedicated to the future health of the Rubicon Trail.



4 Unique Adventures on the road to Lake Tahoe

An average of 40,000 cars travel from Sacramento and South Lake Tahoe through the Sierra Nevada Foothills on scenic Highway 50 every day. But the vast majority have no idea what they are missing less than a mile away from this popular route. If you're willing to explore, you'll be rewarded with unique adventures (along with some photos, wine, and even a freshly baked pie!).

Gold Bug Park & Mine

If you've ever wondered what it's like to walk 352 feet into a real hard rock mine from the Gold Rush days, you'll want to stop at Gold Bug Park & Mine. Gold Bug is tucked away in a 62-acre park in the heart of Placerville, just one mile north of the freeway, and features a blacksmith, stamp mill, museum, gift shop, covered picnic area, and gem panning.



Wineries

El Dorado County is home to more than 70 award-winning wineries and some of the best are located just off the freeway in Placerville and Camino. The wineries feature breathtaking vistas, a wide diversity of award-winning wines, and delight around every bend. El Dorado County wineries are known for their vibrantly flavorful, distinctly delicious wines, grown in the dramatic elevations of the Sierra Nevada. Wineries here boast outstanding value, taste, and



variety, along with frequent opportunities to meet the winemakers and owners. Stop off and visit a winery or two. You may discover your new favorite wine!

Fun fact: it's one of California's oldest wine-producing areas, as vineyards and wineries first flourished here during the Gold Rush era!





PHOTO COURTESY: Bill Robinson

Historic Main Street Placerville

Located just one block from the freeway, Placerville is a charming gold rush town with shops and restaurants woven amongst businesses that date back over 100 years, like Placerville Hardware (the oldest hardware store west of the Mississippi). In the center of town, you'll find the Bell Tower, the centerpiece for events throughout the year including parades & celebrations, Stop in Placerville to stretch your legs with a self-guided or docent-guided historic walking tour of "Old Hangtown," grab a bite, or even do some shopping.

Apple Hill™

Of the more than 50 family farms and ranches in the Apple Hill Growers Association, nearly a dozen are less than a mile off the highway, offering fun agricultural excursions, freshly baked pies, desserts and candies, handmade crafts and gifts, and seasonal fruits and veggies. Many ranches are open only in the fall, but 24 Carrot Farm Stand & Hidden Star Camino are open year-round. Along with a selection of mouth-watering baked goods & hard cider, Hidden Star Camino is home to a miniature old-west town, Kids Town.



PHOTO COURTESY: Mike Battey

Premium Orchard & Vineyard Supplies




PLACERVILLE Est. 1915
FRUIT GROWERS

**WE CARRY A WIDE
SELECTION OF ...**

**Fertilizers • Herbicides
Quality Tools • Organic Fertilizers
Irrigation Equipment • Fencing
Water Tanks • Wood Stove Pellets
Friendly, Expert Advice
& Much More!**

**Hours: Mon-Fri 8:30am-5pm
Sat 9am-1pm**

**4600 Missouri Flat Road
Placerville • (530) 622-2640**



Your map to Shopping • Dining •

PLACERVILLE'S HIS



RESTAURANTS • WINES • COFFEE

3 Toogood Cellars Tasting Room

Build Your Own Wine Flights from the exceptional Toogood Estate wines of the Sierra Foothills in El Dorado County. You will taste the difference with every sip.

304 Main Street • 530-344-7010 • toogoodwinery.com

Open: Thurs – Mon, 1pm – 8pm

4 Placerville Public House Family Restaurant & Pub

A comfortable family restaurant & Pub located in the heart of historic Placerville. Featuring a farm fresh gastro pub menu, craft beers and entertainment. The Placerville Public House is sure to have something for everyone.

305 Main Street • 530-303-3792 • placervillepublichouse.com

Open: 7 Days

7 Enchanted Forest Dining Experience

AS SEEN ON FOOD NETWORK – WINNER OF BEST BITE IN TOWN. DINE MAGICALLY! Irish Celtic, OLD WORLD Themed DESTINATION RESTAURANT! Beautiful Enchanted Nature Decor! Live Irish music. Large menu of fresh house made foods - Crepes, Fondue, Filet & Lobster plus Vegan & Gluten Free OPTIONS. Try a Flight of our popular delicious MEAD (Honey Wine).

372 Main Street • 916-715-9755

Check out our hours and menu at www.enchantedforestdining.com

8 SAVORY Pies of the World

Take a CULINARY JOURNEY and enjoy our fresh made lunch and dinner savory Pasty Pies from over 10 countries. Irish, Thai, French, Russian, Japan, Hawaiian & more! Soup of the day and desserts by the slice too. READY IN 6 min!

374 Main Street • 530-777-7437 • savorypiesoftheword.com

Open: 7 Days 12pm – 7:30pm

12 Powell's Steamer Co & Pub

Traditional seafood dishes, sandwiches, salads, 12 beers on tap, local wines, full liquor bar, live entertainment most nights, daily specials and HAPPY HOUR specials!

425 Main Street • 530-626-1091 • powellssteamer.com

Open: 7 Days

15 Old Town Grill

The best burgers in town! Satisfy your senses with gourmet chicken sandwiches, specialty salads and creative daily specials. Top it off with a milk shake or root beer float. Featuring organic produce, free-range, grass fed, hormone-free meats, buffalo & elk burger. Gluten-free & vegetarian options.

444 Main Street • 530-622-2631 • otgplacerville.org

Open: Wed – Mon

17 Amore Mio Italian Bistro

Experience an authentic taste of Italy prepared by owner and Chef, Simona Salvatori, a native of Rome. Each dish is made in house daily with ingredients imported from Italy. Featuring local & Italian wines to compliment the rotating menu and seasonal dishes. Saluti!

451 Main Street #8 • 530-303-3148 • [f @AmoreMioBistro](https://www.facebook.com/AmoreMioBistro)

Open: Tue – Sat

18 Cappelli Wine

Quality, value and sustainability are the hallmarks of Cappelli Wine. Reasonably-priced, small-batch and single-vineyard wines made from locally-sourced grapes, we offer a \$2 credit if you return your clean bottle for refill.

484 Main Street • 530-870-4372 • cappelliwine.com

Open: 7 Days

21 Rocker Oysterfeller's kitchen + saloon

A festive bar and restaurant featuring BBQ oysters, fresh salads, buttermilk fried chicken, tacos and the best burgers around. Enjoy both classic and seasonal cocktails from our full bar and a great selection of draft beer and local wines.

564 Main Street • (530) 295-9408

Open: 7 Days

22 The Market on Main

A Family-owned eatery with a local wine, craftbeer & a fun food menu. Quality food from empanadas to something for everyone.

585 Main Street • 530-303-3444

Open: Tue – Sun

23 The Independent Restaurant

An elevated dining destination with a craft cocktail infusion menu and top-tier, fun atmosphere.

629 Main Street • 530-344-7600

Open: Wed – Sun

SHOPPING • SERVICES

1 Lofty Lou's Yarn Shop

Lofty Lou's Yarn Shop is committed to providing a fabulous selection of yarn and fiber, felting, or weaving. Our vast knowledge and any crafters dream. We also offer classes for all skill levels.

263 Main Street • 530-642-2222

Open: 7 Days

2 Historic Cary House Hotel

A beautiful boutique hotel located in the heart of historic Placerville. Well-appointed rooms, suites and a full bar. Elegant, early Americana. It's a beautiful blend of modern amenities. Free wifi and parking.

300 Main Street • 530-622-4200

6 VibesUP – Vibrational

What a treasure! As seen on P. VibesUP is a 'natural solutions' technology that helps you live life more fun, simple, healthy and happy. Support for Allergy or Pain support! It's a game-changer.

366 Main Street • 530-677-1234

Open: 7 days

HISTORIC MAIN STREET



Guide to Historic Main Street

- EATERIES/PUBS
- SHOPPING/SERVICES
- ◆ GALLERIES
- ▲ VISITOR INFORMATION
- P PARKING
- ♿ PUBLIC RESTROOM

Scan for
Placerville
Events!

a great retail selection, a focus on family friendly atmosphere. Known for gyros & flatbread pizzas —there's

92 • [f](#)@The Market On Main

Restaurant & Bar

presenting an outstanding American full bar staffed by our friendly crew. 45 • [independentplacerville.com](#)

LODGING

community owned and operated. We feature and fiber for knitting, crochet, spinning, button selection and wall of notions is offer a broad selection of classes for all

70 • [loftlous.com](#)

Hotel

located on Historic Main Street with and a banquet room decorated in a perfect blend of the gold rush with and parking too.

71 • [caryhouse.com](#)

Therapy Products

BS TV — Local 'mom inventor' patents y. Explore over 100 ways to make your and life UPlifting. Ask for a FREE GIFT REALLY WORKS!

48 • [vibesup.com](#)

10 T.W. Bonkers Toy & Candy Emporium

Your affordable neighborhood, toy and candy store. Featuring an awesome selection of toys, games, jigsaw puzzles, novelties, fidgets, and more! Plus: fresh fudge, truffles, and Annabelle's gourmet chocolates!

398 Main Street • 530-642-2671 • [bonkerstoystore.com](#)

Open: Mon – Sat

11 Placerville News Company

Placerville's ONLY Music Store and Art Supply Store. Official Hallmark and Melissa & Doug dealer. Unique gifts for all occasions including cards, gift wrap, ornaments, collectibles, & stationery. Family owned & operated since 1912.

409 Main Street • 530-622-4510 • [pvillenews.com](#)

Open: Wed – Mon

13 Artistic Beads & Studio

Beads, Crystals and Crafts! Discover the most amazing assortment of hard to find, vintage and out of production beads, crystals and other rarities. Owned by skilled Beading Artist.

440 Main Street • 530-363-2475 • [artisticbeadsstudio.com](#)

Open: Tue – Sat, 10am - 5pm

14 Placerville Hardware

The oldest hardware store west of the Mississippi! Gold panning supplies, metal detectors, kitchen goods, Lodge cast iron pans, unique gifts, candles, yard art, Yeti coolers & mugs and MORE! The Store That Has it ALL!

441 Main Street • 530-622-1151 • [placervillehardwareinc.com](#)

Open: 7 Days

16 Violets Are Blue

A women's consignment boutique offering carefully chosen clothing, shoes, jewelry, handbags and other accessories. New inventory every day!

450 Main Street • 530-622-8362 • [violetsareblue.org](#)

Open: 7 Days

19 Kitchen Goods

For the love of all things Kitchen! We are a full kitchen supply store with beautiful handmade items. From cookware, Coffee & Espresso makers, Barware, Dinnerware, Bakeware, Chefs tools, Linens, Cookbooks and Curated Gourmet Foods, both local and imported from Europe. Make us your new favorite gift store!

492 Main Street • 530-303-3778 • [@KitchenGoodsOnMain](#)

Open: 7 Days

GALLERIES

5 Art Studio 360

20+ local award winning artists offering original work in a wide variety of mediums including glass, metal, paintings, wood, clay, jewelry, textiles and more. [f](#)@ArtStudio360;

[@artstudio360placerville](#)

360 Main Street • 530-295-0360 • [artstudio360.net](#)

Open: 7 Days 10:30am - 5:30pm & 10:30am - 8pm & Every Third Saturday

9 Gold Country Artists Gallery

Founded in 1992, Gold Country Artists Gallery is a thriving cooperative featuring over 45 local award-winning artists. Our two-story gallery is housed in a striking historic 1850s building and maintains a relaxed, friendly atmosphere for visitors from all over the world.

379 Main Street • 530-642-2944 • [goldcountryartistsgallery.net](#)

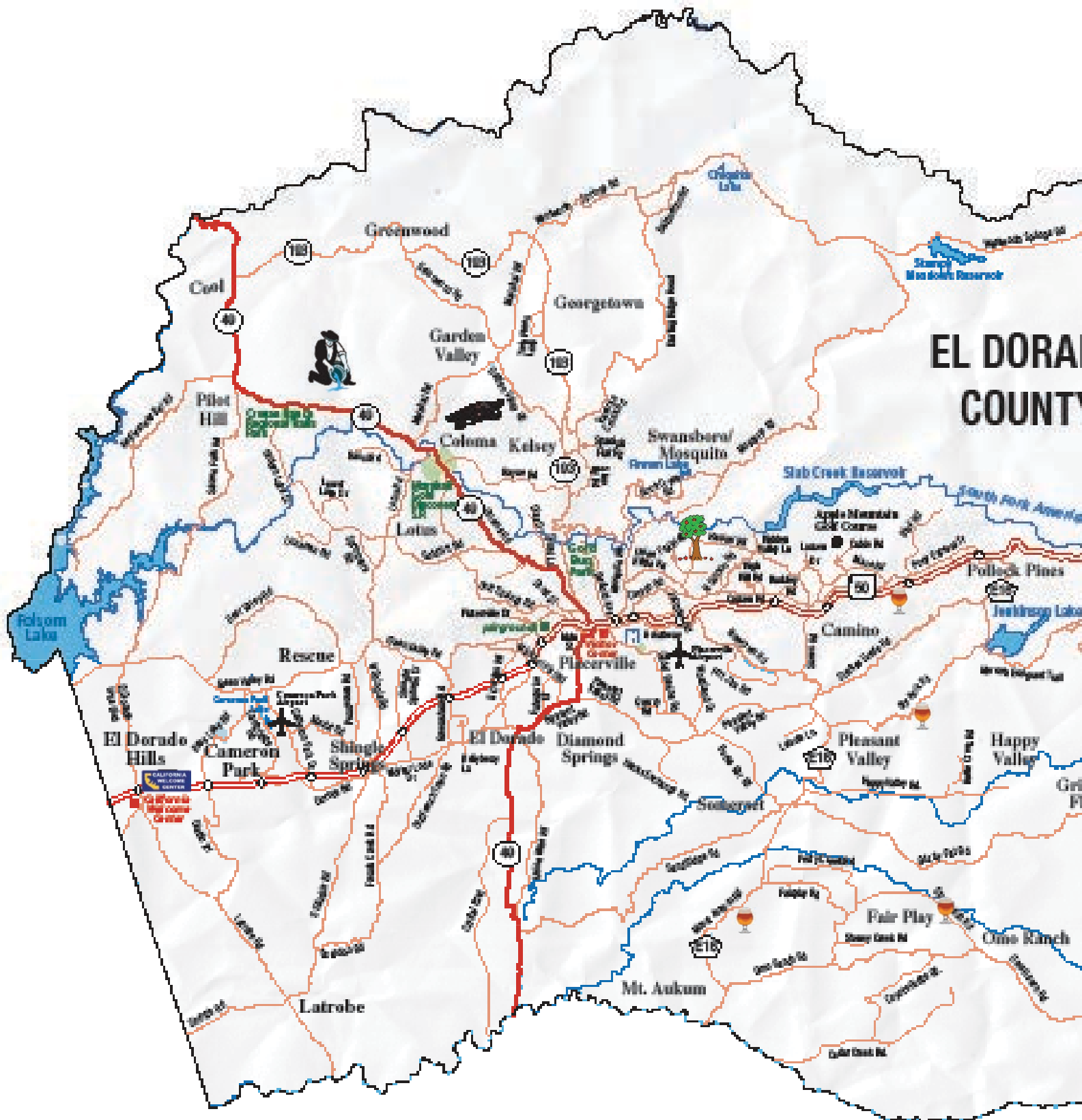
Open: 7 Days

VISITOR'S CENTER

20 El Dorado County Visitor's Center

Stop by for FREE maps and helpful information to plan your visit! 542 Main Street • 530-621-5885 • [visit-eldorado.com](#)

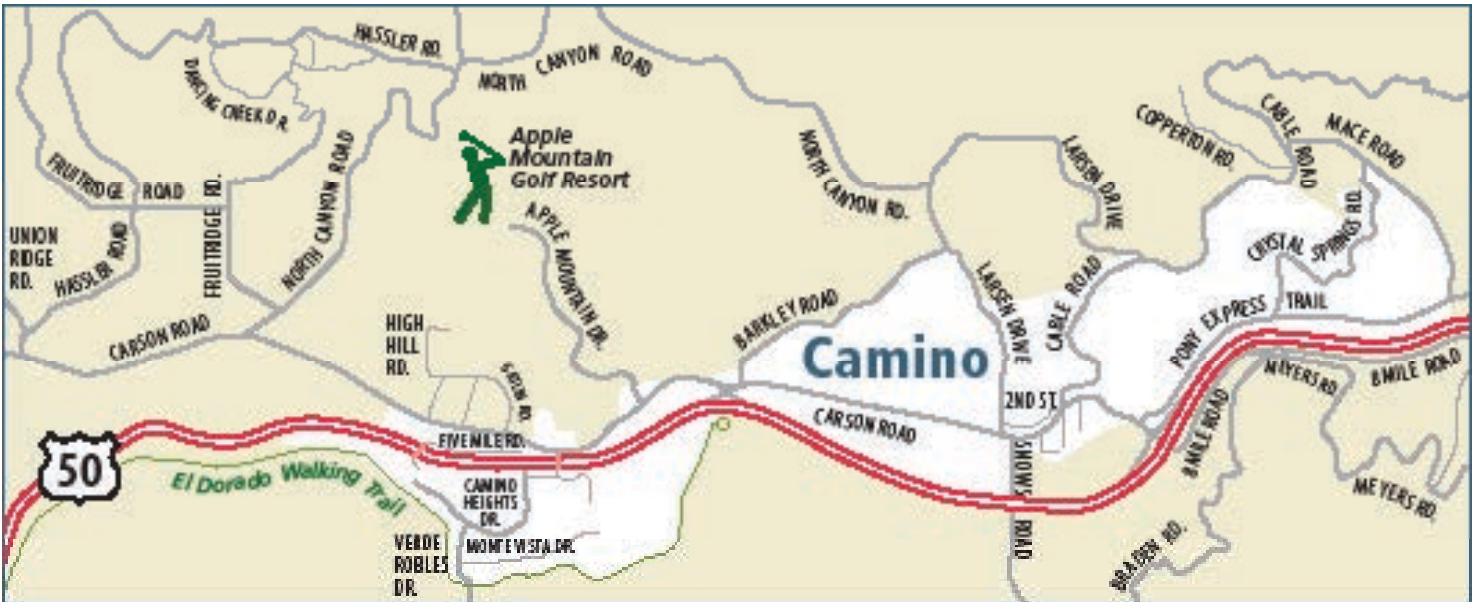
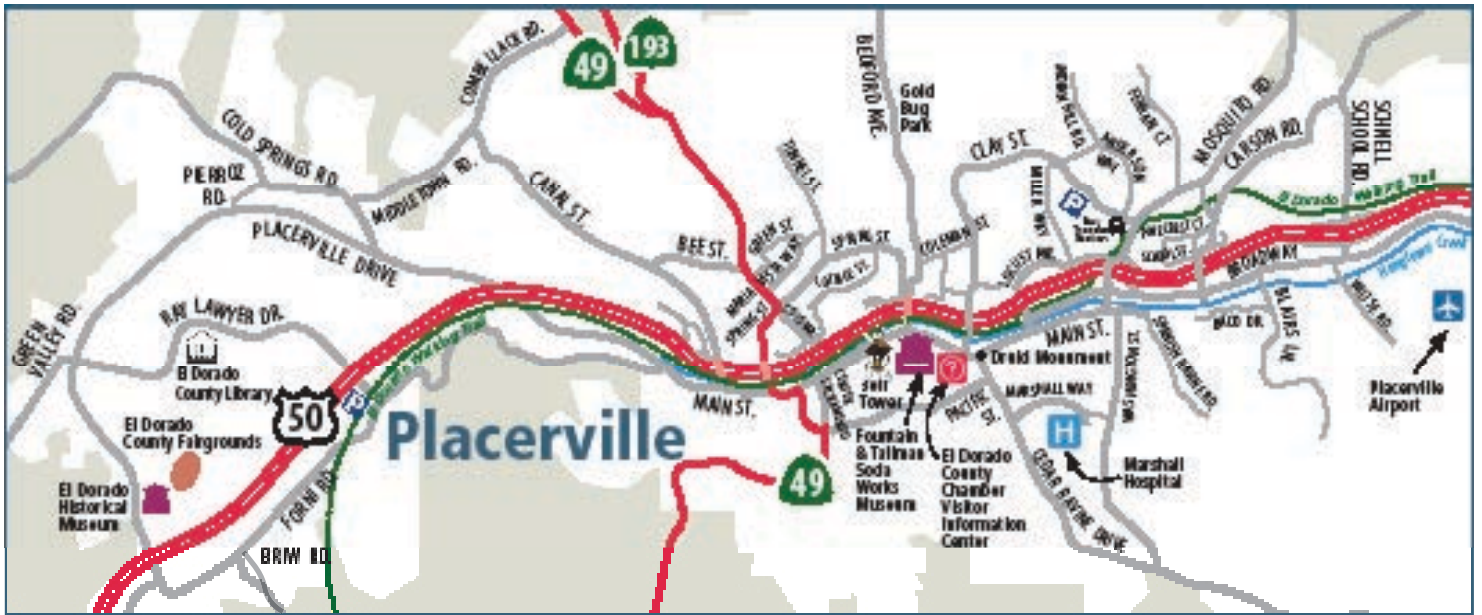
Open: Mon – Fri



EL DORADO COUNTY



Desolation Wilderness Area





*Come Join Us For Family Fun
At Our Family Ranch.*



ACTIVITIES

Maze, Mining, Sand Art,
Pumpkin Patch, Crafters,
Photo Ops

(Weather Permitting & Weekends Only)



HOMEMADE GOODS

Baked Goods

Fresh Baked Pies, Apple Donuts,
Apple Fritters, Strudel, Dumplings,
Breads, Apple Cake, & More.

Candies

Fudge, Caramel Apples, & More.

Pantry

Apple Butter



LUNCH

Terri's Country Cuisine



Located At:

2345 Carson Road
Placerville, CA 95667



For More Info. Please Visit:

abelsappleacres.com

or Call (530) 626-0138

OPEN DAILY-8:30am to 5pm

Open Labor Day Weekend 9/3 to 12/23

Closed Thanksgiving & Christmas Eve
December Hours 9am to 1:30pm



FUDGE FACTORY FARM

FREE Samples
Always Available



- ♥ Handmade Fudge & Chocolates
- ♥ Over 27 Types of Candy Coated Apples
- ♥ Homemade Jams
- ♥ Fresh Baked Hand Pies
- ♥ Kids' Play Area & Farm Animals
- ♥ Raspberry, Blackberry, & Marion Berry Wine
- ♥ Fresh picked organic apples, raspberries, blackberries, & blueberries (when in season)

All made and grown here!

2860 High Hill Road, Placerville
(530) 644-3492 • www.fudgefactoryfarm.com

Open September 1 through mid December

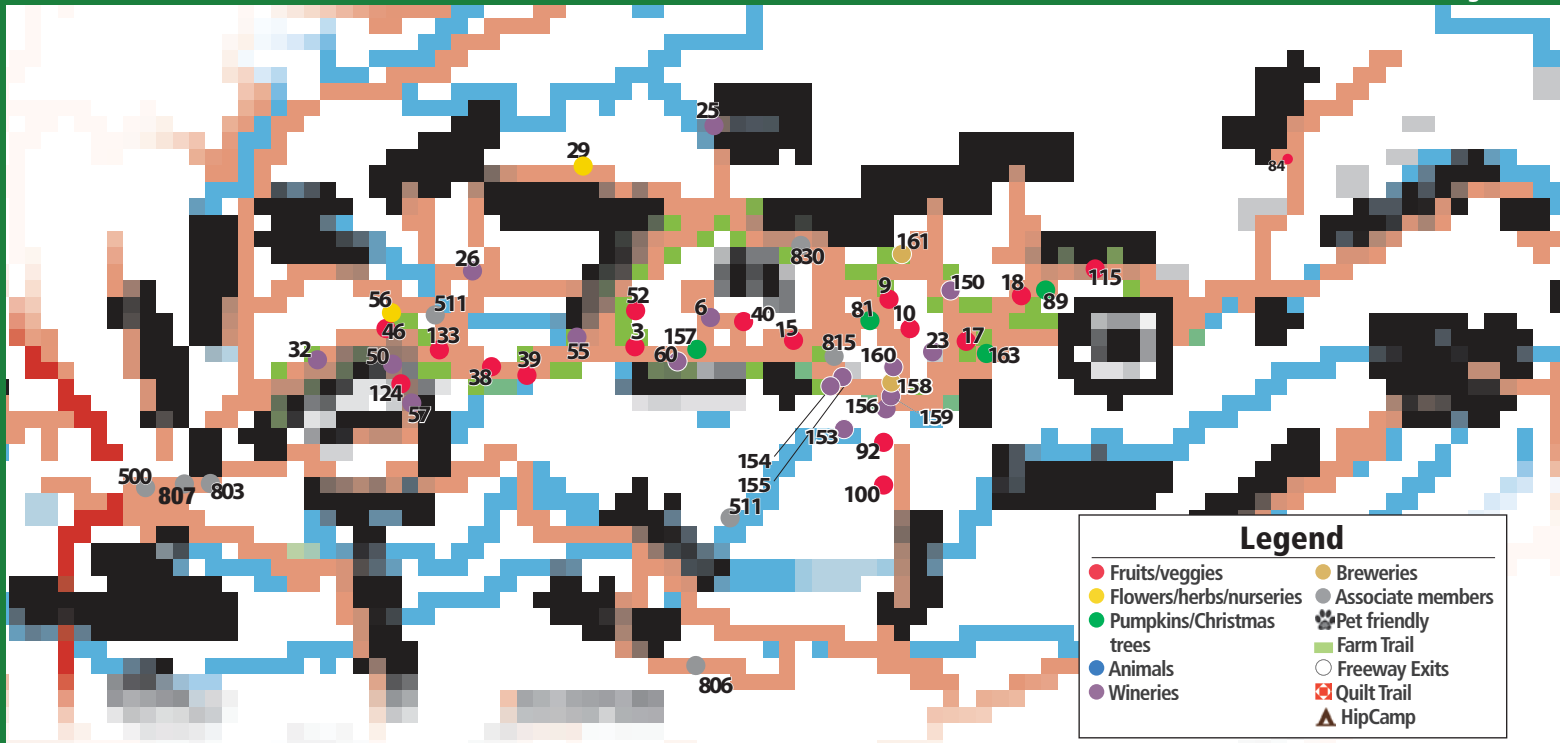


*Love
at first
bite!*

EAST EL DORADO COUNTY



FARM TRAIL LISTINGS



Legend	
● Fruits/veggies	● Breweries
● Flowers/herbs/nurseries	● Associate members
● Pumpkins/Christmas trees	● Pet friendly
● Animals	○ Farm Trail
● Wineries	○ Freeway Exits
	⊠ Quilt Trail
	▲ HipCamp

● #3 Boa Vista Orchards 🐾

2952 Carson Rd., Placerville. Fresh fruit & vegetables, Bakery, Deli, fresh Apple Cider, Pantry, wine tasting. Picnic area, extra parking. (Arts & Crafts weekends fall season only.) Open year round 7:30-5:30. Since 1915. Find us on Facebook. 530-622-5522. www.boavista.com www.facebook.com/boavista1915

● #6 Madroña Vineyards 🐾

2560 High Hill Rd., Placerville. Taste and appreciate our premium, estate-grown wines. Tasting daily 11-5. Picnic area. 530-644-5948. www.madronavineyards.com

● #9 Larsen Apple Barn & Bakeshop 🐾

2461 Larsen Dr., Camino. Come and visit the longest family-owned Apple Hill farm. You'll find over 20 varieties of apples along with pears, grapes, dried fruits, juices and more. Our bakery is full of treats! Specialty pies, turnovers, dumplings and much more. Daily lunches available from our deli. Visit the family Museum and park for a special adventure. Park available to rent. Sun-Fri 8-5, Sept 3-Dec 24. 530-644-1415. www.larsenapplebarn.com www.facebook.com/larsenapplebarn

● #10 Rainbow Orchards 🐾

2569 Larsen Rd., Blueberries, blackberries, nectarines, peaches, apples, pears, pumpkins, winter squash. Bake shop. Readers' Choice best donuts and best apple pie. Homemade jams, jellies, syrups, butters. Cider Mill on site. Fresh cider, hard cider, and wine. Tasting on weekends in Sept./Oct./Nov. Picnic and play area with hay bale hop a crooked mile. Open Sept.-Dec. For dates, hours, and availability of product call 530-644-1594, check Rainbow Orchards Facebook or rainboworchards.net or email rainboworch@gmail.com

● #15 Rockney Farms

2800 Barkley Rd., Camino. Naturally grown produce in the heart of Apple Hill. Emphasis on plant and soil health using natural products without the use of any pesticides. Fresh vegetables available at our farm stand and Main Street Farmers Market in Placerville on Wednesday Evenings. CSA's available. Farm Stand hours: Sunday 10-3, Tuesday 12-5, Friday 12-6. CSA's available. 530-919-0022. www.facebook.com/rockneymfarms

● #17 Grandpa's Cellar 🐾

2360 Cable Road, Camino. BAKING FROM THE HEART: Grandpa's Cellar is unlike any other orchard in the area. Get a slice of our apple pie and enjoy it under our 100 year old apple trees! We are a seasonal bakery that specializes in pies, seasonal baked goods and specialty jams, jellies, and much more. We are also the only bakery that offers Gluten-Free baked treats! New this season we will have our Coffee Flights!!! We want to have all our customers to feel at home at our farm and to love it as much as we do! 530-644-2153. Email: grandpacellar17@gmail.com www.grandpacellar.com

● #18 O'Halloran's Apple Trail Ranch 🐾

2261 Cable Rd., Camino. We offer a variety of activities for the whole family that last from early September through the holidays. We hope you'll stop in for a visit and taste our crisp, juicy apples and tree-ripened pears. We offer U-PICK apples, blackberries, and pumpkins right off the vine! Visit our farm animals. We also have Indian corn and winter squash. And, if you're looking for the perfect Christmas tree, we have seven varieties of quality trees to choose from. Hike through our nature trail, enjoy fresh apple juice or a cold beer, picnic in the orchard. We look forward to seeing you! 530-644-3389. www.ohalloranranch.com

● #23 Hidden Star Camino

2740 Cable Rd., Camino. Tasting room pouring 16 varieties of craft made hard ciders. Juices. Jarred goods. Bakery. Kids play area. Picnic tables. Gorgeous view. Special events. 530-622-6885; 209-483-8990. www.hiddenstarcamino.com. Email: hiddenstarcamino@gmail.com www.facebook.com/hiddenstarcamino

● #25 Wofford Acres Vineyards 🐾

1900 Hidden Valley Lane, Camino. Premium wine tasting, beautiful picnic grounds. Hard Apple Cider. Open Sat. & Sun. year round. Call for weekday hours. 530-626-6858. Email: info@wawwines.com www.wawwines.com

● #26 Lava Cap Winery & Vineyards 🐾

2221 Fruitridge Rd., Placerville. Wine tasting room with fabulous views and picnic grounds overlooking the vineyards. Open daily 10-5, except major holidays. 530-621-0175. Email: info@lavacap.com www.lavacap.com

● #29 High Sierra Iris & Wedding Gardens 🐾

3170 Hassler Rd., Camino. Beautiful garden wedding venue May-October. Iris garden open late April - May. Christmas tree farm opens Thanksgiving weekend. Blue Spruce, Noble Fir and Swift Silver Fir. 530-642-1222. Email: nancyvisman@gmail.com www.weddingsnflowers.com

● #30 Barsotti Family Juice Company

2239 Hidden Valley Lane, Camino. Freshly pressed juices, lemonades and ciders. Look for our juices at Apple Hill™ ranches and in the produce section of your local supermarket. Wholesale only. 530-622-4629. www.barsottijuice.com

● #32 Boeger Winery 🐾

1709 Carson Rd., Placerville. Wine tasting all year round. Picnic area, blacksmith shop. Open 10-5 daily. 530-622-8094. www.boegerwinery.com

● #38 Abel's Apple Acres 🐾

2345 Carson Rd., Placerville. Apples, Cider, Bake Shop, Fudge, Caramel Apples, Café, Gift Store, Craft Faire, Horse/Pony Rides, Hay Maze, Pond Area. Open Labor Day Weekend to Christmas Eve. Fall hours: 8:30am-5:30pm, Winter hours: 8:30am-5pm, Christmas Eve hours: 9am-noon. 530-626-0138. Email: info@abelsappleacres.com www.abelsappleacres.com

● #39 Goldbud Farms

2501 Carson Rd., Placerville. Open July 1 - Dec. 20. Peaches, nectarines, plums, pluots, pears, apples & grapes. 530-626-6521. Email: info@golddbudfarms.com www.golddbudfarms.com

● #40 Fudge Factory Farm 🐾

2860 High Hill Rd., Placerville. We have lots of candy including homemade chocolates. Fudge tasting. Organic Apples, Raspberries, Blueberries, Blackberries. Apple, Raspberry and Blackberry wines. 27 different kinds of candy coated apples, fresh pies and baked goods. Choose and cut Christmas trees. Picnic area and child play area. Open Sept. - Mid December. 530-644-3492. www.fudgefactoryfarm.com

● #46 Collina di Mela

Carson Rd., Placerville. Experience the pinnacle of organic olive oil with our CCOF certified oil. Milled organically by McEvoy Ranch, our hand-sorted Tuscan varieties have been certified extra virgin by the CCOF after undergoing sensory and chemical testing. We are proud members of Apple Hill Growers, bringing you the finest from the Sierra Foothills. 530-417-1942. Email: heirloom586@gmail.com www.collinadimelaoliveoil.com

● #50 Fenton Herriott Vineyards 🐾

120 Jacquier Ct., Placerville. Fenton Herriott Vineyards is located in the Northern Sierra Foothills of El Dorado County in historic Apple Hill™. Enjoy our wines while taking in the beautiful views and playing a little bocce ball. Because we have long held a great passion we chose to plant our vines amidst the steady sun and rich soil of Placerville. We believe that our sincere appreciation for the noble grape is reflected in the complex yet definitely drinkable wines that we create. Open daily 11-5. 530-642-2021. www.fentonherriott.com

EL DORADO COUNTY FARM TRAILS

EAST EL DORADO COUNTY



FARM TRAIL LISTINGS

● #52 El Dorado Orchards

2888 North Canyon Rd., Camino. Eldorado Orchards annual harvest fair begins the third weekend in September and continues through the weekend after Thanksgiving. A great place to spend the day with your family enjoying crafts, fruit and pastries, great food, picnic area and the Apple Ridge Express train. A family favorite for 46 years. The weekend after Thanksgiving we open our choose and cut Christmas tree lot with beautiful Noble and Nordman firs and handmade wreaths. 530-622-5522. www.eldoradoorchards.com

● #55 Lewis Grace Winery

2701 Carson Rd., Placerville. Located on a scenic historic ranch that includes a landmark red barn and restored 1885 ranch house. Guests are invited to savor full-bodied reds in a dramatic vineyard setting. Open Daily, 11-5. 530-642-8424. Email: gracepatriotwines@gmail.com. lewisgracewinery.com

● #56 Bluestone Meadows

2025 Carson Rd., Placerville. Bluestone Meadow is a lavender and wedding venue providing a unique setting for your special day. Our Lavender Farm provides U-pick opportunities, craft making and lavender products. Open last two weekends in June for our Lavender Festival. Make reservations on our website. Open June 19, 20, 26, 27, 10am-4pm. 530-621-1830. www.bluestonemeadow.com

● #57 Starfield Vineyards

2750 Jacquier Rd., Placerville. At Starfield we believe great wines come from "Star Fields" — vineyards where grapes develop the optimal balance of aroma, flavor and texture. Our Sierra Foothills estate is such a site. The tasting room overlooks historic Smith Flat, just off Exit 49 from Hwy 50, and offers stunning views, nature trails, amphitheater, lake & pavilion, two ponds, rose arbor and acres of rhododendrons, dogwoods, daffodils, wild roses, aspen, maples and more! 530-748-3085. www.starfieldvineyards.com www.facebook.com/StarfieldVineyards

● #60 Rucksack Cellars

3030 Carson Rd., Placerville. Comfortable and worn, a rucksack embodies our desire to discover life away from the ordinary. It is with this same spirit of discovery that we produce our wines, each an expression of the varied climate and soils of the Sierra Foothills appellation. Open May-Dec Thu/Sun 11-5. Check website for additional hours. 530-647-2113. www.rucksackcellars.com

● #81 Madrone Tree Hill

2600 Barkley Rd., Camino. Family owned since the 1960's, Madrone Tree Hill is a 40 acre tree farm with some of the tallest Christmas Trees around. Wander our forest, and choose & cut your perfect tree; or simply pick one of the trees we have pre-cut for your choosing. Hike our miles of trails, get lost in the Black Forest or simply relax by the campfire. Planning an event, choosing from on our nature venues. Visit our website for more information. 916-933-9680. www.madronetreehill.com

● #84 Harris Family Farm

2640 Blair Rd., Pollock Pines. Visit our historic peaceful farm. U-pick blueberries and blackberries July-August. U-pick apples starting in Sept. U-pick pumpkins in Oct. Our Pie shop offers mini apple cider donuts, pies & turnovers, jams, fruits & vegetables, fresh eggs, Picnic area, nature trail, kids activities. Choose and Cut Christmas trees, wreaths. Camping April-Oct. through Hipcamp.com. Check our website for events. Farm is open June-Dec 24 Thurs-Sun 9-4:30 & Monday Holidays. 530-644-2194. www.harristreefarm.com

● #89 Crystal Creek Tree Farm

2019 Cable Rd., Camino. Eight varieties of trees. Freshly made wreaths. Wooded setting with picnic area, Open November 23 until sold out. 9am to dusk/4:30pm. Closed Thanksgiving Day. Visit our website for more information 530-417-6096 or 530-417-6097. www.caminotrees.com

● #92 Generation Ranch

3600 US HWY 50, Camino. Generation Ranch is a family owned and operated farm offering Christmas Trees (heritage, fresh cut, choose and cut), freshly made wreaths, pony rides, cattle, chickens, heirloom/non-GMO pumpkin patch, fresh flowers, and seasonal vegetables. Our ranch has hiking trails, and stunning outdoor event spaces for weddings and non-profit events; very limited availability for events. Reservations required off-season. Check Facebook, Instagram, and Google for up to date seasonal hours. 530-647-1568, or email generationranchcamino@gmail.com www.generation-ranch.com

● #100 Rainbow Camino Ridge

3010 Snows Rd., Camino. Snows Rd. at Fuji Court. You-Pick or We Pick blueberries. Open weekends mid-June to Mid-July. For days and hours open, availability of berries, and special events, check Rainbow Orchards facebook or www.rainboworchards.net, call 530-644-1594, or email rainboworch@gmail.com

● #115 Hangtown Kid Apple Orchard

2598 Mace Rd., Camino. U-Pick apples, pears & persimmons. Call for ripening dates. Also, chestnuts, honey. Call for ripening dates. Thurs - Sun, 10-5, mid-Sept to Thanksgiving. Call for M-W hours. Daily Nov. 24 thru Dec. 10 530-647-1810. www.hangtownkid.com

● #124 24 Carrot Farm

2731 Jacquier Rd., Placerville. We grow organic fruits and vegetables on 13 acres in the Apple Hill™ grower area. We are actively restoring the land and operating with passion and ethics. Come visit our farm stand, pumpkin patch, u-pick apple orchard, sign up for our CSA or send us a message! May-Aug. Thu-Fri. 2-7pm; Sat-Sun 10am-5pm; Sept-Nov DAILY 10am-5pm. 510-828-6538. www.facebook.com/24carrot

● #133 Smokey Ridge Farmstand & Winery

2160 Carson Rd., Placerville. Tree ripened apples, chestnuts, U-pick apples & flowers; gourmet preserves, wine. Event and wedding rental available. Open May-Aug, Sat-Sun 11am-5pm. Sept-Nov, Fri, Sat, Sun 9am-5pm. 530-626-5077. www.smokeyridgeranch.com

● #150 Via Romano Vineyards

2875 Larsen Dr., Camino. Via Romano Vineyards is a premier El Dorado wine country experience! We are located in the heart of Apple Hill and the El Dorado Gold Country at the Biama Vineyards in Camino. With glorious views of the foothills of the Sierra and our vineyards in the foreground. Come and enjoy award-winning wines and meet the family. Winter Hours 12-5 Thursday - Monday, Spring & Summer & Fall Hours 12-5 Daily. 530-269-9463. www.vrv.vin www.facebook.com/viaromanovineyards

● #153 Chateau Davell Winery

3020 Vista Tierra Dr., Camino. Chateau Davell is a family-run boutique winery, vineyard and farm. We focus on healthy farming and grow pumpkins, vegetables, heirloom tomatoes and also offer a picnic area. Our cozy tasting room in Camino is open daily 11-5. 530-644-2016. www.chateaudavell.com

● #154 diVittorio Winery

3500 Carson Rd., Wine Plaza, Camino. A family-owned business, Al & Sally are the winemakers and all the grapes are locally grown in El Dorado County. Try our great Ports and fine red wines. 530-621-2166 Fax: 530-626-8941. www.divittoriowinery.com

● #155 Findleton Estate Winery

3500 Carson Rd., Camino. Open 7 days a week 11-5 year round at Carson Road exit in Camino. Gold medal wines, original artwork, barrel tasting, picnic area, and summer music events. Tasting room: 530-644-4018. Office: 530-644-0714. www.finzinwines.com

● #156 Bumgarner Camino Wine Tasting Room

3550 Carson Rd., #8, Camino. Visit Bumgarner Winery's Camino tasting room to experience our exquisite selection of award winning wines including world class white wines, big, bold, and beautiful red wines and artisanal hard ciders. Conveniently located just off Carson Rd., open daily 11-5 pm for tasting, by the glass, bottle service, and seasonal events. 530-303-3418. www.BumgarnerWinery.com

● #157 Carson Ridge Evergreens

3041 Carson Rd., Placerville. Choose & Cut Christmas trees, wreaths & greenery. Open day - Saturday before Thanksgiving until sold out. 9am - dark. 530-644-1490. Email: carsonridge@hotmail.com. www.carsonridgeevergreens.net

● #158 Hwy 50 Brewery

3544 Carson Rd., Ste 20, Camino. A family-friendly brew pub experience featuring craft beers, pizza and housemade foods. Come enjoy the firepits and beautiful views from our dog-friendly patio. OPEN 7 Days a Week, 12 - 8pm; Christmas Eve: 12 - 4pm, Christmas Day: Closed; New Year's Eve & New Year's Day: 12 - 8pm. 530-556-5060. www.hwy50brewery.com

● #159 Nello Olivo Winery

3544 Carson Rd., Ste 10, Camino. Excellent Italian styled wines. Apple Hill "Destination Location," outdoor tasting, views of orchards, vineyard, forested hills. Craft beer, pub foods, Family & dog friendly. Daily 11-7. 530-303-3617. www.nelloolivo.com

● #160 Crystal Basin Cellars

3500 Carson Rd., Camino. Crystal Basin Cellars creates award-winning, flavorful wines exclusively from El Dorado County grapes. Our hospitality is unmatched. We're simply the most fun winery anywhere! Open 7 days at 11am. 530-647-1767. Email: sales@crystalbasin.com www.crystalbasin.com

● #161 Jack Russell Farm Brewery

2380 Larsen Dr., Camino. Open year round proudly serving Ale's, Lagers, Hard Ciders, and Meads. We grow hops, blueberries, blackberries, and apples. Awesome beer garden. M-F 11am to dusk and Sat-Sun 10am to dusk. 530-647-6222. <http://jackrussellbrewery.com>

● #163 Smarts Christmas Tree Farm, Inc.

4401 Pony Express Trail, Camino. Choose & Cut Christmas trees - open day after Thanksgiving till sold out. 14 acres of Silver Tip, White Fir, Noble Fir, & Douglas Fir. Cash and credit cards accepted. Please see our facebook page for hours of operation. 530-401-4019. www.facebook.com/SmartsChristmasTrees

● #500 Main Street Farmers Market

574 Main St., Placerville. A quaint certified farmers' market specializing in local produce and goodies. Every wed. evening 4 to 8ish June thru October. <http://www.edc-farmtrails.org/farmers-markets> www.facebook.com/edcfarmersmarket

● #511 Ponderosa Ridge a Bed & Breakfast

2360 Union Ridge Rd., Placerville. A delightful Bed & Breakfast nestled on 11 acres, with an apple orchard guests only can pick. Outside firepit, dining table and fireplace. Every room has their own private bath. 530-344-9220. www.ponderosaridgebnb.com

● #803 Ruth Carter - Hangtown Real Estate - 1st Choice Realty & Associates Inc.

1166 Broadway, Suite L, Placerville. Locally owned and operated. We care about El Dorado County. We bring the experience needed to expertly guide you. Your home sold guaranteed! 916-968-1627. Email: RealtyTeam916@gmail.com. www.SoldBy1stChoice.com or www.HangtownRealEstate.com

● #806 The Davies Family Inn at Shadow Ridge Ranch

3700 Fort Jim Rd., Placerville. Our Bed and Breakfast Inn preserves the rustic elegance of an 1800s era log cabin homestead with modern conveniences in a setting both revitalizing and tranquil. Our events center offers a large meadow for outdoor weddings. Christmas trees, apples, gift shop, pumpkins. 530-295-1000. www.daviesfamilyinn.com

● #807 Sweet Pairings aka Gracies Coffee & Bakeshop

681 Main St., Unit L3, Placerville. Indulge in a delectable array of homemade delights, accompanied by locally sourced coffees and teas. Delight your senses with our exquisite selection of cookies, scones, fritattas, and muffins. You'll feel right at home at this local coffee & bake shop. Locally owned & community minded. Homemade treats, and espresso drinks all within a historic Placerville building at the end of Main Street. Mon-Fri 8am-3pm. 530-903-3158. graciescoffeeandbakeshop.com www.sweetpairingsbakery.com

● #815 Apple Mountain Golf Resort

3455 Carson Rd., Camino. Restaurant breakfast & lunch, banquet facilities available. 18 hole course. Practice facilities. Breathtaking views. Open Year Round. 530-647-7400 ext. 224. Email: rosem@applemountaingolfresort.com. www.applemountaingolfresort.com

● #830 North Canyon Inn Bed & Breakfast

3901 North Canyon Rd., Camino. Luxury bed and breakfast in the heart of the Apple Hill™ Growers Area. 3 rooms, 8 person maximum, king beds, walk in showers, spa tub, fireplace (amenities vary by room), complimentary gourmet breakfast, wine and evening sweet treat. Beautiful rural setting. 530-957-6952. www.northcanyoninn.com

● #840 HipCamp

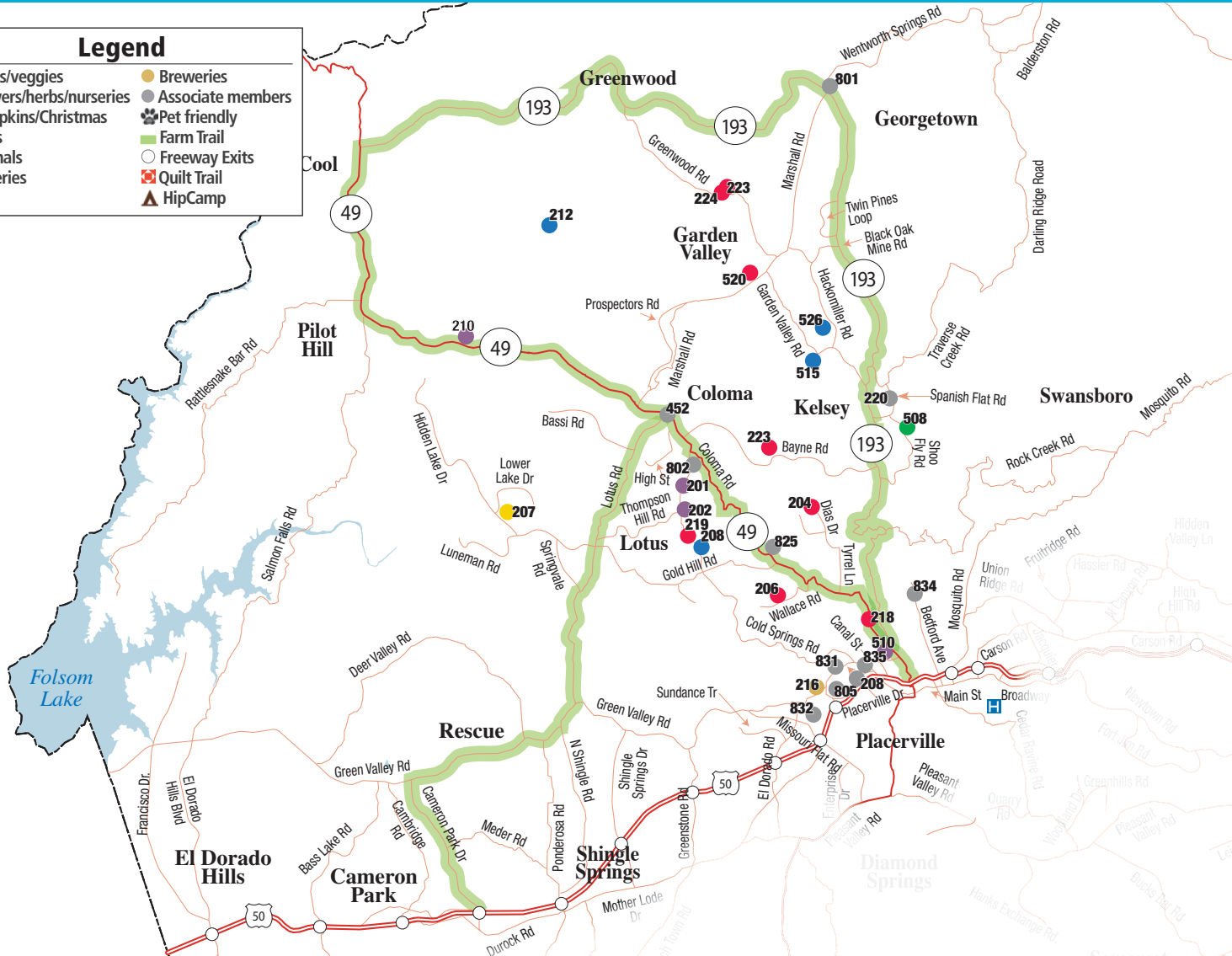
Discover unique camping experiences on ranches, nature preserves, farms, vineyards, and public campgrounds across El Dorado County and the US. Look for the tent icon on members listing. www.hipcamp.com

NORTH/WEST EL DORADO COUNTY



FARM TRAIL LISTINGS

Legend	
● Fruits/veggies	● Breweries
● Flowers/herbs/nurseries	● Associate members
● Pumpkins/Christmas trees	🐾 Pet friendly
● Animals	🌿 Farm Trail
● Wineries	○ Freeway Exits
	🏠 Quilt Trail
	🏕️ HipCamp



- **#201 Gold Hill Vineyard & Brewery** 🐾
5660 Vineyard Lane, Placerville. Wine & beer tasting. Chardonnay, Cabernet Sauvignon, Cabernet Franc, Merlot, Syrah, Barbera, Zinfandel, Viognier. Picnics, weddings, parties. Spectacular views. Year round, Thurs.-Sun., 10-5. 530-626-6522. www.goldhillvineyard.com
- **#202 David Girard Vineyards** 🐾
741 Cold Springs Rd., Placerville. Wines, grapes, winery picnic area, weddings. Open Thursday through Monday 11 - 5. Please call for an appointment. 530-295-1833. Email: tastingroom@davidgirardvineyards.com. www.davidgirardvineyards.com
- **#203 Yellow Button Bakery**
Shingle Springs. Full service dedicated gluten free bakery. We make cakes, cookies, breakfast treats, loaf breads. Look for us at local farmers' market. 530-644-1800. Email: yellowbuttonbakery@gmail.com
- **#204 American River Cherry Co.** 🐾
2240 Dias Dr., Placerville. U-Pick Cherries: Bing, Regina, Tietan, Skeena, Summit, Rainier. U-Pick Berries: Raspberries, Boysenberries, Olallieberries, Siskiyouberries, Blueberries, Loganberries, Marionberries. Local mountain honey, picnic area, koi pond. 530-748-9957. www.americanrivercherryco.com
- **#206 Hooverville Orchards** 🐾
1101 Wallace Rd., Placerville. OPEN YEAR ROUND-DAILY! Bake Shop has pies, jams, jellies, ice cream. Beautiful picnic grounds. Seasonal Tree Ripened fruits: cherries, berries, peaches, nectarines, plums, pluots, asian pears, apples, mandarins, oranges! 530-622-2155. Email: hoovervilleorchards1@gmail.com www.hoovervilleorchards.com
- **#207 Lotus Bonsai Nursery and Gardens** 🐾
1435 Lower Lake Dr., Placerville. A full service Bonsai nursery offering Bonsai, stock plants, supplies, gifts. Bonsai classes & workshops, fieldtrips. Annual sale last weekend of May. Call for appointment 530-622-9681. Email: scottchad@lotusbonsai.com. www.lotusbonsai.com

- **#208 UC Master Gardeners of El Dorado County, Sherwood Demonstration Garden**
311 Fair Lane, Placerville. UC Master Gardeners teach sustainable landscape, garden education and integrated pest management to the public through the Sherwood Demonstration Garden, classes, workshops, field trips and public outreach. 530-621-5532. Email: mgeldorado@ucanr.edu tbcelio@ucanr.edu www.lotusbonsai.com
- **#210 Everhart Cellars & Hart 2 Hart Vineyards** 🐾
5821 State Highway 49, Pilot Hill. Winery, Gift Shop, Weddings, Events and Vacation Home. Experience our handcrafted proprietary blends, estate varietal wines and exceptional hospitality. Open Thurs.-Sunday, 11:30-5:30. 530-885-9463. www.hart2hartvineyards.com
- **#212 Lewis Cattle Company**
All Natural Grass Fed & Finished Angus Beef. We sell 1/4, 1/2 or whole interests. Located five miles Northwest of Coloma in El Dorado County's historic gold country. 530-306-9828. Email: lewisranch33@yahoo.com
- **#215 Duarte Georgetown Vineyards**
Georgetown Divide. High elevation premium wine grape vineyard, currently not open to the public. 209-531-8898. alexandra@duartenursery.com
- **#216 Geartooth Alewerks**
7553 Green Valley Rd., Placerville. We are a small-batch brewery and restaurant, featuring award-winning craft beers and a southern inspired menu with BBQ offerings smoked on-site. Opening Spring. www.geartoothalewerks.com
- **#218 Beals' Orchard**
2312 Coloma Rd., Placerville. Family operated orchard, growing all stone fruit, peaches, plums, nectarines, pluots, persimmons, figs, pears, apples, pomegranates, rhubarb. Find us at local farmer's markets. 530-409-5146. www.facebook.com/BealsOrchard

EL DORADO COUNTY FARM TRAILS

NORTH/WEST EL DORADO COUNTY



FARM TRAIL LISTINGS

● #219 Wakamatsu Farm

941 Cold Springs Rd., Placerville. Owned by the American River Conservancy (ARC), Wakamatsu is an historic farm still in production. This 272-acre farm offers sustainable agricultural practices, cultural and historical interpretation, land stewardship, and educational and recreational opportunities. The 1st Japanese colony in the USA settled here in 1869 to grow tea and silk worms. ARC leases acreage to resident farmers who sell products onsite. Contact ARC for program schedules. 530-621-1224. ARConservancy.org/wakamatsu and ARConservancy.org/events www.facebook.com/WakamatsuFarm

● #220 Reverie Retreat

5760 Spanish Flat Rd., Garden Valley. Reconnect, restore, and rejuvenate at Reverie Retreat. The 32-acre property features a guest cottage and a vanishing-edge pool with stunning sunset views. 530-344-0439. www.reverieretreat.com www.facebook.com/ReverieRetreat CA

● #223 Wild Oak Family Farm

5314 Marigold Mine Way., Garden Valley. We're a regenerative agriculture farm located minutes from historic Coloma. We raise nutrient dense poultry and herbs utilizing nature's symbiotic relationships between plants and animals. Our organic pastured chickens and eggs, and herbal products are like what our grandparents knew. Come by for a taste, an education, or a farmstay! 805-458-2155. wildoakfamilyfarm@gmail.com

● #224 Jollity Farm Goat Dairy

5314 Marigold Mine Way, Garden Valley. Jollity Farm Goat Dairy is the only licensed dairy in El Dorado County. We milk the goats; we make the cheese, right here on the farm. Chevre, Garlic Dill, Goat's Milk Feta, Raw Milk Cheeses and Goata (goat's milk gouda). You are welcome to stop by the farm to visit the goats, feed them, watch milking, taste and purchase cheese, soaps and lotions at our "Tiny Store". We have picnic tables & seating if you can't wait to get your cheese home. We offer Farm tours by appointment. Baby-goat bottle feeding events in the spring only, by appointment. Call us to schedule private events. Open 9am-5pm daily. 530-444-0805. www.jollityfarm.net

● #501 Perez Farms

1160 Gold Hill Court, Placerville. Find me at all El Dorado County Farmers Markets. 530-306-6812.

● #508 North Star Tree Farm

5860 Shoo Fly Rd., Kelsey. Christmas trees – all sizes, many varieties, wreaths, garland, greenery. Walking trails, picnic areas. Closed Mondays. Open Tues.-Fri. 10-4; Sat.-Sun. 9:30-4:30. 530-622-3633.

● #510 Nello Olivo Wines

643 Bee St., Placerville. Excellent Italian styled boutique wines. Tastings in historic 1853 wine cellar, Sequoia Mansion. Small, intimate, friendly. Open Fri-Sun 11-5 (Camino location open daily). 530-409-5603. www.NelloOlivo.com

● #515 Irish Creek Ranch Camp & Retreat

5900 Garden Valley Rd., Garden Valley. HISTORICAL HOMESITE- Family owned since 1919. Cherries, peaches, apples, olives, garden vegetables and pumpkins available in season. 55 acres of natural park like setting with seasonal stream and pond. 916-799-1001. Email: irishcreekranch@gmail.com

● #520 Rustic Dream Farmstead

5170 Marshall Rd., Garden Valley. A bit of heaven at Marshall Rd./Veerkamp Rd. Farm includes U-pick blueberries, thornless blackberries, and raspberries as well as a variety of fruit trees. Farmstand - The Bluebarn. Call or text for hours. elizabethriseman@yahoo.com www.BerryHeavenUSA.com



Share your adventures...
#EIDoradoCounty
#Placerville

● #526 Cal*Tex Cattle Company

5700 Hackomiller Rd., Garden Valley. A local grower of all natural, grass-fed Angus beef. We sell quarter, half and whole interests in live beef and take care of all the details for you. 530-333-1980

● #801 American River Inn

6600 Orleans St., Georgetown. Located conveniently between Sacramento and Lake Tahoe. 13,000 square foot historic Victorian Mansion/B&B. Featuring elegant gardens, celebrated artwork, gorgeous Victorian decor. Hot Tub, fantastic breakfasts, evening social hour, & nature trails too. 530 333-4499. www.americanriverinn.com

● #802 Bella Vista Bed & Breakfast

581 Cold Springs Rd., Placerville. A luxurious hillside estate overlooking the Coloma/Lotus Valley and American River. 5 acres of ponds, streams, waterfalls, fountains, swimming lagoon and beach. Perfect wedding venue. 530-622-3456 or 530-919-4777. Email: kathleen@discoverbellavista.com. www.DiscoverBellaVista.com

● #831 Something MORE Artists Gallery

2460 Headington Rd., Placerville. MORE is a private non-profit whose vision is full inclusion for people with developmental disabilities. We have the full range of services and believe in joining other community partners to make this county a better place to live, work and recreate. 530-622-4848. www.more rehab.org

● #832 EDC Farm Bureau

2460 Headington Rd., Placerville. The El Dorado County Farm Bureau is a membership organization. Our mission is to "protect, promote and enhance the economic opportunities and long-term viability for El Dorado County farmers, ranchers, and foresters." Open Monday 10-4, or call for appointment. 530-622-7773. www.edcfb.com Email: admin@edcfb.com

● #834 Gold Bug Park and Mine

2635 Gold Bug Dr., Placerville. A historic mine in Placerville since 1848, owned by the City of Placerville. The park offers mine tours and gem panning. The Blacksmith Shop, Stamp Mill, Gift Shop and Museum as well as the Gold Bug Mine, are visited by thousands of visitors annually. Gold Bug Park and Mine is listed on the National Register of Historic Places and the California Point of Historic Interest. 530-642-5207. www.goldbugpark.org

● #835 El Dorado Growers Alliance

685 Placerville Dr., Suite 1024, Placerville. Representing El Dorado County Legal Commercial Cannabis Growers. 530-503-9078. www.eldoradogrowersalliance.org

● #840 HipCamp

Discover unique camping experiences on ranches, nature preserves, farms, vineyards, and public campgrounds across El Dorado County and the US. Look for the tent icon on members listing. www.hipcamp.com

AT MIRAFLORES WINERY

JOIN US FOR ONE OF OUR EVENTS

- ★ Summer Food & Wine Pairing Lunches
- ★ October: Futures Release Party
- ★ Bottle Your Own Wine
- ★ Complimentary Barrel Tasting

For event updates, see www.mirafloreswinery.com



#Humana Gemeral
Readers Choice

"Voted El Dorado County's
Best Winery
Eight Years in a Row!"





Since 2005, we are proud to say over 50 of our wines have been rated 90+ Points by Wine Spectator and Wine Enthusiast!



miraflores



OPEN DAILY 11am TO 5pm
MIRAFLORES WINERY
 2139 Four Springs Trail
 Placerville, CA 95667
 530-647-8340
www.mirafloreswinery.com

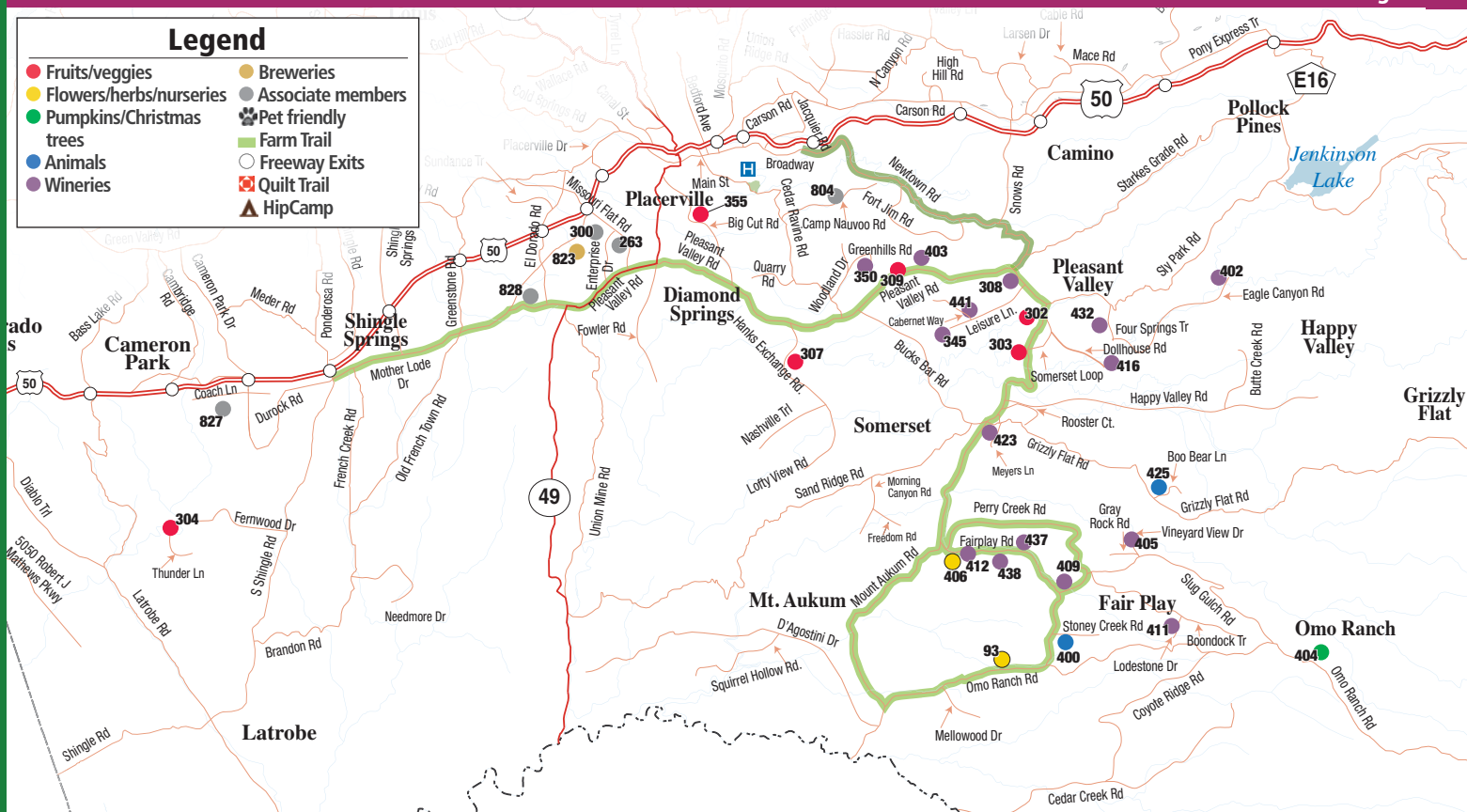
TASTINGS DAILY FROM 11AM-5PM

SOUTH EL DORADO COUNTY



FARM TRAIL LISTINGS

Legend	
● Fruits/veggies	● Breweries
● Flowers/herbs/nurseries	● Associate members
● Pumpkins/Christmas trees	● Pet friendly
● Animals	● Farm Trail
● Wineries	○ Freeway Exits
	⊠ Quilt Trail
	▲ HipCamp



- **#93 Windmill Creek Olive Oil** 🐾
Tasting Room: 2981 Omo Ranch Road, Mount Aukum. Come visit at the ranch for tasting and sales from locally grown olives, specialty foods and gifts. Open by appointment. 530-620-1089. www.windmillcrk@aol.com. www.windmillcreek.biz
- **#263 Placerville Fruit Growers, Inc.**
Vineyard and orchard supplies, large or small. Please call and get personal assistance for your questions. Fertilizers, pesticides, tools, trellising. Organics and conventional products available. Public welcome! Open weekdays 8:30-5, Sat. 9-1. 530-622-2643. www.placervillefruitgrowers.com
- **#301 Goldenwood Bee Co.**
918 Goldenwood Glen, Placerville. Local raw honey and swarm collection, Bee pollen, beekeeping supplies, beeswax. Call for product locations and farmers markets. 530-306-4487.
- **#302 Heavenly Ridge Farm**
6445 Heavenly Ridge Road, Placerville. Home of Let's Splash Soap. Family owned and operated. Featuring locally raised free range USDA chickens and fresh eggs. Open to the public by appointment only call 530-363-5889 or find us at our Local Farmers' Markets. 530-363-5889. www.heavenlyridgefarm.com
- **#303 Up Country Ranch** 🐾
5220 Mt. Aukum Rd., (E16), Placerville. O'Henry Peaches, Elephant Heart Plums, late Aug. to early Sept. Montmorency Cherries, mid June. Call or write for all dates, 530-409-6843 or upcountry1peaches.com beboggess@gmail.com
- **#304 Bella Branch at SE Ranch**
4800 Thunder Lane, Shingle Springs. We are a small family and veteran owned ranch in Shingle Springs. Bella Branch grows succulents and cactus. SE Ranch raises Llamas, Alpacas, Dward Nigerian, and Nubien goats. We also operate a small chicken hatchery with several types of pure bred chickens. We run a ranch store that is self-serve and shop at your own pace. We sell products from local crafters and vendors. 707-372-0761. bbsearanch@gmail.com www.facebook.com/BellaBranchatSERanch
- **#305 Cybele Holdings/The El Dorado Cannabis Company**
The first licensed and legal cannabis farm in EDC. We produce sun-grown, high end cannabis for medicinal and recreational use. You can find us in local dispensaries. 650-515-2484 www.eldoradocannabis.biz
- **#307 Historic Fausel Ranch**
4881 Hanks Exchange at Squaw Creek, Placerville. Freestone peaches, July-Sept. Beautiful outdoor wedding and reception venue. See our gazebo beside the creek. Call first. 530-622-4390. <https://www.facebook.com/fauselranchplacerville>
- **#308 Narrow Gate Vineyards** 🐾
4282 Pleasant Valley Rd., Placerville. Demeter certified Biodynamic® Estate vineyard and tasting cellar. Luscious whites, Rhone varietals/blends, Primitivo, Cabernet Sauvignon & home to Chocolate Splash! Friday/Saturday 11-5, Sunday 12-5, Some Monday Holidays, check our website for updates. 530-644-6201. www.narrowgatevineyards.com
- **#309 J K Cattle**
3482 Pleasant Valley Rd., Placerville. JK Cattle is a small family run beef cow/calf operation specializing in grass fed and grass finished beef. 650-743-6846. josh.jkcattle@gmail.com www.facebook.com/josh.jkcattle

- **#345 Holly's Hill Vineyards** 🐾
3680 Leisure Lane, Placerville. Come enjoy Rhone varietals in a serene retreat in the foothills of the Sierra Nevadas while overlooking the Consumes River canyons. Open daily, 10-5. 530-344-0227. www.hollyshill.com
- **#350 Field Number Fifteen** 🐾
4771 Green Hills Rd., Placerville. Field Number Fifteen is a winery and vineyard that grows organic Chardonnay, Zinfandel, Cabernet Sauvignon, Merlot and Barbera. 530-536-0621. www.fieldnumberfifteen.com
- **#355 Full Moon Farm**
3580 Big Cut Road, Placerville. Certified organic and biodynamic fruits and vegetables produced on a small family farm in the heart of Placerville. Find us at local farmer's markets. 916-580-9379. organicpanic@gmail.com
- **#400 Alpacas of Somerset Farm**
8226 Stoney Creek Rd., Somerset. Full-time, full-service alpacas ranch offering ranch tours (groups or individual), alpaca sales (breeding stock, pet/fiber/companion), herdsire services, and alpaca education/mentoring. Please call for an appointment. 530-744-7474. Email: djordan@live.com. www.alpacasofsomersetfarm.com
- **#403 Windrush Vineyard**
4831 Sigward Dr., Placerville. Nestled in the foothills of the Sierra Nevada mountains in Placerville, California, WindRush Vineyard and Farm is a 5 acre family run farm, host to a variety of farm products including wine grapes, free-range eggs, pumpkins, apples, berries, chestnuts, pears and honey. Open by appointment. 805-574-0372. www.windrushvineyard.com
- **#404 Fanchers Tree Farm**
6581 Omo Ranch Rd., Somerset. 62 Acres of Choose & Cut Christmas Trees, Silver Tip, Noble Fir, White Fir, Cedar & Doug Fir all sizes. Picnic area with fire pits & horseshoe pits. Fresh made wreaths. Free bough material, gift shop & snack bar. Hay rides. Open weekends only, 10am till dark. Cash or check only. 530-620-7179, 530-620-6252. www.facebook.com/Fanchers-Christmas-Tree-Farm
- **#405 Bumgarner Winery & Vineyards**
7380 Vineyard View Dr., Fair Play. 888-946-3286. www.bumgarnerwinery.com
- **#406 Bluebird Haven Ranch and Iris Garden**
6940 Fairplay Rd. Somerset. Retail iris rhizome sales. 4000 varieties, picnic tables, open 11 to 5 Wed. thru Sun. April 21 to May 20, 2024. Closed Rainy days. 530-620-5017. www.bluebirdhavenirisdgarden.com
- **#409 Cielo Sulla Terra Estate Vineyards and Winery**
8061 Perry Creek Rd., Fair Play. Our boutique winery specializes in small lots of ultra premium bordeaux and Italian varietals. Enjoy our gift shop & picnic area with views of the Sierras. Open Fri.-Sun. 11 - 5. 530-620-7474. Email: info@iversonwinery.com. www.iversonwinery.com
- **#411 Twin Oaks Vineyard**
8375 Lodestone Dr., Somerset. Premium Merlot mountain grown wine grapes of Sierra Foothills in Fairplay area. Grown in granite soils quadrilateral trellised at 2900 foot elevation. We usually have wineries buying Merlot grapes but we set aside some rows for home wine makers. 530-620-3510. www.twinoakswinegrapes.com

SOUTH EL DORADO COUNTY



FARM TRAIL LISTINGS

● #412 Shadow Ranch Vineyard 🐾

7050 Fairplay Road, Fairplay. We produce small batch, single vineyard wines from high elevation sites throughout El Dorado. We explore soil, climate and viticulture to illustrate the special characteristics that the geography imparts upon the wines we create. Open Thurs.- Mon, 11am to 5pm. 530-620-2785. www.shadowranch.com

● #416 Ursa Vineyards 🐾

5001 Dollhouse Rd., Placerville. We are a boutique winery offering red & white Sierra Foothills varieties. We are open by appointment only for intimate tasting in our cellar. 530-644-3443. www.ursavineyards.com

● #423 Cantiga Wineworks 🐾

5980 Meyers Lane, Somerset – 1/2 mile up Grizzly Flat Rd. Boutique family winery crafting classical-style, low-sulfite wines for the dinner table. Family-friendly, picnickers welcome! Fri.-Sat.-Sun 11-5. 530-621-1696. www.cantigawine.com

● #425 Alpacas of El Dorado

4535 Boo Bear Lane, Somerset. Sales of high quality Suri and Huacaya Alpacas. Fiber and pet companion animals periodically available. Full time ranch. Please call in advance. 530-642-8082. www.alpacasofeldorado.com

● #432 Miraflores Winery/Alvarez Vineyards 🐾

2120 Four Springs Trail, Placerville. Enjoy handcrafted wines of distinction in an area of gracious surroundings and natural beauty. Open daily, 10-5. Private events/tours by appointment. 530-647-8505. Email: matricia@miraflorwinery.com. www.miraflorwinery.com

● #437 Van der Vijver Estate

7451 Fairplay Rd., Somerset. We pride ourselves on old European traditions... wine & food made at slower pace with extra care to be enjoyed with laughter & friends. By appt. only. 530-409-7451. info@vdvwinery.com www.vdvwinery.com

● #438 Gwinllan Estate 🐾 *Call first before bringing dog.*

7060 Fairplay Rd., Somerset. Family owned and operated producing award winning wines. Zinfandel, Rhone blend, Chardonnay, Riesling, Muscat, Petite Sirah, Cabernet Sauvignon. Ridgetop views, picnic area. Events include dinners, wine tasting. 530-723-2879. www.gwinllanestate.com

● #441 Sierra Vista Vineyards & Winery

4560 Cabernet Way, Placerville. Sierra Vista Winery is named for the magnificent view of the Crystal Range of the Sierra Nevada and has been producing distinctive wines from estate grown grapes since 1977. The estate produces outstanding Cabernet Sauvignon, Chardonnay, Merlot, Syrah, Grenache, Mourvedre, Viognier, and Roussanne. We pride ourselves on our friendly atmosphere, great wines, and spectacular views! Open 7 days a week, check our website for hours. www.sierravistawinery.com Email: rhone@sierravistawinery.com

● #804 Camp Nauvoo ▲

2200 Camp Nauvoo Rd., Placerville. 86.5 Acres of Tahoe-like setting to relax, enjoy new friends, camping, glamping, reunions, & special events. Situated on year round Weber Creek. 916-207-9441. www.campnauvooplacerville.com

● #823 El Dorado Brewing Company 🐾

6051 Enterprise Dr. #102, Diamond Springs. Award winning Ales and Lagers on tap in our tasting room/pub. Growlers and bottles to go. Occasional music events. Open daily 12-6pm, Fridays till 8pm. 530-558-4188. www.eldobrewing.com

● #840 HipCamp ▲

Discover unique camping experiences on ranches, nature preserves, farms, vineyards, and public campgrounds across El Dorado County and the US. Look for the tent icon on members listing. www.hipcamp.com



"RESIDENTIAL, COMMERCIAL, AGRICULTURAL, VINEYARD, RANCH & EQUESTRIAN PROPERTIES"

Get to know your "hometown" Realtors!
As a local brokerage we have the experience and inside information to assist you with ALL of your real estate needs!

Local Brokers & Agents dedicated to building professional relationships through **Honesty and Integrity**

Scan to view properties

D'Agostini & Associates, Inc.
Real Estate
www.honestyandintegrity.com
(209) 245-5540 or (530) 317-2001
Member of the National Association of Realtors

Old World traditions...

Come and experience a winemaking style so old that it's new!

- Classical wines for the dinner table and cellar
- Exquisite wine & food pairings
- Natural, minimal sulfites
- Patio & gardens; families and picnickers welcome

Wine tasting Fri-Sun, 11-5 or weekdays by appt.
5980 Meyers Lane
Somerset, CA 95644
(530) 621-1696

1/2 mi. up Grizzly Flat Road from Somerset corner (E-16)

Cantiga Wineworks
WINERY & VINEYARD
www.cantigawine.com

PRODUCTS & ACTIVITIES



RANCH AND FARM DIRECTORY

Seasonal variations can occur.
Call ahead for accurate harvest information.

North/West Area

	MAP RANCH NUMBER	Alpacas / Wool	Apples / Cider	Apricots	Baked Goods / Food	Berries	Cherries	Christmas Trees	Citrus	Crafts / Gift Shops	Family Activities	Farm Stay / Camping	Figs / Persimmons / Kiwi	Honey / Preserves / Jams	Livestock / Meat	Lodging / Historic B & B	Nursery / Flowers	Nuts	Olives / Olive Oil / Tasting	Peaches / Nectarines / Plums	Pears	Picnic Area / Nature Trails	Pumpkins / Squash / Gourds	U-Pick Produce	Vegetables	Wine Grapes	Winery / Brewery / Distillery	Weddings / Events
American River Cherry Co.	204					•	•							•									•					
American River Inn	801						•				•					•							•					
Beals' Orchard	218		•										•								•							
Bella Vista Bed & Breakfast	802															•				•	•							•
Cal*Tex Cattle Company	526															•												
David Girard Vineyards	202																									•	•	•
Duarte Georgetown Vineyards	215																						•				•	•
Everhart Cellars & Hart 2 Hart Vineyards	210										•					•							•				•	•
Geartooth Alewerks	216				•																						•	•
Gold Bug Park and Mine	834									•	•												•				•	•
Gold Hill Vineyards & Brewery	201										•												•				•	•
HipCamp	840											•															•	•
Hooverville Orchards	206	•	•	•	•	•		•			•	•					•	•		•	•		•	•			•	•
Irish Creek Ranch Camp & Retreat	515					•						•			•	•							•	•			•	•
Jollity Farm Goat Dairy	224									•	•												•				•	•
Lewis Cattle Company	212										•				•								•				•	•
Lotus Bonsai Nursery & Gardens	207										•												•				•	•
North Star Tree Farm	508		•					•			•												•				•	•
Nello Olivo Wines	510																										•	•
Perez Farms	501																										•	•
Reverie Retreat	220										•	•				•										•		•
Rustic Dream Farmstead	520					•											•							•	•			•
Something MORE Artists Gallery	831										•																	•
Yellow Button Bakery	203				•																							•
Wakamatsu Farms	219									•	•			•												•		•
Wild Oak Family Farm	223				•							•		•	•		•											•

East Area

24 Carrot Farm	124	•																			•	•	•	•	•			
Abel's Apple Acres	38	•		•						•	•											•						•
Apple Mountain Golf Resort	815										•																	•
Barsotti Family Juice Co.	30	•																										•
Bluestone Meadows	56									•							•							•				•
Boa Vista Orchards	3	•	•	•	•	•		•		•	•		•			•	•	•	•	•	•	•	•	•	•	•	•	•
Boeger Winery	32																						•	•	•	•	•	•
Bumgarner Camino Wine Tasting Room	156				•																		•				•	•
Carson Ridge Evergreens	157							•																				•
Chateau Davell Winery	153																						•			•	•	•
Collina di Mela	46																•		•							•	•	•
Crystal Basin Cellars	160				•																						•	•
Crystal Creek Tree Farm	89							•															•				•	•
El Dorado Orchards	52	•		•				•		•	•		•									•					•	•
diVittorio Winery	154																						•				•	•
Fenton Herriott Vineyards	50										•												•				•	•
Findleton Estate Winery	155										•												•				•	•
Fudge Factory Farm	40	•	•		•	•		•		•	•								•				•				•	•
Generation Ranch	92					•		•								•							•				•	•
Goldbud Farms	39	•																		•							•	•
Grandpa's Cellar	17				•						•																	•
Hangtown Kid Apple Orchard	115	•						•				•	•						•			•					•	•
Harris Family Farm	84	•		•	•			•			•	•				•						•	•	•	•	•	•	•
Hidden Star Camino	23	•		•							•			•									•				•	•
High Sierra Iris & Wedding Gardens	29																											•
HipCamp	840											•																•
Hwy 50 Brewery	158				•																						•	•
Jack Russell Farm Brewery	161				•																						•	•
Larsen Apple Barn & Bakeshop	9	•		•							•			•					•		•	•	•	•	•	•	•	•
Lava Cap Winery & Vineyards	26																						•				•	•
Lewis Grace Winery	55																						•				•	•
Madroña Vineyards	6																						•				•	•
Madrone Tree Hill	81							•			•	•										•				•	•	•
Main Street Farmers Market	500	•	•	•	•	•				•		•	•					•	•	•	•			•			•	•
Nello Olivo Winery	159																										•	•
North Canyon Inn Bed & Breakfast	830																											•
O'Halloran's Apple Trail Ranch	18	•			•			•														•	•	•	•	•	•	•
Ponderosa Ridge a Bed & Breakfast	511																										•	•
Rainbow Camino Ridge	100				•					•															•			•

PRODUCTS & ACTIVITIES



RANCH AND FARM DIRECTORY

Seasonal variations can occur.
Call ahead for accurate harvest information.

EA (cont.)	MAP RANCH NUMBER	Product/Activity																											
		Alpacas / Wool	Apples / Cider	Apricots	Baked Goods / Food	Berries	Cherries	Christmas Trees	Citrus	Crafts / Gift Shops	Family Activities	Farm Stay / Camping	Figs / Persimmons / Kiwi	Honey / Preserves / Jams	Livestock / Meat	Lodging / Historic B & B	Nursery / Flowers	Nuts	Olive Oil / Tasting	Peaches / Nectarines / Plums	Pears	Picnic Area / Nature Trails	Pumpkins / Squash / Gourds	U-Pick Produce	Vegetables	Wine Grapes	Winery / Brewery / Distillery	Weddings / Events	
Rainbow Orchards	10		•		•															•	•								
Rockney Farms	15		•																										
Rucksack Cellars	60																												
Smarts Christmas Tree Farm Inc.	163																												
Smokey Ridge Ranch Farmstand & Winery	133		•		•																								
Starfield Vineyards	57																												
Sweet Pairings	807				•																								
The Davies Family Inn at Shadow Ridge Ranch	806		•																										
Via Romano Vineyards	150																												

South Area	MAP RANCH NUMBER	Product/Activity																											
		Alpacas / Wool	Apples / Cider	Apricots	Baked Goods / Food	Berries	Cherries	Christmas Trees	Citrus	Crafts / Gift Shops	Family Activities	Farm Stay / Camping	Figs / Persimmons / Kiwi	Honey / Preserves / Jams	Livestock / Meat	Lodging / Historic B & B	Nursery / Flowers	Nuts	Olive Oil / Tasting	Peaches / Nectarines / Plums	Pears	Picnic Area / Nature Trails	Pumpkins / Squash / Gourds	U-Pick Produce	Vegetables	Wine Grapes	Winery / Brewery / Distillery	Weddings / Events	
Alpacas of El Dorado	425	•																											
Alpacas of Somerset Farm	400	•																											
Bella Branch at SE Ranch	304	•																											
Bumgarner Winery & Vineyards	405																												
Bluebird Haven Ranch and Iris Garden	406																												
Camp Nauvoo	804																												
Cantiga Wineworks	423																												
Cielo Sulla Terra Estate Vineyards and Winery	409																												
El Dorado Brewing Company	823																												
Fanchers Tree Farm	404																												
Historic Fausel Ranch	307																												
Field Number Fifteen	350																												
Full Moon Farm	355																												
Goldenwood Bee Co.	301																												
Gwinllan Estate	438																												
Heavenly Ridge Farm	302																												
Holly's Hill Vineyards	345																												
J K Cattle	309																												
Miraflores Winery/Alvarez Vineyards	432																												
Narrow Gate Vineyards	308																												
Placerville Fruit Growers, Inc.	263																												
Shadow Ranch Vineyard	412																												
Sierra Vista Vineyards & Winery	441																												
Twin Oaks Vineyard	411																												
Up Country Ranch	303																												
Ursa Vineyards	416																												
Van der Vijver Estate	437																												
Windmill Creek Olive Oil	93																												
Windrush Vineyard	403	•			•	•																							



HARVEST CALENDAR.....

Determine when your favorite fruits are



WINERIES

VARIOUS WINES
Year Round!

NURSERIES

VARIOUS FLOWERS
Year Round!

TREES

BONSAI: Year Round
CHRISTMAS: Nov. – Dec.

BERRIES

MANY VARIETIES
June, July, August

CITRUS

MANY VARIETIES
January, February, March, April,
Mid-November, December

CHERRIES

MANY VARIETIES
May – early July

PEACHES

MANY VARIETIES
July – October

NECTARINES

MANY VARIETIES
July – October

PLUMS

MANY VARIETIES
July – October

APPLES

MANY VARIETIES
August – November

PEARS

MANY VARIETIES
July – November

ASIAN PEARS

MANY VARIETIES
August – November

Healthy Farms, Healthy Farm Life, and Healthy Farmland – *The Goals of El Dorado County Farm Trails*



By Mike Owen, El Dorado County Farm Trails President

El Dorado County's Farm Trails is a unique organization that seeks to match our local and diverse farmers and their products to the vibrant and entrepreneurial spirit of the County's pioneers and founding ranchers. Not satisfied with a role as merely an advocacy group for small farms and agricultural businesses, our group is responsible for the directional Farm Trails sign program around our County, an on-going scholarship program, the Placerville Downtown Farmer's Market and consumer outreach programs for residents and visitors alike.

We want to enhance your El Dorado County experiences to include memorable experiences with our local food, drink and hand-made products. These high-touch and experiential encounters can become life-long memories and lead to multi-generational traditions of visits to our beautiful County. Take an afternoon and

enjoy one of our curated experiences and find both hidden gems and rare opportunities to see and touch the face of nature.

Whether you enjoy a brisk and snowy run down a granite ski face, picking sun-ripened blueberries from mountain vines, getting splashed with a bow wave on a raft trip down the America River, sipping on an amazing wine at an undiscovered winery or biting into a warm Apple Cider donut, we want to make your El Dorado Experience special, memorable and fun to repeat!

You can use this handy guide for many years, or visit our website at www.edc-farmtrails.org to get caught up on the latest developments in our efforts to share the Bounty of our Land with our residents and visitors.



FARMER'S MARKETS IN EL DORADO COUNTY

PLACERVILLE



CHECK OUT OUR NEW LOCATION

Main Street Farmers' Market has moved to:

574 Main Street, Placerville



Wednesdays Evenings: 4 – dusk (7:30ish)

(All farmers happily accept EBT and MarketMatch.) This market specializes in local fruits and vegetables, sustainable agriculture and community. We offer live music, fresh produce, local vendors and fun for everyone. Call 530-919-5696 or check out our latest info at www.facebook.com/edcfarmersmarket

Certified Farmers' Market

Saturdays – May thru October

345 Placerville Dr., Placerville

8am - 12pm



EL DORADO HILLS

Certified Farmers' Market

Sundays – May 21 thru October 29

EDH Town Center

8am – 1pm

CAMERON PARK

Certified Farmers' Market

Wednesdays – May 10 thru October 12

Burke Junction at the corner of

Coach Lane and Strolling Hills Rd.

8am – 12 pm

SOUTH LAKE TAHOE

Certified Farmers' Market

Tuesdays – June 6 to October 10

American Legion Hall Parking Lot,

2732 South Lake Tahoe Blvd (Hwy 50)

8am – 1pm



Through a partnership with the Berkeley Ecology Center some of our local farmers' markets are able to accept EBT/CalFresh and match your EBT/CalFresh money dollar for dollar allowing you to buy more fresh local

Visit

Quilt Trail Project



January 2024 marks the 9th anniversary of EDC-FTA Quilt Trail Project's beginning, or being "On the Road with the Quilt Trail Project", as the members fondly say. There are 26 Americana works of art, AKA barn quilt blocks, dotting El Dorado County. The "Trail" continues to grow and is seen as a boon to agri-tourism, Ranch Marketing, Primitive art and community accomplishment.



Every barn quilt block tells a story that's unique to the location. As you cruise the "Trail", placards below the art explains the particular meaning and design...always an education and bit of discovery.

For 9 years, barn quilt enthusiasts have planned adventures, visiting this region to partake in the barn quilt movement. It's amazing to think of the coast-to-coast connection that was sparked in America in 2001 in Ohio, along with the fact that the EDC-FTA Quilt Trail Project is part of a national map.

The Quilt Trail Project extends the invitation to learn more, to attend a barn quilt paint party and/or to install your very own design in any given corner of El Dorado County.

Visit edc-farmtrails.org/quilt-trail-project for information and a map



Get a map at www.EDC-FarmTrails.org/quilt-trail-project



DAVE EVANS:

The Beekeeper with a Golden Touch

In the heart of El Dorado County, nestled among rolling hills and lush farmlands, lies a buzzing haven known as the **Goldenwood Bee Company**. At its helm stands Dave Evans, a man whose journey into the world of beekeeping began at the tender age of eighteen.

At a young age Dave was fascinated by the intricate dance of bees and embarked on his beekeeping odyssey with just eight hives. Fast forward 45 years, and his passion has flourished alongside his apiary. From those humble beginnings, Dave once had a thriving 400 hives, each buzzing with life and purpose. Yet, despite the success, Dave's ethos remains firmly rooted in sustainability and organic practices. Today, he maintains a modest 40 hives, carefully placed on organic farms, a testament to his commitment to both the bees and the environment they call home.

"What's always amazed me," Dave reflects, "is how adaptable bees are. They thrive in diverse environments, from the fragrant orchards of apples and cherries to the sprawling fields of blackberries and raspberries." Indeed, diversity is the hallmark of Dave's apiary. Hosting mostly Italian and Black Russian bees with a few hives of Chameleon all finding sanctuary amidst his carefully tended hives, each contributing their unique essence to the Goldenwood landscape.

"Beekeepers don't make honey; the bees do!" Dave muses, his eyes alight with reverence for his winged companions.

But Dave's talents don't end with beekeeping alone. In 1996, he established his farm with his wife Lynette, a sprawling testament to their dedication to sustainable agriculture. Here, they tend to a wide variety of vegetables along with almonds, cherries, pears, peaches, apples, raspberries, blackberries, mulberries and elderberries.

You can find Dave and Lynette selling their honey, juices, syrups, balsamic vinegars, jellies, fresh fruit and their signature honey granola at the Main Street Farmers Market, Every Wednesday 4-7:30 at 574 Main Street (June thru October). You can also find their honey at Winterhill downtown Placerville and Sierra Rizing in Lotus.

"It's all about balance," Dave explains, gesturing to the bounty around him. "The bees pollinate our crops, and in turn, we provide them with a sanctuary."

As the sun sets over the horizon, casting a golden hue over the land, Dave tends to his hives with the same reverence he's held



for over four decades. For him, beekeeping isn't just a livelihood—it's a way of life, a testament to the enduring partnership between man and nature, woven together by



the delicate wings of bees.





El Dorado County Farm Trails U-Pick Family Adventures...

Many of our farms in El Dorado County offer u-pick opportunities for customers. Beginning in May and June cherries are ripe; in June berries begin to ripen along with lavender; vegetables and flowers are available all summer; Fall brings apples, grapes, and pumpkins; the day after Thanksgiving starts off the Choose and Cut Christmas tree farms opening. Check the Ranch and Farm Directory on pages 42 and 43 for the farms that offer u-pick. Call ahead to see opening times at each farm.

spring May-June

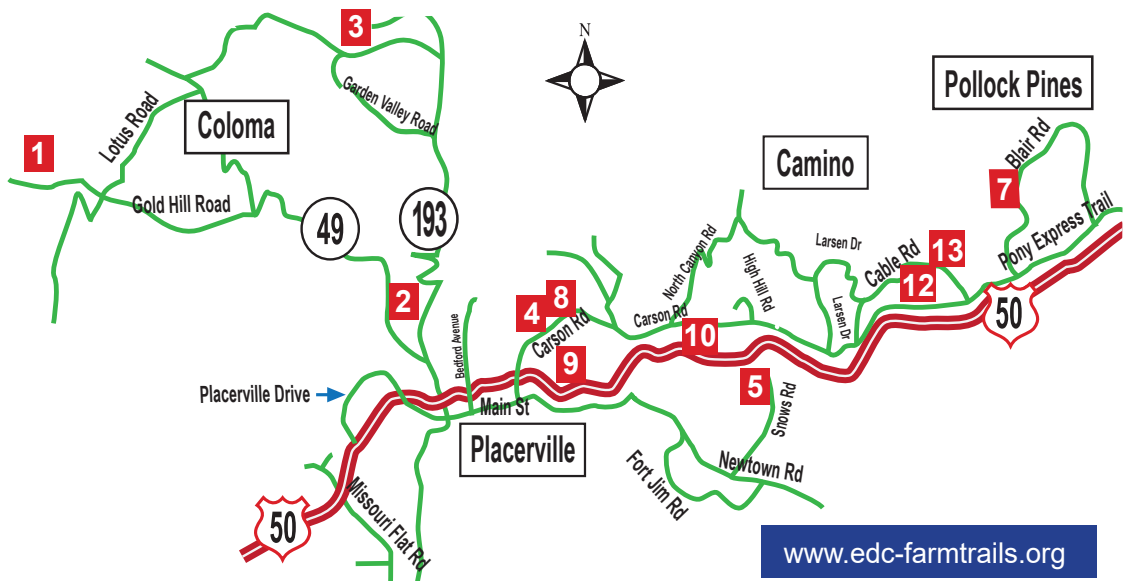
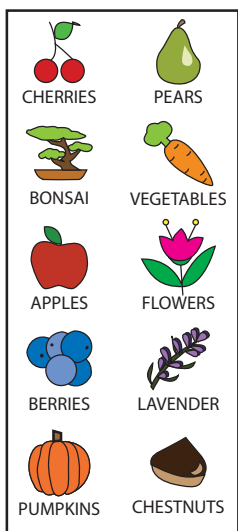
- 1 LOTUS BONSAI
1430 Lower Lake Dr., Placerville
530-622-9681 Sale last weekend in May
- 2 AMERICAN RIVER CHERRY CO.
2240 Diaz Dr • Placerville
530-748-9957
- 3 RUSTIC DREAM FARMSTEAD
5170 Marshall Rd., Placerville
530-558-1058
- 4 BLUESTONE MEADOWS
2025 Carson Rd., Placerville
530-621-1830
- 5 RAINBOW CAMINO RIDGE
3010 Snows Rd., Camino
530-644-1594
- 7 HARRIS FAMILY FARM
2640 Blair Rd., Pollock Pines
530-644-2194

summer July-Aug

- 2 AMERICAN RIVER CHERRY CO.
2240 Diaz Dr • Placerville
530-748-9957
- 3 RUSTIC DREAM FARMSTEAD
5170 Marshall Rd., Placerville
530-558-1058
- 5 RAINBOW CAMINO RIDGE
3010 Snows Rd., Camino
530-644-1594
- 7 HARRIS FAMILY FARM
2640 Blair Rd., Pollock Pines
530-644-2194

fall Sept-Oct

- 8 SMOKEY RIDGE FARMSTAND
2160 Carson Rd., Placerville
530-626-5077
- 9 24 CARROT FARM
2731 Jacquier Rd., Placerville
510-828-6538
- 10 BOA VISTA
2952 Carson Road, Placerville
530-622-5522
- 12 O'HALLORAN'S APPLE TRAIL RANCH
2261 Cable Road, Camino
530-644-3389
- 13 HANGTOWN KID APPLE ORCHARD
2589 Mace Rd., Camino
530-647-1810
- 7 HARRIS FAMILY FARM
2640 Blair Rd., Pollock Pines
530-644-2194



www.edc-farmtrails.org

El Dorado County

THE LIFESTYLE AWAITS, LET'S EXPLORE YOUR OPTIONS!



Wineries, Farm
Trails & Ranches



Whitewater River
Rafting



Hiking & Mountain
Biking Trails



denise barnhart

REAL ESTATE GROUP

Powered by Re/Max Gold

75+ Years Local Experience ◆ **Homes & Land** ◆ **Investments & 1031 Exchange**

"Everyone knows a Realtor, but you really don't know exceptional quality & service until you have Denise Barnhart at your side. She is absolutely the best & most competent individual you want advocating for you when you buy or sell. Like I said, everyone knows a Realtor, but you really only need Denise." - Katie V.



Call or text Denise
530.957.1608

DRE #01185017





The El Dorado Ale Trail is a unique collection of craft breweries nestled along the western slope of the Sierra Nevada Mountains in California's Gold Country. Each brewery offers distinctly different craft beers inspired by history, natural beauty, and locally sourced ingredients.



1 Mraz Brewing Company
2222 Francisco Dr #510
El Dorado Hills, CA 95762
(916) 934-0744

2 Cool Beerwerks
9020 Ellinghouse Dr.
Cool, CA 95614
(530) 885-5966

3 BarmHaus Brewing Co.
3782 Winding Creek Ln.
Garden Valley, CA 95633
(530) 444-0476

4 Gold Hill Vineyard and Brewery
5690 Vineyard Ln.
Placerville, CA 95667
(530) 626-6522

5 El Dorado Brewing Company
6051 Enterprise Dr #102
Diamond Springs, CA 95619
(530) 558-4188

6 Solid Ground Brewing
552 Pleasant Valley Rd.
Diamond Springs, CA 95619
(530) 344-7442

7 Field Number Fifteen
Winery and Brewery
4771 Greenhills Rd.
Placerville, CA 95667
(530) 536-0621

8 Hwy 50 Brewery
3544 Carson Rd #20
Camino, CA 95709
(530) 556-5060

9 Jack Russell Farm Brewery
2380 Larsen Dr.
Camino, CA 95709
(530) 647-6222

EXPLORE GOLD COUNTRY • STAY AND PLAY • PICNICS

The Davies Family Inn at Shadow Ridge Ranch
Lodging & Events

3700 Fort Jim Road, Placerville
TheDaviesFamilyInn.com • 530.295.1000

GO WHITE WATER RAFTING • VISIT APPLE HILL

SKI THE SIERRA • PLAY IN THE NATIONAL FOREST • GO ANTIQUING

Have a wedding • wine tasting • have a reunion • corporate

Happily ever after starts here...

THE INDEPENDENT
RESTAURANT AND BAR

AMERICAN FUSION

SCAN FOR MENU

LUNCH & DINNER • BEER & WINE
CRAFT COCKTAILS • PATIO DINING

639 Main Street | Placerville, CA 95667
530-344-7645 | www.IndependentPlacerville.com

Visit our Apple Hill™ farms any time of year

Representing over 50 local, family farms, the Apple Hill™ Growers are best known for apple farms and family-friendly activities in the fall. But a trip to the Apple Hill™ Growers can be much more than just apples, pumpkins, pastries, and pies. The winding roads and scenic beauty allow year-round agriculture adventures.

Spring & Summer is the perfect time for berry picking, choosing farm fresh produce, and stopping to smell the flowers. The Christmas Tree Farms open in November or pair your wine experience with overnight stay at one of the Bed & Breakfast Inns any time of year.

Founded in 1964 with just 16 apple ranches, they have now grown to include unique fruit & veggie farms, wineries, B&Bs, flower gardens, Christmas tree farms, and more! One thing has never changed, Apple Hill™ Growers have always been dedicated to supporting agriculture in our community.

PHOTOS COURTESY: Menka Belgat



PHOTO COURTESY: Apple Hill Growers



PHOTO COURTESY: Apple Hill Growers



PHOTO COURTESY: John Flinn

Where to find fall colors around El Dorado County

Leaf peepers, social media rock stars, and anyone looking for Mother Nature's annual show of colors will find that in spades in and around El Dorado County during the autumn, where the trees explode in color from late September through early December.

Those looking for the first colors of the season should head to the Carson Pass, Hope Valley and Monitor Pass regions, accessible via state highways 88 and 89. Here, expansive hillsides of quaking aspen flame brilliant gold, with occasional hints of orange. The dark blue high-elevation skies, craggy snow-dusted peaks, and greenish-black conifers are a dramatic contrast – and ensure your Instagram photos will pop!

The high country doesn't have all the fun. Fall colors are everywhere at lower altitudes, too. The native black oak, found throughout the Sierra Nevada foothills between elevations of about 1,000 and 5,000 feet, boasts leaves that turn a brilliant gold. If you happen to be traveling on Highway 50 through Placerville in El Dorado County, you will also see fiery-red pistache trees.

Here are a few of our favorite places to spot fall at its best:

Marshall Gold Discovery State Historic Park –

Enjoy the spectacular view along the American River as well as the many stands of colorful trees along Hwy 49 heading toward Auburn. Located in Coloma on Highway 49.

Apple Hill Growers – Brilliant fall colors provide a beautiful backdrop for this bucolic farm region. Sample a multitude of apple and pumpkin delicacies at the many farms and orchards while you view the splendor of fall. Located in Camino off Highway 50.

Grass Lake – You'll find magnificent groves of Quaking Aspen surrounding his beautiful lake/meadow located at the top of Luther Pass on Highway 89 just off Highway 50.

Fallen Leaf Lake – Take a short hike to the shores of the lake, where you can see Mt. Tallac framed by Quaking Aspen. Located on Fallen Leaf Lake Road off Highway 89 just north of South Lake Tahoe.

PHOTO COURTESY: Paul Cockrell

Where to Gold Pan in El Dorado County

It was the discovery of gold in the American River that triggered the Californian Gold Rush. You can relive some of that exciting history! Come to El Dorado County and dip your pans in the American River to prospect for gold.

Marshall Gold Discovery State Historic Park

Gold Panning Lessons – Learn how to pan for gold by taking a 15 minute lesson then spend the next half hour panning the troughs looking for garnets, fools gold, and real gold flakes!

Gold Panning lessons are being offered most days at 10 am, 11 am, 1 pm, 2 pm and 3 pm. Please call 530.622.3470 for availability. Fee: \$10 per person.

Recreational Gold Panning – Gold panning is allowed during park hours on the east side of the river across Mount Murphy Bridge. Hands and Pans only! No other mining equipment is allowed to protect historic resources in the park. Park visitors need to provide their own pan from home, or pans can be purchased in the Marshall Gold Mercantile in the museum building.

Gold Bug Park & Mine

Gem Panning – Gem panning as a fun alternative to traditional gold panning. Gem panning is often more fun for kids because the gems stand out more than tiny gold flakes! Everyone loves the chance to pan for gems and as in the old days, some get lucky! Panning at the trough is available for \$5.00 for an hour which includes rental of pans.



PHOTO COURTESY: Betty Seaquist

AUTHENTIC EXPERIENCES ON THE DIVIDE




- Lodging
- Rafting
- Restaurants
- Equestrian
- Wineries
- Gold Rush Towns

(530) 444-9668
<https://www.dividechamber.com>





CALIFORNIA WELCOME CENTER

El Dorado Hills

"The California Welcome Center is here as your personal travel concierge to assist you in all aspects of your California trip."

Come visit us at:
 2085 Vine St., Ste. 105
 El Dorado Hills, CA
 (916) 358-3700
www.visitcwc.com





Bella Vista
BED & BREAKFAST



*The Most Beautiful Views in
Gold Country, CA*

www.DiscoverBellaVista.com



Contact Us:
Call (530) 622-3456
or send us an Email:
Kathleen@discoverbellavista.com
581 Cold Springs Road, Placerville
CA 95667

**SAVE
10%**

Use code
BV2024
to save *10% on
SUN-THURS night
reservations

*CANNOT BE COMBINED WITH ANY OTHER SPECIALS

Historic Smith Flat House



COURTYARD DINING



MUSIC IN THE COURTYARD

From Farm To House • Everything Made Fresh For Our Friends

Serving Cold Artisan Craft Beers & Local Wineries!

2021 Smith Flat Road, Placerville

Wed-Thur 5pm-9pm, Fri-Sat 11am-9pm, Sun 10am-9pm • smithflathouse.com



FAIR PLAY WINERIES
Harvest Festival

November 2nd & 3rd 11am to 5pm

use promo code FARMTRAILS
for \$5 off ticket price

FairPlayHarvestWineFestival.com



AMERICAN RIVER CHERRY COMPANY



CHERRIES • BERRIES • HONEY

You Pick Or Pro-Picked

Cherries & Berries

Open Seasonally Sunday thru Friday 8am to 5pm

(530) 748-9957 • 2240 Elm Drive, Placerville • www.americanrivercherryco.com



PLACERVILLE

HARDWARE

Oldest Hardware Store West of the Mississippi

THE STORE THAT HAS IT ALL!

441 Main Street, Placerville

530-622-1151

YETI CSW 100% LOCAL

WEDDINGS IN EL DORADO COUNTY

From funky to formal, fabulous and fun, El Dorado County is quickly becoming the newest wedding destination for today's astute couples.

Our unique, affordable venues allow you to choose from stunning vineyards, beautiful river campgrounds, charming inns, and lovely hotel ballrooms.

So, no matter what your budget, theme, or unique vision, we have a venue guaranteed to meet your needs and the wedding professionals to help create the wedding of your dreams!



PHOTOS COURTESY: Tricia V Photography



EL DORADO STAY AND PLAY SHUTTLE

Free funding to transport your guests in style! When you choose from any of El Dorado County's unique accommodations for your overnight guests, you can receive up to \$1000 to transport your group in luxury and style on your wedding day! It's easy to apply, easy on your budget, easy on the planet, and an easy way to share your worry-free wedding day with your out-of-town guests!



The El Dorado Stay and Play Shuttle is funded by a grant from the El Dorado County Air Quality Management District. The El Dorado County Visitors Authority designed the program to encourage group transportation and overnight stays in El Dorado County, reduce motor vehicle emissions and introduce new visitors to the area.



530-621-5885
visit-eldorado.com/shuttle
stayandplay@eldoradocounty.org

WEDDING & EVENT SITES

Bluestone Meadow

Bluestone Meadow lavender farm offers a beautiful setting for weddings and receptions that can go from casual to sophisticated. We offer three ceremony sites that offer three very distinct settings. Each ceremony site can accommodate up to 175 guests and wedding party.
2025 Carson Road, Placerville
530-621-1830
info@bluestonemeadow.com
bluestonemeadow.com

The Historic Cary House Hotel

A boutique hotel creating historic weddings since 1857. One location for rehearsal, wedding & reception.
300 Main Street, Placerville
530-622-4271
caryhouse.com or www.facebook.com/HistoricCaryHouseHotel

The Davies Family Inn at Shadow Ridge Ranch

Imagine your dream wedding surrounded by tranquil forest and serene landscape. The rustic elegance of this 1800's homestead offers a picture perfect setting for your special day. On site lodging will make your experience relaxing and memorable.
3700 Fort Jim Road, Placerville
530-295-1000 or 530-919-4169 (cell)
Visit us at: thedaviesfamilyinn.com

Golden Leaves Vineyard & Winery

Located in the beautiful foothills wine region of Fair Play. The tasting room & dining room overlooks the sprawling vineyards and can accommodate up to 50 guests inside and 100+ outside. The covered, wrap around deck, water tower, and pond offer picturesque photo ops. Catering available.
3625 Omo Ranch Road
(530) 620-1888
goldenleaveswines.com

High Sierra Iris & Wedding Gardens

Outdoor wedding venue located in beautiful Apple Hill area of Camino May – October. Featuring Stone Wedding Staircase, Gazebo, Decks and Pond. Photo Opportunities abound in our 1 Acre Garden.
530-642-1222
weddingsnflowers.com

WEDDING & EVENT SITES

Roses & Acorns Creekside Weddings at Camp Nauvoo

Stunning outdoor venue situated along Weber creek featuring beautiful meadow, Amish gazebo, lodge, rustic decor and everything to make your special day perfect (available May through October). We offer all types of packages and specialize in camping weddings. Contact us at 916-207-9441 or rosesandacornsweddings@gmail.com
More info at: www.campnauvooplacerville.com

Smith Flat House

Pick your picture perfect setting from The Courtyard with seating for 350 or a more intimate setting in The Glasshouse with seating up to 85 or The Carriage Room with a built-in stage. No matter which space you choose, you can count on our skilled staff serving your guests a meal to remember. Call now to schedule a personal consultation.
2021 Smith Flat Road, Placerville
530-621-1003 * smithflathouse.com

BED & BREAKFAST

Bella Vista Bed & Breakfast

A stunning 5-acre hillside estate with incomparable American River views, Bella Vista creates the perfect backdrop for a relaxing retreat or romantic getaway. The local area is rich with California Gold Rush history and features award-winning Wines, incredible restaurants, white-water rafting, horseback riding, Sierra-Nevada Mountain biking, hiking, fishing, swimming, and many other activities just waiting for you to discover! Locally-sourced breakfast, lush garden, beautiful art and antique touches, plus a Tesla charging station.
(530) 622-3456
581 Cold Springs Rd., Placerville
bellavistainc.net

CATERING

Old Town Grill

Chef John Sanders and his team are adept at large and grand events or small and intimate. Every dish is artfully prepared from casual to elegant. Your guests will be impressed!
530-622-2631
444 Main Street

HONEYMOON TRAVEL

El Dorado Hills Travel

Celebrating 40 Years Experience.
The philosophy of El Dorado Hills Travel is to provide a unique vacation experience that will have you returning to us year after year. We are proud to be a premier full-service agency, specializing in cruises and leisure travel for families, corporations, groups and more! Our well-trained staff is ready to serve you. Let us plan your honeymoon, cruise, or vacation! 3941 Park Dr., #90 El Dorado Hills
916-933-0476
www.edhtravel.com

HAIR & MAKEUP

The Look Salon

Let us help you achieve that wedding day confidence with a full array of hair, skin care and waxing. From cuts to color & highlights your satisfaction is our top priority. You can rest assured that our experienced stylists will make you look your very best. Voted best salon 12 years in a row!
530-626-3510
415 Placerville Drive, Ste I, Placerville
thelooksalonplacerville.com

For a complete listing of Wedding and Event sites please visit <https://visit-eldorado.com/all-wedding-sites/>

Or scan QR code



WINE COUNTRY IN EL DORADO COUNTY



PHOTO COURTESY: Visit El Dorado

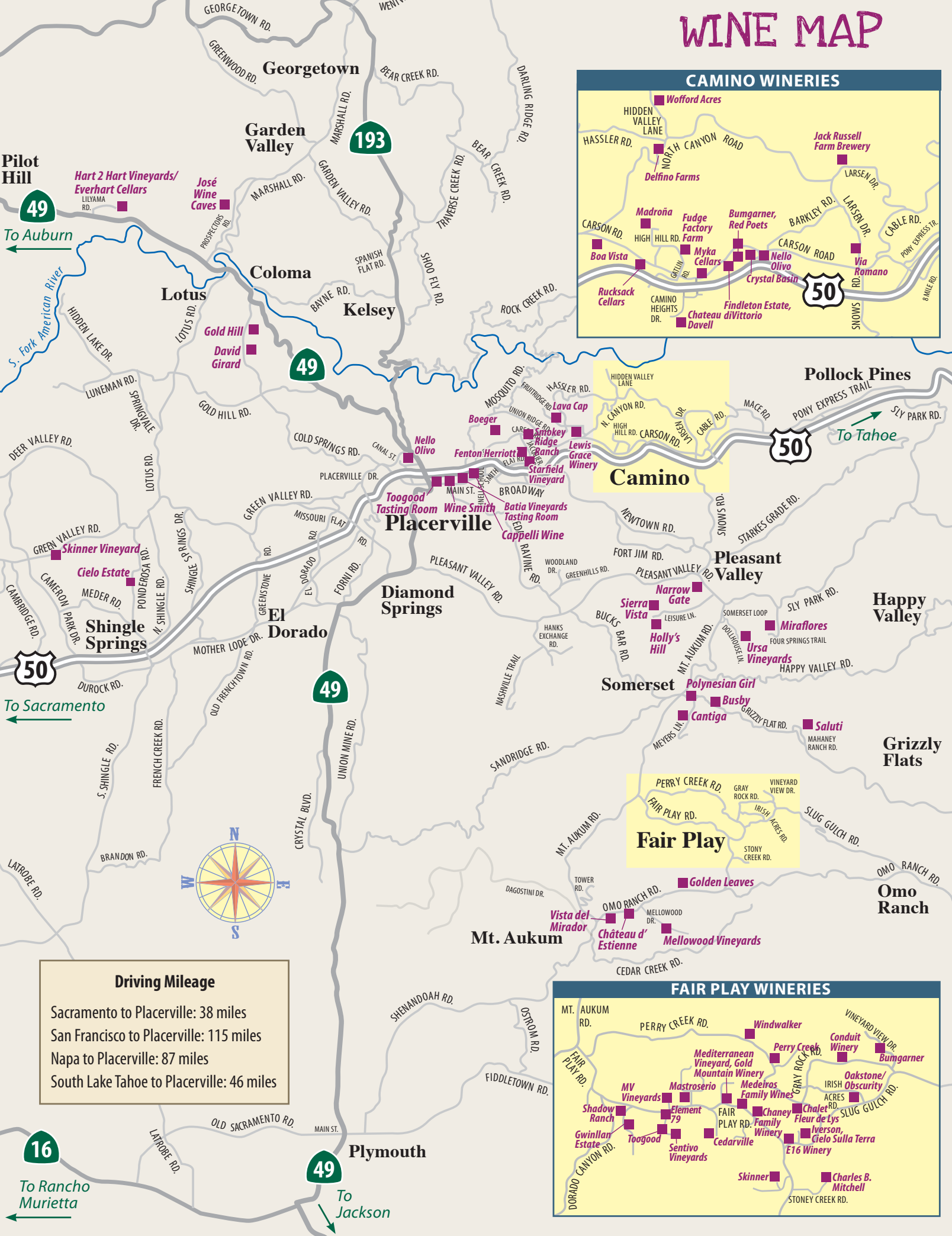
EL DORADO WINE TRAILS

The El Dorado wine region has attracted attention from critics and consumers around California and beyond. With over 150 years of history steeped in gold and agriculture, the region is poised for its newfound resurgence in viticulture. Our wineries are renowned for making vibrantly flavorful, distinctly delicious wines, grown in the dramatic elevations of the Sierra Nevada. Nearly 70 wineries throughout the El Dorado County offer outstanding value, taste, and variety with frequent opportunities to meet the winemakers and owners.

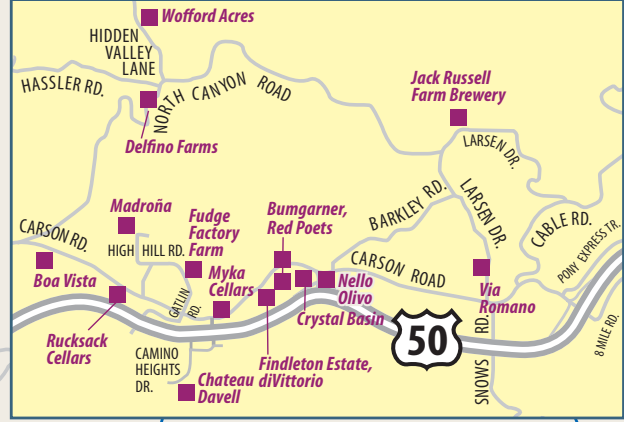


PHOTO COURTESY: El Dorado Winery Association

WINE MAP



CAMINO WINERIES

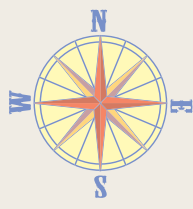


Camino

Fair Play



Driving Mileage
 Sacramento to Placerville: 38 miles
 San Francisco to Placerville: 115 miles
 Napa to Placerville: 87 miles
 South Lake Tahoe to Placerville: 46 miles



16
 To Rancho Murietta

49
 To Jackson

50
 To Tahoe

50
 To Sacramento

49
 To Auburn

WINE DIRECTORY IN ELDORADO COUNTY

Camino

Andersonia Vineyard & Winery 🐾

2875 Larsen Drive
530 303 8008
andersonia.wine
Open: Sat & Sun 12 - 5

Bumgarner Wines 🐾

3550 Carson Road, Suite B
530-303-3418
bumgarnerwinery.com
Open: Daily 11 - 5

Chateau Davell Winery 🐾

3020 Vista Tierra Drive
530-644-2016
chateaudavell.com
Open: Daily 11 - 5

Crystal Basin Cellars 🐾

3550 Carson Road
530-647-1767
crystalbasin.com
Open: Daily 11 - 5

diVittorio Winery 🐾

3500 Carson Road
530-621-2166 or 530-644-7734
divittoriowinery.com
Open: Fri - Sun 11 - 5

Findleton Estate and Winery 🐾

3500 Carson Road
530-644-4018
finzinwines.com
Open: Daily 11 - 5

Jack Russell Farm Brewery & Winery

2380 Larsen Drive
530-647-9420
Open: Mon - Thurs 1 - 7; Fri 1 - 8;
Sat 11 - 7

Madroña Vineyards 🐾

2560 High Hill Road
530-644-5948
madroñavineyards.com
Open: Daily 11 - 5

Nello Olivo 🐾

3544 Carson Road, Ste. 10
530-303-3617
nelloolivo.com
Open: Daily: Mon - Thurs 12 - 6;
Fri - Sat 11 - 7, Sun 11 - 6

Red Poets & Skyhawk Lane

3550 Carson Road, Suite E
530-405-3639
skyhawklane.com
Open: Fri - Mon 11 - 4

Via Romano Vineyards

2875 Larsen Drive
530-269-9463
vrv.vin
Open: Thur - Mon 12 - 5

Wofford Acres Vineyards 🐾

1900 Hidden Valley Lane
530-626-6858
wawwines.com
Open: March - August: Thur - Sun
11 - 5; Sept - Oct: Thurs - Mon
11 - 5; Jan - Feb: Sat & Sun 12 - 4

Fair Play

Bumgarner Wines 🐾

7380 Vineyard View Drive
530-957-7495
bumgarnerwinery.com
Open: Wed - Thurs 12 - 4 &
Fri - Sun 11 - 5

Busby Cellars 🐾

6375 Grizzly Flat Road
530-344-9119
busbycellars.com
Open: Sat - Sun 11 - 5 or
By Appointment

Cantiga Wineworks 🐾

5980 Meyers Lane
530-621-1696
cantigawine.com
Open: Fri - Sun 11 - 5

Cedarville Vineyard

6320 Marestail Road
530-620-9463
cedarvillevineyard.com
Open: By Appointment

Chaney Family Winery

8175 Fairplay Road
530-663-6065
chaneyfamilywinery.com
Open: By Appointment

Charles B. Mitchell 🐾

8221 Stoney Creek Road
530-620-3467
charlesbmitchell.com
Open: Thurs - Sun 11 - 5

Château d' Estienne

2700 Omo Ranch Road
530-620-7960
chateaudestienne.com/
Open: Fri - 11 - 4; Sat & Sun 11 - 5

Cielo Sulla Terra Estate Vineyards 🐾

8061 Perry Creek Road
530-620-7474
cielosullaterra.com
Open: Fri - Sun 11 - 4:45

Conduit | divergent vine | Tag + Jug Cider Co. 🐾

6100 Grey Rock Road
707-395-7711
conduitwine.com
Open: By Appointment

E16 Winery 🐾

8085 Perry Creek Road
530-620-6200
e16wines.com
Open: Fri - Sun 11 - 5

Element 79 Vineyards

7350 Fairplay Road
530-497-0750
element79vineyards.com
Open: Daily 11 - 5

Fleur de Lys Winery 🐾

7696 Perry Creek Road
530-620-2246
fleurdelyswinery.com
Open: Wed & Thurs 11 - 4;
Fri - Sun 11 - 5

Gold Mountain Winery & Lodge 🐾

7740 Fair Play Road
530-620-3248
goldmountainwineryandlodge.com/

Golden Leaves Winery 🐾

3625 Omo Ranch Road
530-620-1888
goldenleaveswines.com
Open: Daily 11 - 5, Dining By Appt.

Gwinllan Estate Winery 🐾

7060 Fairplay Road
530-723-2879
gwinllanestate.com
Open: Fri - Sun 11 - 5

Iverson Winery

8061 Perry Creek Road
530-620-7474
iversonwinery.com
Open: Fri - Sun 11 - 4:45

Kehret Vineyards

6781 Tower Road
209-245-3757
kehretvineyards.com
Open: Fri - Sun 11 - 5

Mastroserio Winery 🐾
 7351 Fairplay Road
 530-417-4321
 mastroseriowinery.com
Open: Fri - Sun 11 - 5

Medeiros Family Wineries
 7480 Fairplay Road
 408-427-7536
 medeirosfamilywines.com
Open: Fri - Sun 11 - 5

Mediterranean Vineyard 🐾
 7449 Fairplay Road
 530-240-8386
 medivineyards.com
Open: Wed - Sun 11 - 5

Mellowood Vineyards 🐾
 2979 Mellowood Drive
 530-599-0313
 mellowoodvineyard.com
Open: Sat - Sun 12 - 4

MV Winery/Miller Vineyards
 7263 Fairplay Road
 530-620-1067 and 916-955-1376
 mvwinery.net
Open: Fri - Sun 11 - 5 or
 By Appointment

Oakstone Winery
 6470 Irish Acres Road
 530-620-5303
 oakstone-winery.com
Open: Wed - Sun 11 - 5

Perry Creek Winery 🐾
 7400 Perry Creek Road
 530-620-5175
 perrycreek.com
Open: Thurs - Sun 11 - 5

Polynesian Girl
 6020 Grizzly Flat Road
 530-344-4788
 polynesiangirlwine.com
Open: Fri - Sun 11 - 5

Saluti Cellars
 7505 Grizzly Flat Road
 530-626-0800
 saluticellars.com
Open: Fri - Sun 11:30 - 5:30

Sentivo Vineyards & Winery 🐾
 7460 Fairplay Road
 916-936-3306
 sentivovineyards.com
Open: Thurs - Mon 11 - 5

Shadow Ranch 🐾
 7050 Fairplay Road
 530-620-2785
 shadowranch.com
Open: Fri - Sun 11 - 5

Skinner Vineyards 🐾
 8054 Fairplay Road
 530-620-2220
 skinnervineyards.com
Open: Fri - Sun 11 - 5

Toogood Estate Winery 🐾
 7280 Fairplay Road
 530-620-1910
 toogoodwinery.com
Open: Daily 11 - 6

Vista del Mirador 🐾
 2501 Omo Ranch Road
 530-620-7913
 miradorwinery.com
Open: Sat - Sun 11 - 4

Windwalker Vineyards 🐾
 7360 Perry Creek Road
 530-620-4054
 windwalkervineyard.com
Open: Daily 11 - 5

T.W. BONKERS
Toy and Candy Emporium

**TOYS·CANDY·CHOCOLATE
 GAMES·PUZZLES·FIDGETS**

\$5.00 OFF
YOUR PURCHASE OF \$30 OR MORE!
 EXPIRES 12/31/24

ONE ORIGINAL COUPON PER CUSTOMER

398 MAIN ST • (530) 642-2671

BEST WESTERN PLUS
Placerville Inn

We Offer -

- 105 Newly Renovated Rooms & Suites
- 2 miles from Red Hawk Casino (Exit 44A)
- Complimentary Hot Breakfast Buffet
- Free WiFi
- Outdoor Pool and Spa
- Exercise Room & Guest Laundry
- Lobby Lounge with Fireplace (Open 24 hours)
- Pet Friendly 🐾🐕🐈

AAA
 3 Diamond
 AAA rating

*For all of your
 Business &
 Leisure Lodging
 Needs*

BW
**Best
 Western
 PLUS.**

6850 Greenleaf Drive, Placerville
 (530) 622-9100
 bestwestern.com/placervilleinn

WINE DIRECTORY IN ELDORADO COUNTY

Garden Valley

Jose Wine Caves 🐾

6220 Prospectors Road
707-695-7843

josewinecaves.com

Open: Sat - Sun 10 - 5; Mon - Fri
By Appointment Only

Placerville

Batia Vineyards Tasting Room 🐾

459 Main St.
530-683-7308

batiavineyards.com

Open: Thur - Fri 3 - 9; Sat 12 - 9;
Sun 12 - 6

Boa Vista Wines 🐾

2952 Carson Road
530-622-5522

boavista.com

Open: Daily 7:30 - 6

Boeger Winery 🐾

1709 Carson Road
530-622-8094

boegerwinery.com

Open: Daily 10 - 5

Cappelli Wine

484 Main St.
530-870-4372

cappelliwine.com

Open: Mon - Thu 1 - 6;
Fri & Sat 1 - 8; Sun 1 - 5

David Girard Vineyards 🐾

741 Cold Springs Road
530-295-1833

davidgirardvineyards.com

Open: By Appointment Only

Fenton Herriott Vineyards 🐾

120 Jacquier Court
530-642-2021

fentonherriott.com

Open: Thur - Mon 11 - 5

Field Number Fifteen

4771 Greenhills Road
530-536-0621

fieldnumberfifteen.com

Open: Thur - Sun 11 - 5

Fudge Factory Farm 🐾

2860 High Hill Road
530-644-3492

fudgefactoryfarm.com

Open: Daily: Sept - Nov 9 weekdays 10 - 5;
weekends 9 - 5; Dec 1 - 15 weekdays 10 - 4
weekends 9 - 5

Gold Hill Vineyard & Brewery 🐾

5660 Vineyard Lane
530-626-6522

goldhillvineyard.com

Open: Thur - Sun 10 - 5

Holly's Hill Vineyards 🐾

3680 Leisure Lane
530-344-0227

hollyshill.com

Open: Daily 10 - 5

Lava Cap Winery 🐾

2221 Fruitridge Road
530-621-0175

lavacap.com

Open: Daily 10 - 5

Lewis Grace Winery 🐾

2701 Carson Road
530-642-8424

lewisgracewinery.com

Open: Wed - Mon 11 - 5

Miraflores Winery 🐾

2120 Four Springs Trail
530-647-8505

mirafloreswinery.com

Open: Daily 11 - 5

Myka Cellars 🐾

3405 Carson Court
530-644-3474

mykaestates.com

Open: Daily 11 - 5

Narrow Gate Vineyards 🐾

4282 Pleasant Valley Road
530-644-6201

narrowgatevineyards.com

Open: Fri - Sat 11 - 5; Sun 12 - 5; most
Mondays & Holidays

Nello Olivo Winery 🐾

643 Bee Street
530-409-5603

nelloolivo.com

Open: Fri - Sun 11 - 5

Rucksack Cellars

3030 Carson Road
530-647-2113

rucksackcellars.com

Open: Thurs - Sun 12 - 5

Sierra Vista Winery 🐾

4560 Cabernet Way
530-622-7221

sierravistawinery.com

Open: Daily: Sun - Thurs 11 - 5;
Fri - Sat 11 - 7

Smokey Ridge Farmstand & Winery 🐾

2160 Carson Road
530-626-5077

smokeyridgeranch.com

Open: May - Dec, Sat - Sun 9 - 5

Starfield Vineyard 🐾

2750 Jacquier Road
530-748-3085

starfieldvineyards.com

Daily: 11 - 4 By Appointment

Toogood Cellars

304 Main Street
530-344-7010

www.toogoodwinery.com/Toogood-
Cellars

Open: Thurs - Mon 1 - 8

Ursa Vineyards 🐾

5001 Dollhouse Road
530-644-3443

ursavineyards.com

Open: By Appointment

Wine Smith

346 Main Street
530-622-0516

thewinesmith.com

Open: Thurs - Sat 12 - 10

Pilot Hill

Hart 2 Hart Vineyards/Everhart Cellars 🐾

5821 CA State Hwy 49
530-885-9463

hart2hartvineyards.com

Open: Thur - Sun 11:30 - 5:30; Open
Memorial Day and Labor Day

Rescue

Skinner Vineyards 🐾

3790 Green Valley Road
530-620-2210

skinnervineyards.com

Open: Thurs - Sun 12 - 5

Shingle Springs

Cielo Estate 🐾

3040 Ponderosa Road
530-672-8575

cieloestate.com

Open: Thur - Sun 11 - 5

El Dorado Wine Country has so many wineries to explore



Where will you start?

BUMGARNER

Bumgarner Winery

3550 Carson Road,
Bldg. B, Camino
(530) 303-3418

Open Daily 11am – 5pm

OR 7380 Vineyard View Dr., Fair Play
(530) 957-7495

W-Th 12pm - 4pm, F-Sun 11am - 5pm
bumgarnerwinery.com



Fenton Herriott Vineyards

120 Jacquier Court
Placerville

530-642-2021

Fentonherriott.com

Open Thur – Mon 11am – 5pm



CRYSTAL BASIN CELLARS

Crystal Basin Cellars

3550 Carson Road
Camino

530-647-1767

crystalbasin.com

Open daily, 11am–5pm



Lava Cap Winery & Vineyards

2221 Fultridge Road
Placerville

530-621-0175

lavacap.com

Open daily, 10am–5pm



Proud Members of El Dorado Winery Association
For more information about these wineries visit:
Eldoradowines.org/wineries or scan the QR Code



LODGING DIRECTORY IN EL DORADO COUNTY

Cameron Park

HOTELS & MOTELS

Quality Inn And Suites

3361 Coach Lane • 530-677-2203
www.qualityinncameronpark.com
59 rooms, pet friendly, swimming pool, hot tub/spa, kitchen(ette)*, complimentary breakfast, washer/dryer, internet access*

Studio 6 Suites

3444 Coach Lane • 530-677-7177
www.motel6.com/en/home/motels.ca.cameronpark.7372.html
56 rooms, pet friendly (dogs only, with extra cost), swimming pool, hot tub/spa, complimentary breakfast, washer/dryer, internet access*

Camino

BED & BREAKFAST

North Canyon Inn

3901 North Canyon Road
530-957-6952
www.northcanyoninn.com
4 rooms, 8 person maximum capacity, hot tub*/spa, complimentary breakfast

VACATION RENTAL

Miners Cabin at Madrone Hill

2600 Barkley Road • 916-835-9600
www.airbnb.com/rooms/41342247?fbclid=IwAR0oPg-g5GIRm8GzdtmeE-iG2s-7jz2qVMvanUcuv6anSeGcK1Mc9ugEJw&source_impression_id=p3_1676320703_TPKIS%2Bm0ZRIR%2FtXT
1 room, pet friendly, kitchen(ette)*, fireplace*, 1 bathroom, 1 internet access*

Coloma

CAMPGROUNDS

American River Resort

6019 New River Road • 530-622-6700
www.americanriverresort.com
boat ramp, swimming pool, picnicking, fishing, restrooms, showers, RV hookup, cabins for rent, potable H₂O, ADA accessible

Coloma Resort @ Sutter's Mill

6921 Mt Murphy Road • 530-621-2267
www.colomaresort.com
pet friendly, swimming pool, fishing, restrooms, showers, RV hookup, cabins for rent, potable H₂O, ADA accessible

VACATION RENTAL

Coloma Cottages

5941 New River Road • 530-334-3479
www.colomacottages.com
8 rooms, pet friendly, kitchen(ette)*, washer/dryer, internet access*

Gold Discovery Ranch

385 State Hwy 49
https://visit-eldorado.com/lodging/united-states/california/el-dorado-county-1/lodging-coloma-the-divide/gold-discovery-ranch
Pet friendly, kitchen, 2 bedrooms, 1 bath, washer/dryer, internet access*

Diamond Springs

VACATION RENTAL

Back of the Moon Cottage in the Hills

4151 Wagon View Trail • 530-306-1874
airbnb.com/h/backofthemooncottageinthehills
2 rooms, kitchen(ette)*, 1 bathroom, washer/dryer, internet access*

Koi On Toyon

4244 Toyon Drive • 805-324-2798
www.airbnb.com/rooms/3614036?source_impression_id=p3_1675717746_xHV6teduieicshoVL
4 rooms, pet friendly, kitchen(ette)*, fireplace*, 4 bathrooms, internet access*

El Dorado Hills

HOTELS & MOTELS

Holiday Inn Express

4360 Town Center Blvd. • 916-358-3100
www.hiexpress.com/eldoradohills
93 rooms, swimming pool, hot tub/spa, kitchen(ette)*, complimentary breakfast, meeting facilities, washer/dryer, internet access*

Fair Play

BED & BREAKFAST

Lucinda's Country Inn

6701 Perry Creek Road • 530-409-4169
www.lucindascountryinn.com
6 rooms, 20 person maximum capacity, pet friendly, kitchen(ette)*, fireplace*, complimentary breakfast, internet access*

Trento Family 7-Up Ranch

8060 Fairplay Rd • 530-303 8281
www.trentofamily7-upranch.com
6 rooms, 12 person maximum capacity, complimentary breakfast

*Amenities available in room

El Dorado County & Beyond
Let's Get Started!

SUSIE DILTS HUBER
REALTOR

Residential
Commercial
Investment
Land

530.957.3478
SueDiltsRealtor.com
RE/MAX GOLD DRE#01190233

THE HISTORIC
1853

www.americanriverinn.com

American River Inn
BED & BREAKFAST

Events | Weddings | Reunions | Meetings

Sited between San Francisco & Lake Tahoe
in the heart of California's Gold Country

(530) 333-4499
Enjoy the Magic
of this 1853 Historic
Victorian Mansion!



VACATION RENTAL

The Winemakers Guest House

8221 Stoney Creek Road
530-620-3467
www.charlesbmitchell.com
2 rooms, 1 bathroom, kitchen(ette)*

Vineyard View Cottage

6375 Grizzly Flat Road
530-417-1789
www.vrbo.com/1112616
3 rooms, pet friendly, kitchen(ette)*,
2 bathrooms, washer/dryer, internet
access*

Toogood Winery Lodging

7280 Fairplay Road • 530-620-1910
www.toogoodwinery.com/Lodging/
3 rooms, swimming pool, hot tub/spa,
kitchen(ette)*, 3 bathrooms, internet
access*

Farmhouse Stay

2979 Mellowood Dr. • 530-599-0313
www.mellowoodvineyard.com/
Farmhouse-Stay
3 rooms, pet friendly, kitchen(ette)*,
fireplace*, 2 bathrooms, washer/dryer,
internet access*

Garden Valley

VACATION RENTAL

Bear Creek Lodge

4800 Bear Creek Road • 310-619-1487
www.vrbo.com/1568084
4 rooms, 2 bathrooms, pet friendly,
kitchen(ette)*, fireplace*, meeting
facilities, washer/dryer, internet access*

Georgetown

BED & BREAKFAST

American River Inn

6600 Orleans Street • 530-333-4499
www.americanriverinn.com
16 rooms, 35 person maximum capacity,
pet friendly, fireplace*, complimentary
breakfast, meeting facilities, internet
access*

CAMPGROUNDS

Chiquita Camp Campground

9092 Wentworth Springs Road
530-333-4673
www.campchiquita.com
pet friendly, boat ramp, picnicking,
restrooms, showers, RV hookup, H₂O

HOTELS & MOTELS

Rock Creek Inn

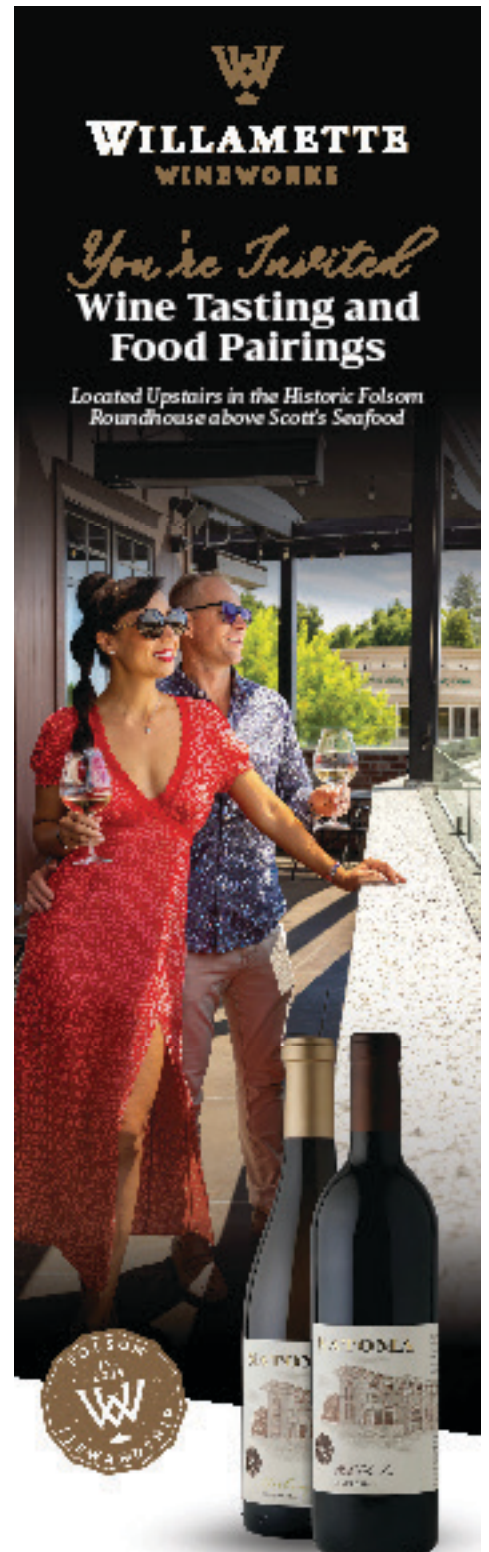
6220 CA-193 • 530-333-4359
www.rockcreekinn.info
6 rooms, pet friendly, kitchen(ette)*,
washer/dryer, internet access*

Grizzly Flat

CAMPGROUNDS

Leoni Meadows Campground

6100 Leoni Road • 530-626-3610
www.leonimeadows.org
picnicking, fishing, restrooms, showers,
RV hookup, cabins for rent, potable
H₂O, ADA accessible



WillametteWineworks.com

824 SUTTER ST. SUITE 200
FOLSOM, CA 95630
(916) 542-7417



Follow us @willamettewineworks

*Amenities available in room

BEST Pest Control

Voted #1 Sixteen Years Straight!
— by the Readers of the Mountain Democrat

Thank You!

"The staff at Koby Pest Control recognizes that keeping our customers number one is the key to our success year after year.

We always strive to provide the very best service possible for our loyal customers, exceeding their expectations with affordable solutions. We look forward to serving

our community for many years, thank you for that opportunity!"

Mike Kobus & Staff



Complete Pest & Weed Control Service

- Ants • Spiders • Fleas
- Wasps • Scorpions • Roaches
- Bees • Rats • Mice • Earwigs
- Black Widows



626-6774

Residential and Commercial
Serving All Of El Dorado County
Bonded • Licensed • Insured

LODGING DIRECTORY IN ELDORADO

Kit Carson

CAMPGROUNDS

Kit Carson Lodge

32161 Kit Carson Road • 209-258-8500
www.kitcarsonlodge.com
pet friendly, restrooms, cabins for rent,
potable H₂O, ADA accessible

Kyburz

HOTELS & MOTELS

Sierra Inn

13666 US-50 • 530-293-3382
www.hotelsone.com/kyburz-hotels-us/
sierra-inn-on-the-river.html
20 rooms, pet friendly, internet access*

Lotus

CAMPGROUNDS

Camp Lotus

5461 Bassi Road • 530-622-8672
www.camplotus.com
picnicking, fishing, restrooms, showers,
RV hookup, cabins for rent, potable
H₂O, ADA accessible

Ponderosa RV Resort

7291 CA-49 • 530-642-5830
www.thousandtrails.com
pet friendly, swimming pool, picnicking,
fishing, restrooms, showers, RV hookup,
cabins for rent, potable H₂O, ADA
accessible

Pilot Hill

VACATION RENTAL

Hart 2 Hart Vineyard House

5821 CA-49 • 530-885-9463
www.hart2hartvineyards.com
kitchen(ette)*, fireplace*, meeting
facilities, washer/dryer, internet access*

Placerville

BED & BREAKFAST

Bella Vista Bed & Breakfast

581 Cold Springs Road
530-622-3456
www.bellavistainc.net
5 rooms, 12 person maximum capacity,
pet friendly, swimming pool, hot
tub/spa, kitchen(ette)*, fireplace*,
complimentary breakfast, internet
access*

Davies Family Inn

3700 Fort Jim Road • 530-295-1000
www.thedaviesfamilyinn.com
4 rooms, kitchen(ette)*, fireplace*,
complimentary breakfast, meeting
facilities

Eden Vale Inn

1780 Springvale Road • 530-621-0901
www.edenvaleinn.com
7 rooms, 19 person maximum capacity,
pet friendly, hot tub/spa, kitchen(ette)*,
fireplace*, meeting facilities,
complimentary breakfast, internet
access*

Glen Morey Country House Bed & Breakfast

801 Morey Drive • 530-306-3481
www.placervillebedandbreakfast.com
5 rooms, 16 person maximum capacity,
pet friendly, complimentary breakfast,
meeting facilities, internet access*

Ponderosa Ridge B & B

2360 Union Ridge Road
530-344-9220
www.ponderosaridgebnb.com
3 rooms, 6 person maximum capacity,
pet friendly, hot tub/spa, complimentary
breakfast, internet access*

Seasons Bed & Breakfast

2934 Bedford Avenue • 530-626-4420
www.theseasons.net
4 rooms, 10 person maximum
capacity, pet friendly, kitchen(ette)*,
complimentary breakfast, internet
access*

The Villa Agave

1831 Red Fox Road • 415-696-2670
www.thevillaagave.com
3 rooms, 10 person maximum capacity,
hot tub/spa, complimentary breakfast,
meeting facilities, internet access*

CAMPGROUNDS

Camp Nauvoo

2200 Camp Nauvoo Road
916-207-9441
www.campnauvoo.com
pet friendly, fishing, restrooms, showers,
potable H₂O

Finnon Lake and Recreation Area

9100 Rock Creek Road • 530-409-5515
www.finnonrecreationarea.com
pet friendly, boat ramp, picnicking,
fishing, restrooms

HOTELS & MOTELS

Best Western Placerville Inn

6850 Green Leaf Drive • 530-622-9100
www.bwplacervilleinn.com
105 rooms, pet friendly, swimming pool,
hot tub/spa, fireplace*, complimentary
breakfast, meeting facilities, washer/
dryer, internet access*

*Amenities available in room

Gold Trail Motor Lodge

1970 Broadway • 530-622-2906
www.goldtrailmotorlodge.com
32 rooms, only 2 rooms pet friendly,
kitchen(ette)*, complimentary breakfast,
internet access*

Historic Cary House Hotel

300 Main Street • 530-622-4271
www.caryhouse.com
39 rooms, pet friendly, kitchen(ette)*,
meeting facilities, internet access*

Mother Lode Motel

1940 Broadway • 530-622-0895
21 rooms, pet friendly, swimming pool,
complimentary breakfast, internet
access*

National 9 Inn

1500 Broadway • 530-622-3884
www.national9inns.com/locations/
california/item/placerville-california
25 rooms, kitchen(ette)*, internet
access*

VACATION RENTAL

Miners Cottage

2 miles off HWY 50
https://www.airbnb.com/
rooms/20633580
1 room, 1 bathroom, pet friendly,
kitchen(ette)*, internet access*

River Room

3038 Orchard Lane • 805-324-2798
airbnb.com/rooms/55386667636565
2793? source_impression_id=p3_
1675717156_NXn2BqnwtijGABxx
1 room, pet friendly, kitchen(ette)*, 1
bathroom, internet access*

Ore Room

3038 Orchard Lane • 805-324-2799
www.airbnb.com/rooms/617993647
695664071?source_impression_
id=p3_1675717227_
3LgAaMOqULgdhhKC
1 room, pet friendly, kitchen(ette)*, 1
bathroom, internet access*

Casa Albizzi

3038 Orchard Lane • 805-324-2799
www.airbnb.com/rooms/747437772
852182309?source_impression_id=
p3_1675717429_2jMbFrWkDA
w9mxCO
1 room, pet friendly, kitchen(ette)*, 1
bathroom, internet access*

Yaki Room

3038 Orchard Lane • 805-324-2798
www.airbnb.com/rooms/553839661
433105860?source_impression_id=
p3_1676420238_TsZYf6ODfNJHi
J9m
1 room, pet friendly, kitchen(ette)*, 1
bathroom, internet access*

Pollock Pines

CAMPGROUNDS

Ice House Resort Campground

9199 Ice House Road • 530-293-3321
El Dorado Nat'l Forest
pet friendly, fishing, restrooms, RV
hookup, cabins for rent, potable H₂O

Sly Park Recreation Area

4771 Sly Park Road • 530-295-6824
www.eid.org/recreation
pet friendly, boat ramp, picnicking,
fishing, restrooms, hiking, camping &
more, potable H₂O, ADA accessible

HOTELS & MOTELS

Best Western Stagecoach Inn – Pollock Pines

5940 Pony Express Trail
530-644-2029
www.bestwestern.com/stagecoachinn
26 rooms, pet friendly, swimming pool,
kitchen(ette), fireplace*, complimentary
breakfast, internet access*

Westhaven Inn

5658 Pony Express Trail
530-644-7800
www.westhaveninn.com
21 rooms, internet access*

VACATION RENTAL

Moto Retreat

https://www.motoretreat.com/
3 room, 2 bathroom, pet friendly,
kitchen(ette)*, internet access*

Shingle Springs

CAMPGROUNDS

Placerville RV Resort & Campground

4655 Rock Barn Road • 530-676-2267
www.koa-placerville.com
pet friendly, swimming pool, picnicking,
fishing, restrooms, showers, RV hookup,
cabins for rent, potable H₂O, ADA
accessible

Somerset

BED & BREAKFAST

The Ranch at Stoney Creek

8320 Stoney Creek Road
530-401-4940
www.theranchatstoneycreek.com
5 rooms, 12 person maximum capacity,
hot tub/spa, kitchen(ette)*, fireplace*,
complimentary breakfast, meeting
facilities, internet access in saloon

VACATION RENTAL

Saluti Cellars

7505 Grizzly Flat Road
(530) 626 -0800
www.saluticellars.com
3 rooms, 3 bathrooms, kitchen(ette)*,
meeting facilities, internet access*

Somerset Ranch House

6040 Meyers Lane • (415) 279-6517
www.airbnb.com/rooms/53240388?
source_impression_id=p3_
1676320540_GmzdeiBpSNYR9lve
3 rooms, pet friendly, swimming pool,
kitchen(ette)*, 3 bathrooms, washer/
dryer, internet access*

South Lake Tahoe

SCAN QR CODE



For a complete listing of lodging in
South Lake Tahoe.

*Amenities available in room

The Country Wine Trail

Five of the wine
in family vineyards



Lodi Oaks Winery & Vineyard
2000 Redwood Road
Maricopa, CA
92541-4100
lodiwinery.com
Open Year-Round



Boeger Winery
7000 Canyon Road
Maricopa, CA
92541-0000
boegerwinery.com
Open Year-Round



Lodi Oaks Winery
2000 Redwood Road
Maricopa, CA
92541-4100
lodiwinery.com
Open Year-Round



Madonna Winery
2000 Redwood Road
Maricopa, CA
92541-4100
madonnawinery.com
Open Year-Round



Madonna Winery
2000 Redwood Road
Maricopa, CA
92541-4100
madonnawinery.com
Open Year-Round



Wolfbird Vineyards
2000 Redwood Road
Maricopa, CA
92541-4100
wolfbirdvineyards.com
Open Year-Round

~RAINBOW ORCHARDS~

Home of the **HOT** Apple Cider Donut



**Picnic and Play
on Hay-Bale-Hop and
Hole Lot of Donuts
under the apple trees!**

Fresh
**Apple Cider Mill
In Operation**



Fresh Cider

Our on-site Cider Mill presses fresh, unfiltered, all natural, delicious cider blended from the perfect combination of apples.

Housemade Hard Cider

Made from Rainbow Fresh Cider, Milled On-Site



Premium Wines

VISIT

**Rainbow Orchards
Certified Farmers' Market
Check rainboworchards.net
for markets served**

Rainbow Orchards Barn

2569 Larsen Drive • Camino, CA 95709
Open September – Mid-December

BAKESHOP

HOT Apple Cider Donuts
Apple Pie
Fresh Harvest Pumpkin Pie
Triple Crown Blackberry Pie
Apple Crisp
Apple Cream Cheese Tart
B & B (Blackberry-Blueberry Cobbler)
Peach Cobbler

*Thank You for
voting us
**BEST
Donuts**
and
**BEST
Apple Pie***



Mountain Democrat
Readers' Choice



Just Picked

*Fresh picked produce from
our trees to your home!
Check ahead for what's ripe!*

Gala, Red Delicious & Golden Delicious, Granny Smith Apples, Pippin, Fuji, Pink Lady, Braeburn, Rome, Winesap and Arkansas Black Apples. Honey Crisp Apples, Cameo Apples. Heirloom, Squash and Pumpkins. Blueberries and Blackberries

**You Pick Blueberries
Rainbow Camino Ridge**

3010 Snows Road

(Snows Rd @ Fuji Court)

Weekends Mid-June thru Mid-July
RESERVATIONS REQUIRED
AND CAN BE MADE AT
RAINBOW ORCHARDS
FACEBOOK

OR
rainboworch@
gmail.com.



LOCATIONS

Rainbow Camino Ridge Blueberry Patch

Snows Rd. at Fuji Court (next to Camino School), Camino 95709
Open Mid-June – Mid-July

For Up-To-Date Hours of Operation:

- Call 530.644.1594
- Visit facebook/rainboworchards
- Visit rainboworchards.net





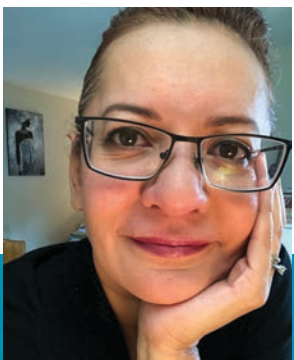
FOLSOM LAKE COLLEGE

Viticulture & Enology

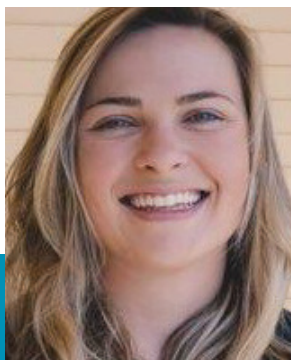


Folsom Lake College Viticulture & Enology Program highlights

- Variety of classes on growing, producing, and tasting wine
- Good for anyone interested in grape growing or wine production
- Expert faculty with industry experience
- Regionally focused on Sierra Foothills region
- On ground and online formats
- Degree and certificates available
- Courses taught summer, fall, and spring semesters
- 8 and 16-week courses



Cecilia Osorio
Instructor



Clare Kessler
Instructor



For more information
on how to apply
and register. go to
www.flc.losrios.edu